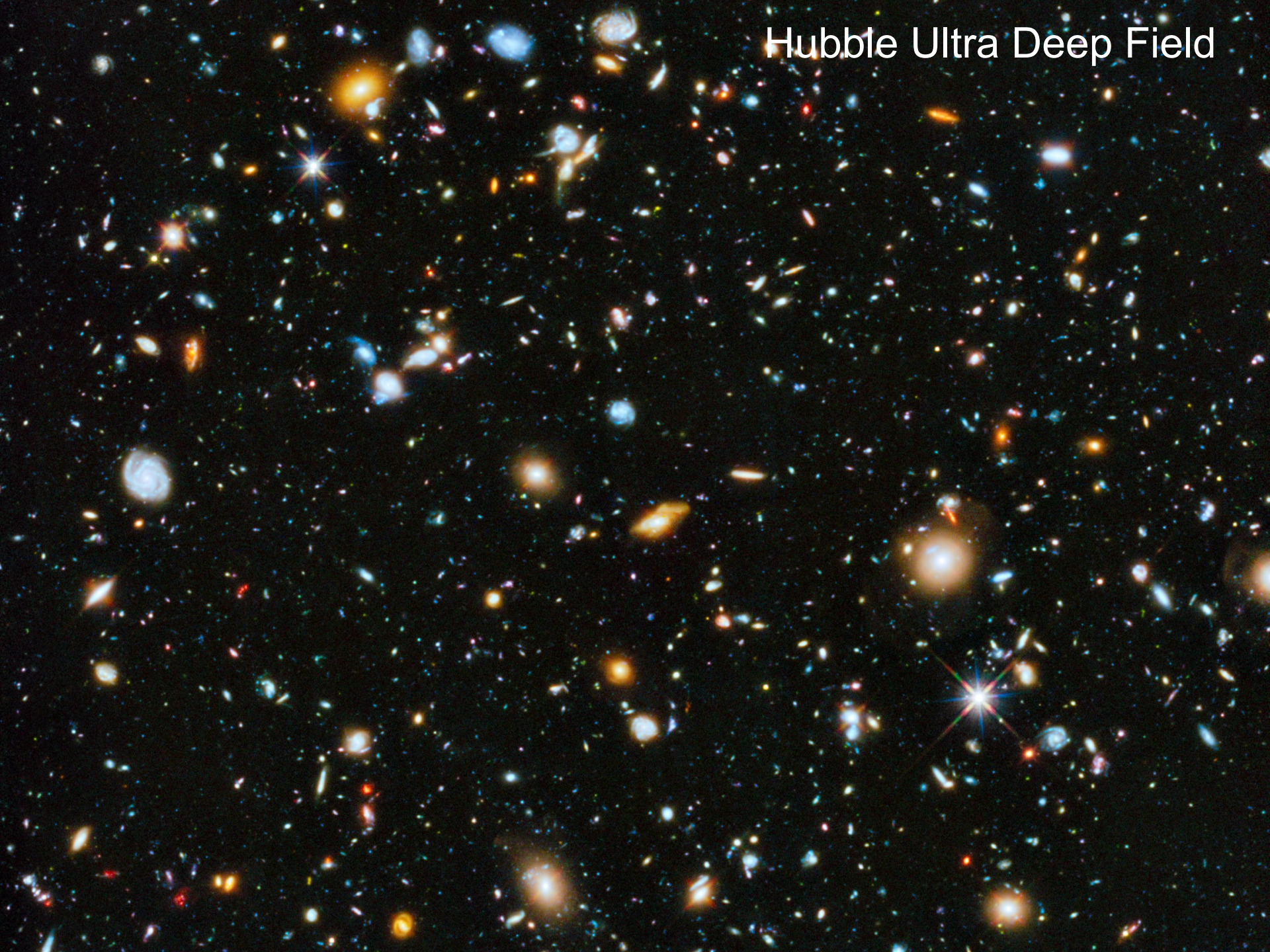


Hubble Ultra Deep Field



Velocity-Distance Relation among Extra-Galactic Nebulae.

Hubble 1929

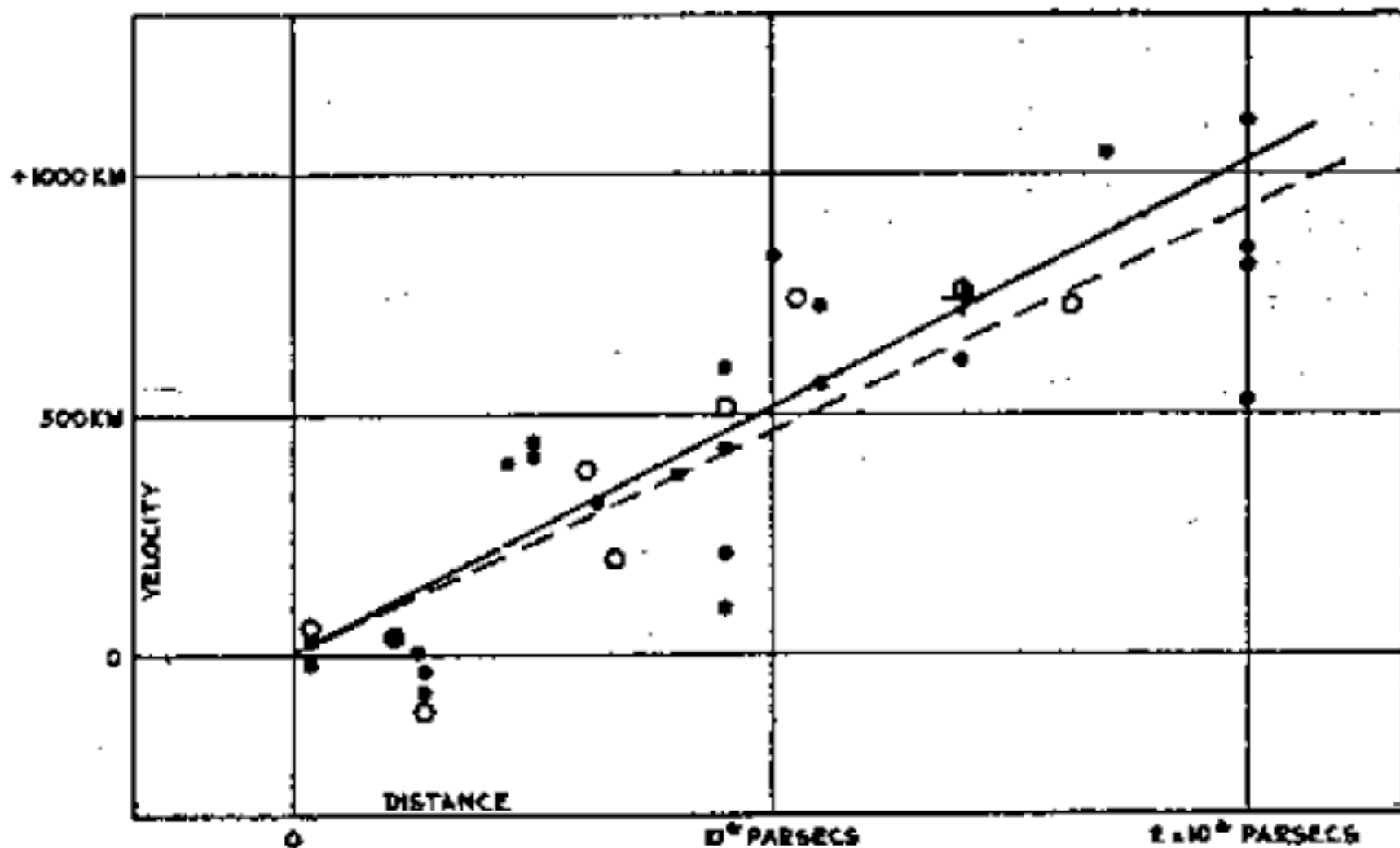
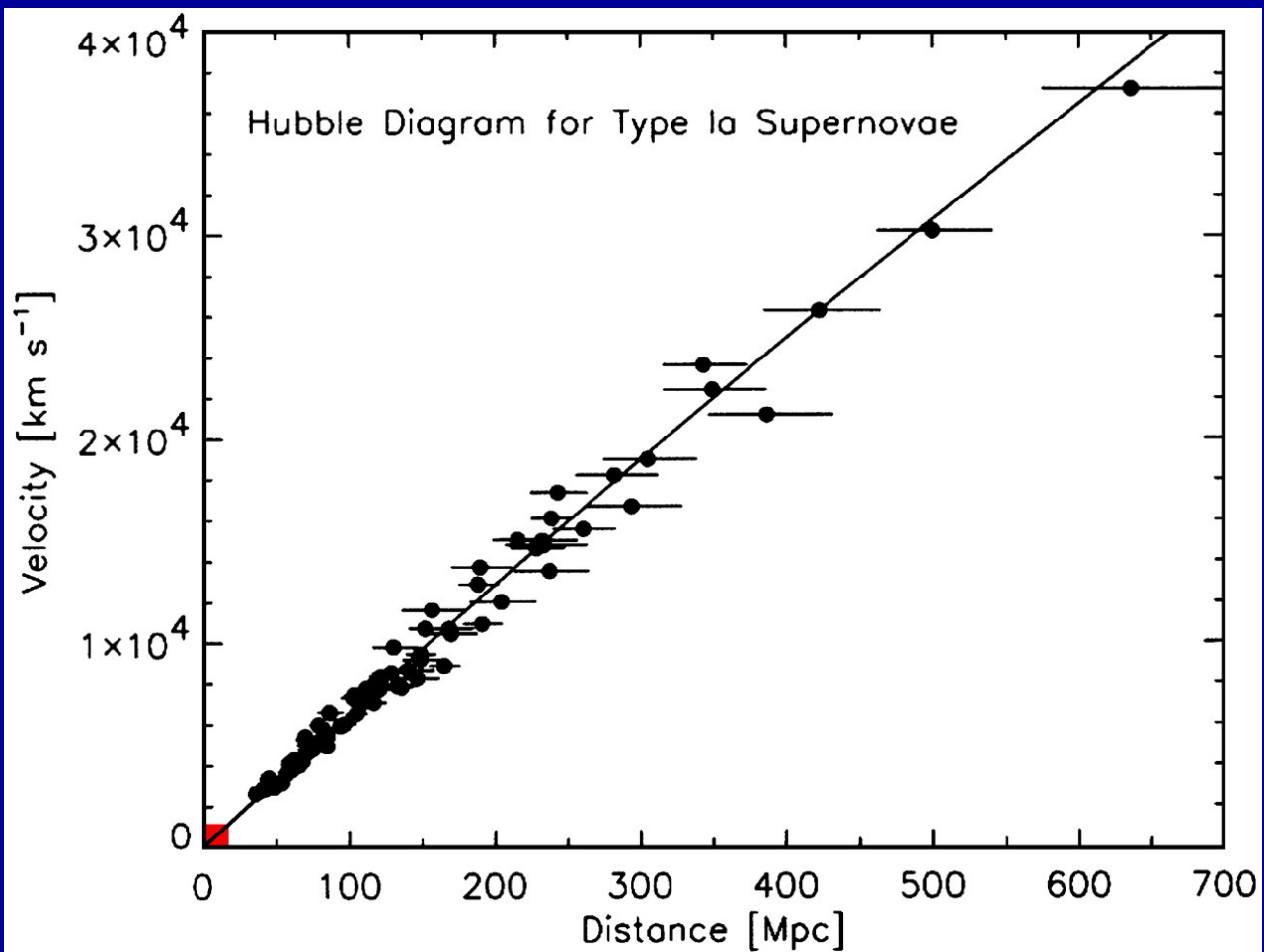
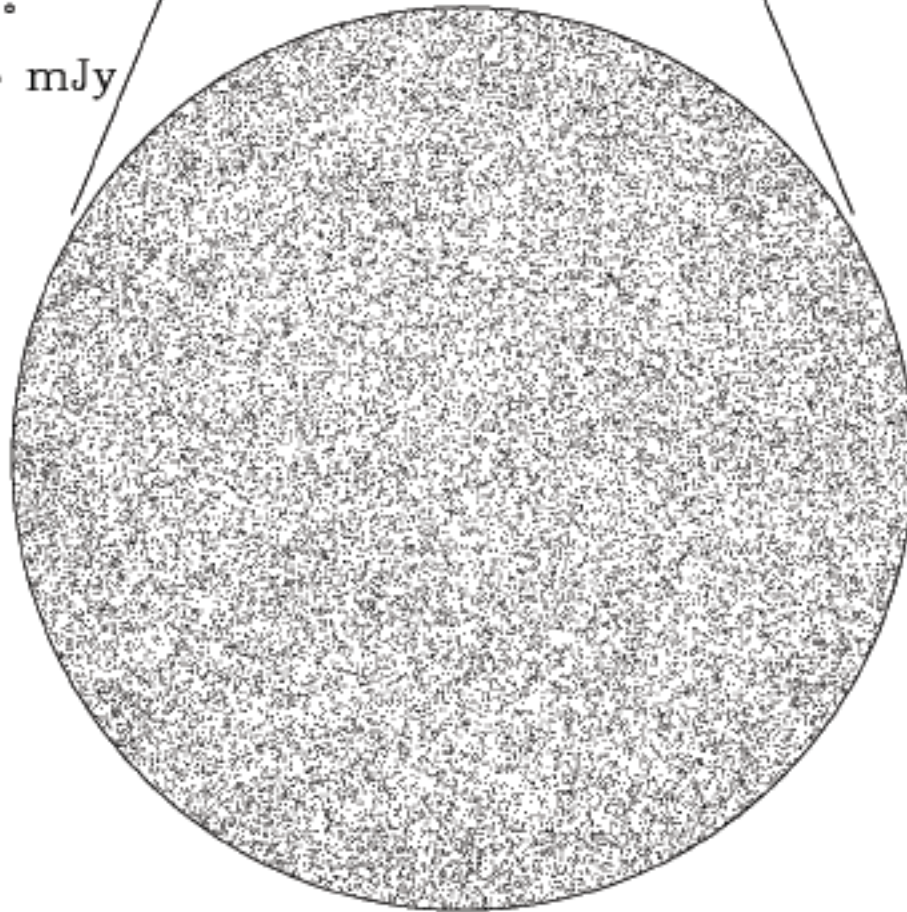


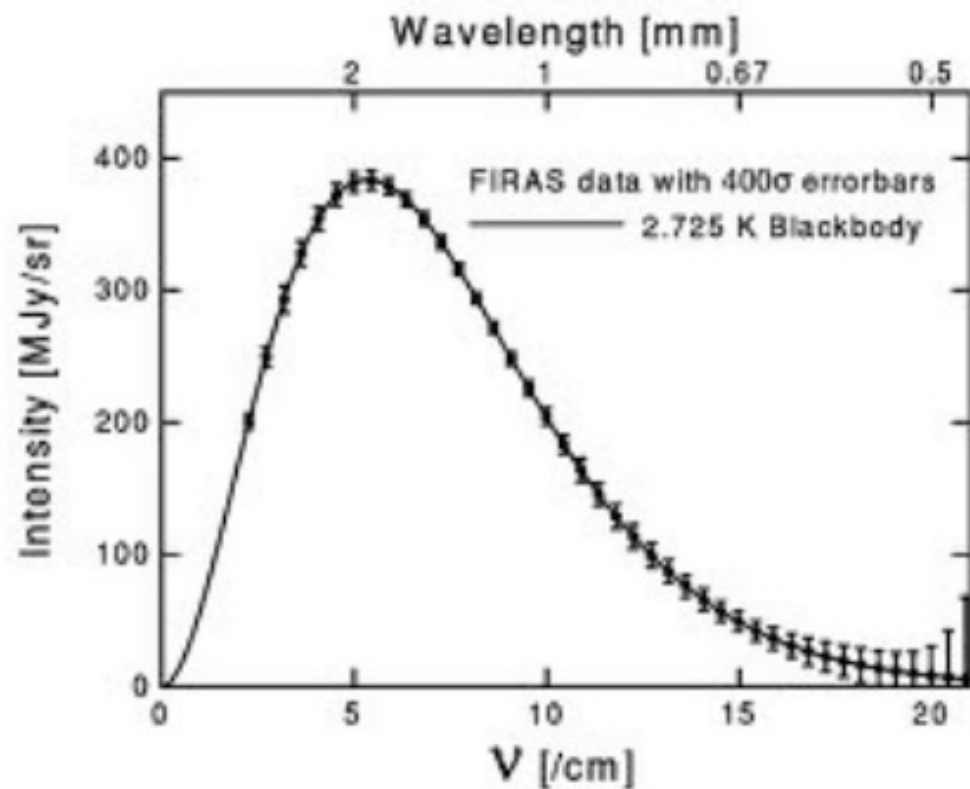
FIGURE 1



$\delta > +75^\circ$
 $S > 2.5 \text{ mJy}$



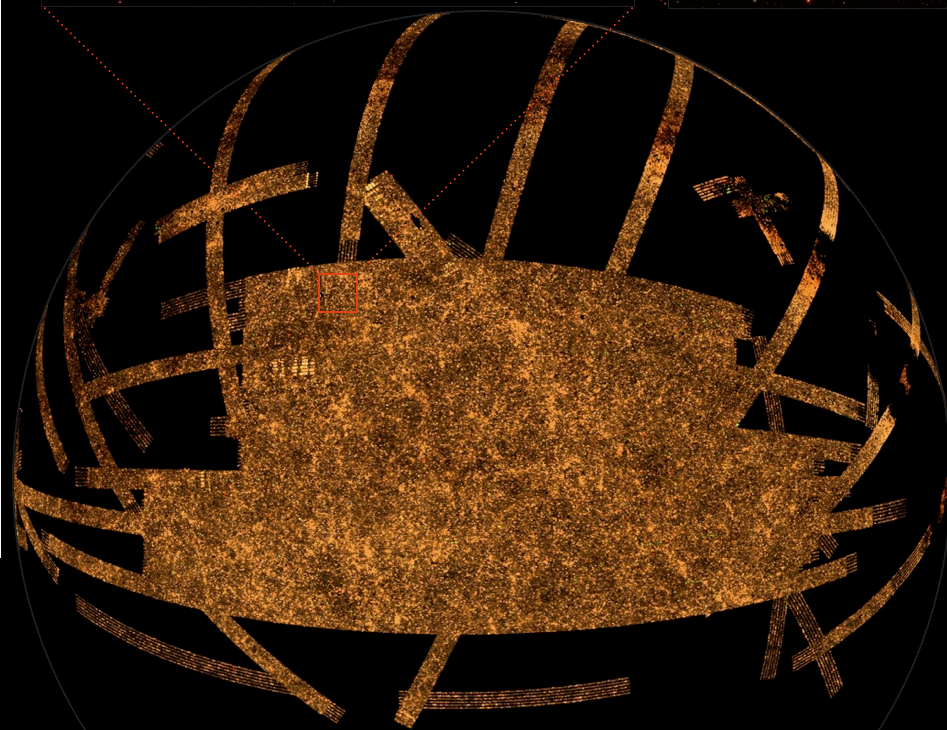
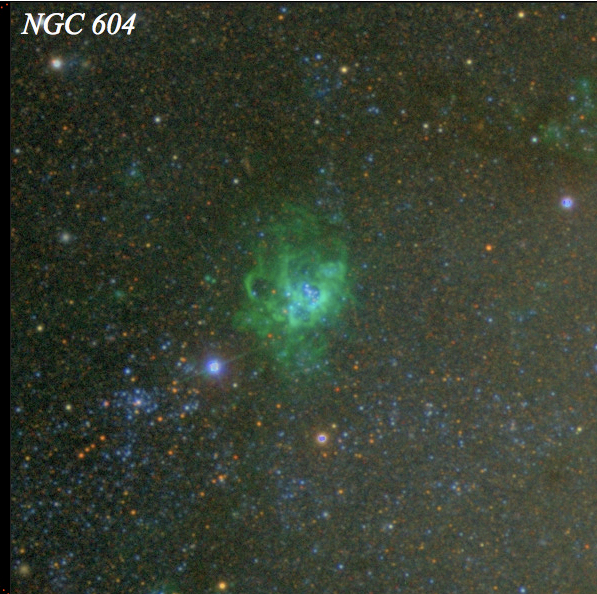
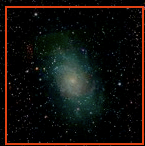
Radio sources near north celestial
pole, Condon et al.



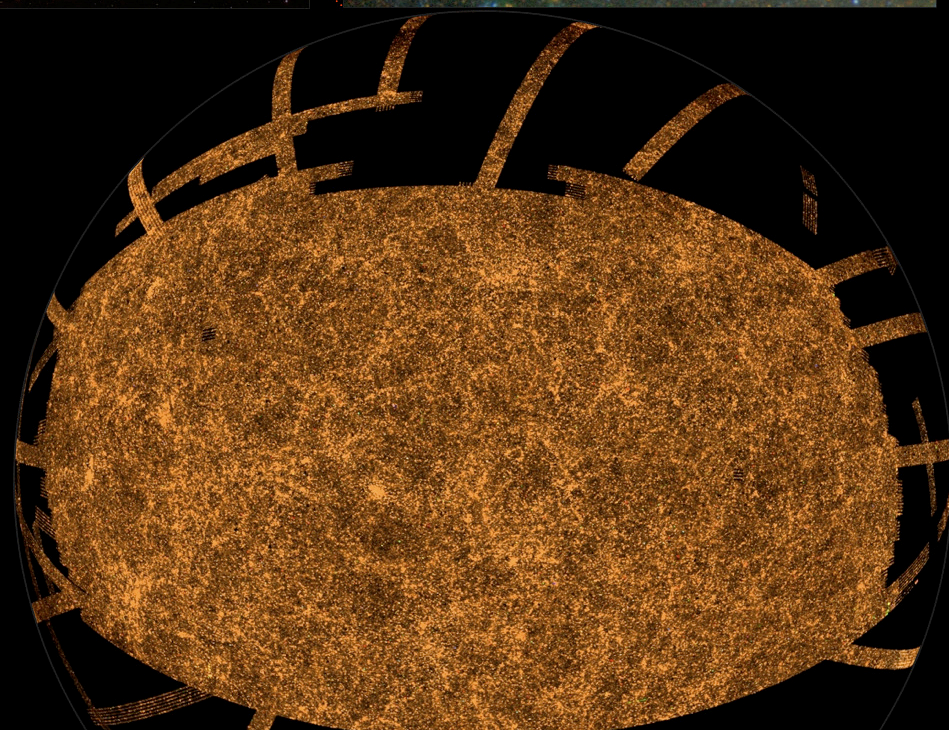
Blackbody spectrum of CMB,
measured by COBE (1990)

Messier 33

NGC 604

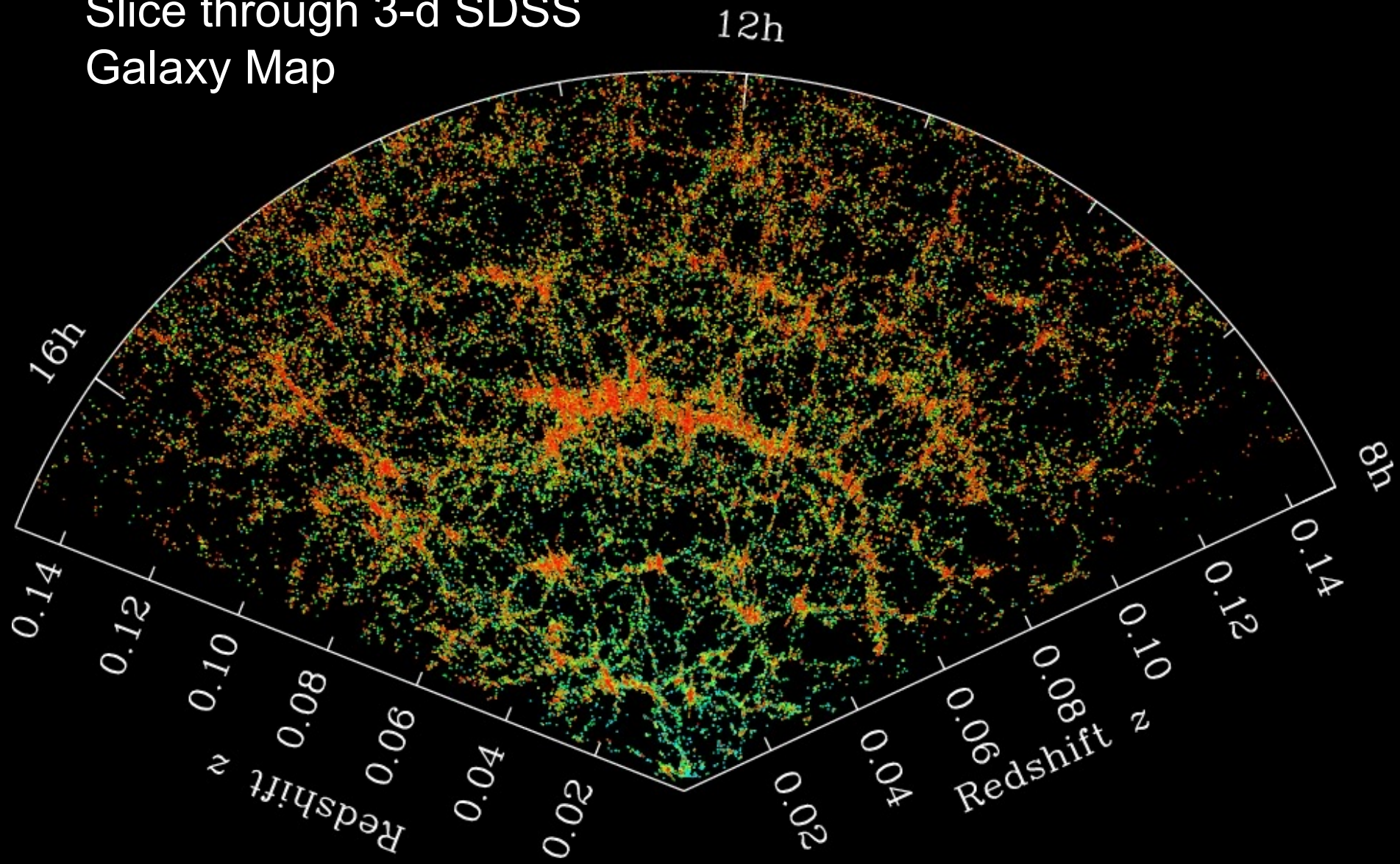


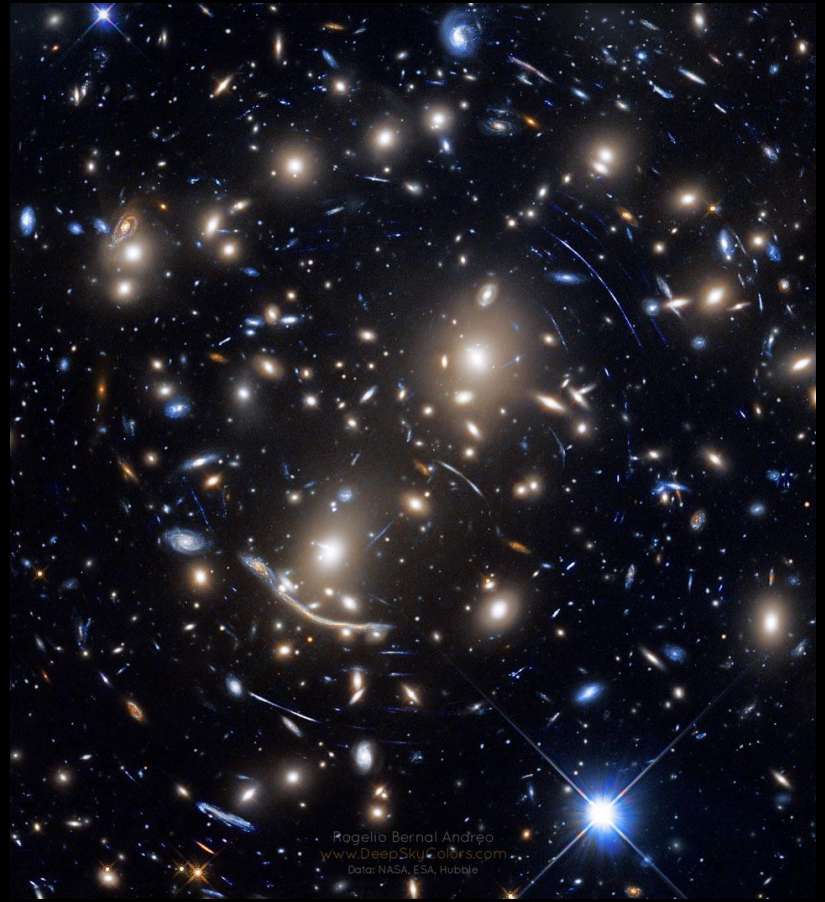
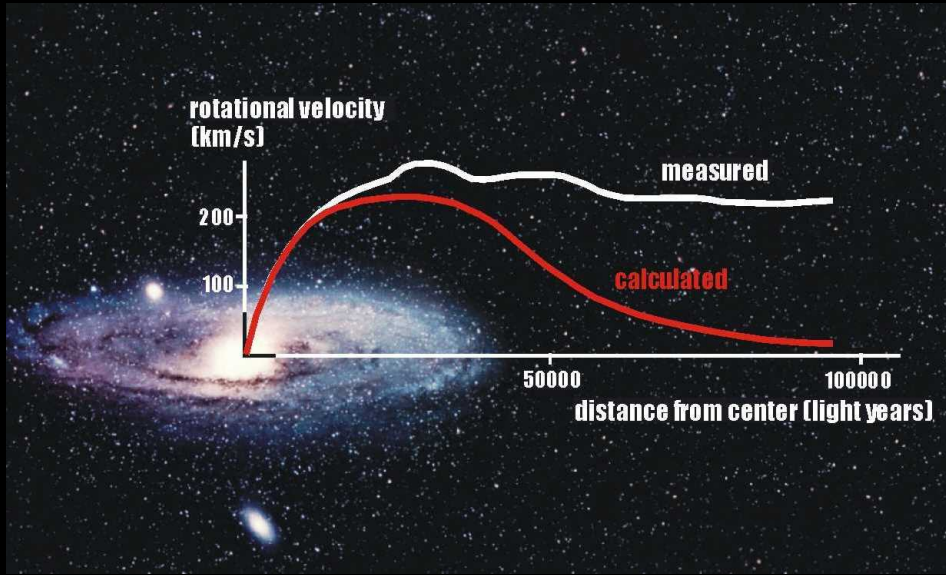
Southern Galactic Cap



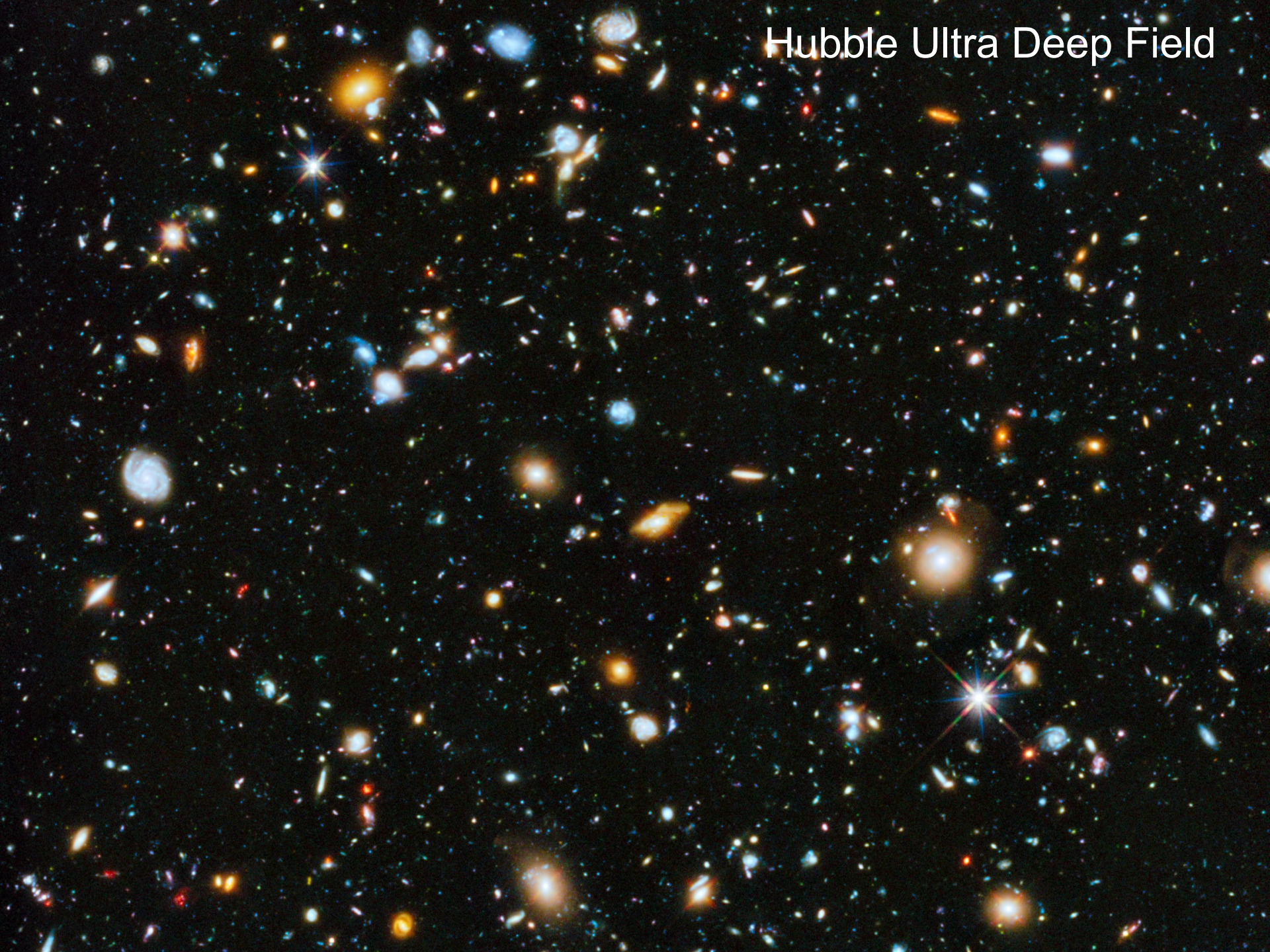
Northern Galactic Cap

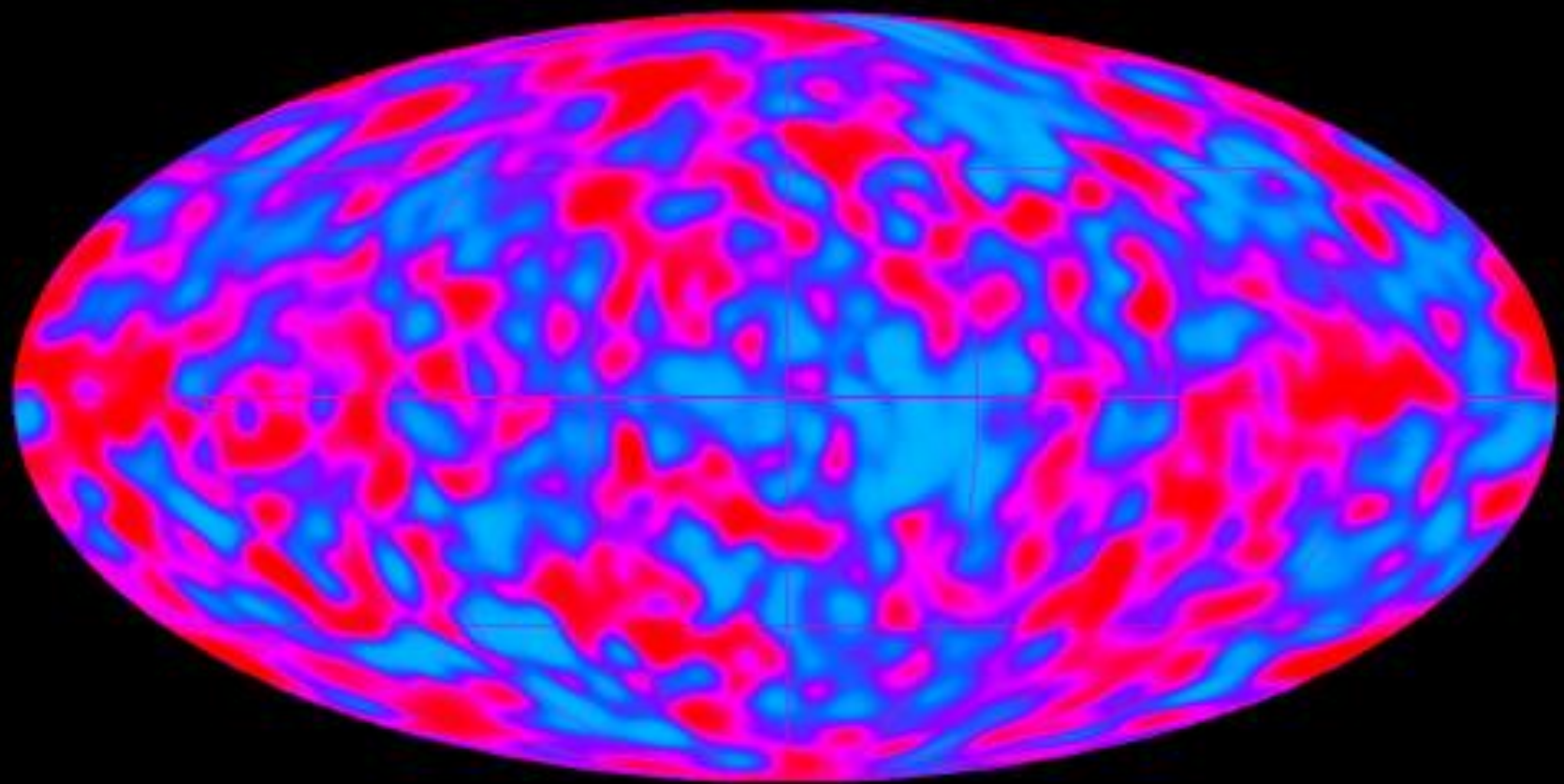
Slice through 3-d SDSS Galaxy Map

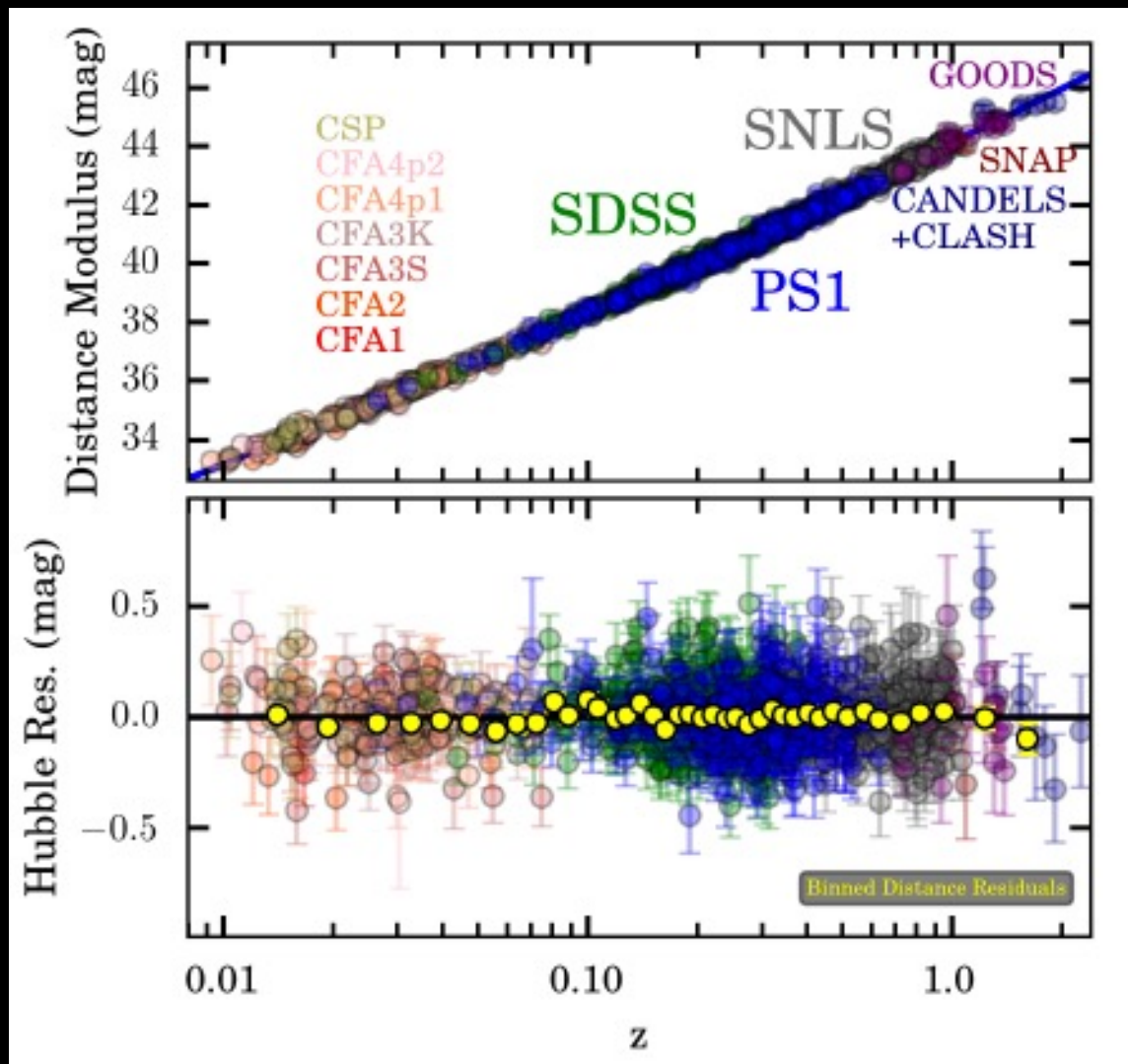




Hubble Ultra Deep Field

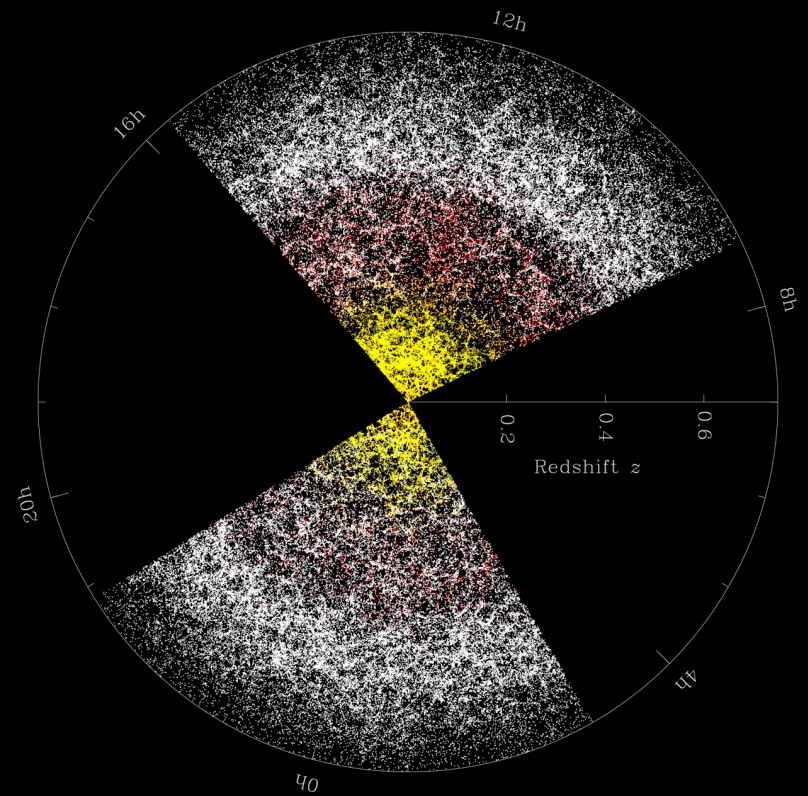
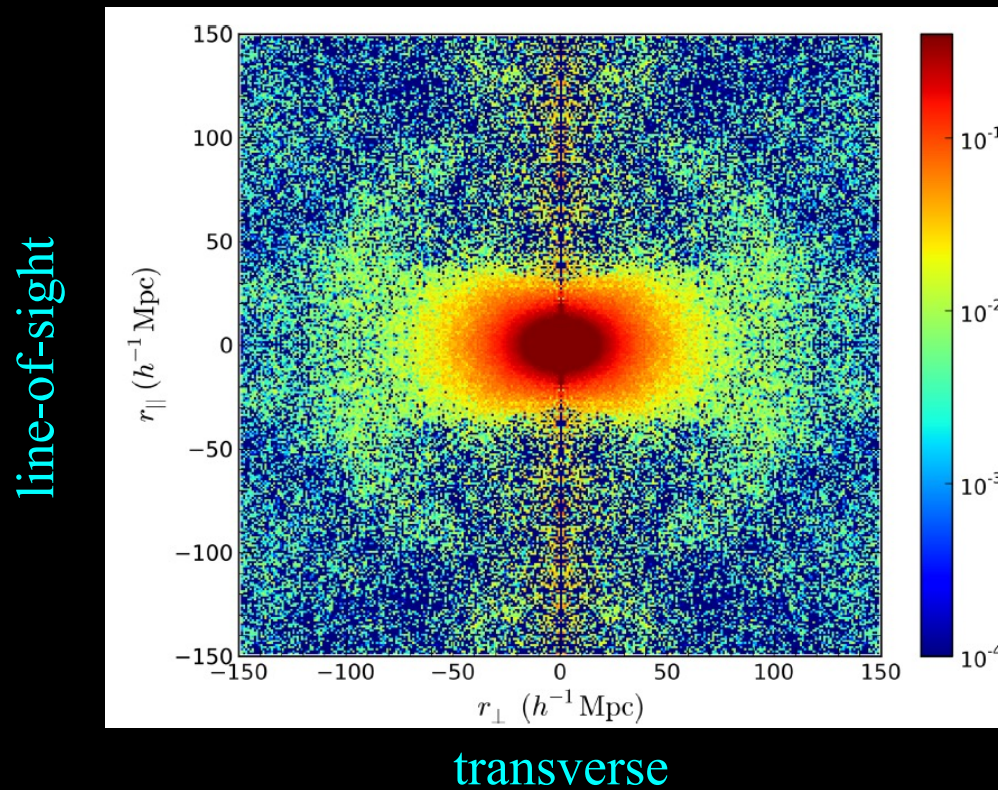






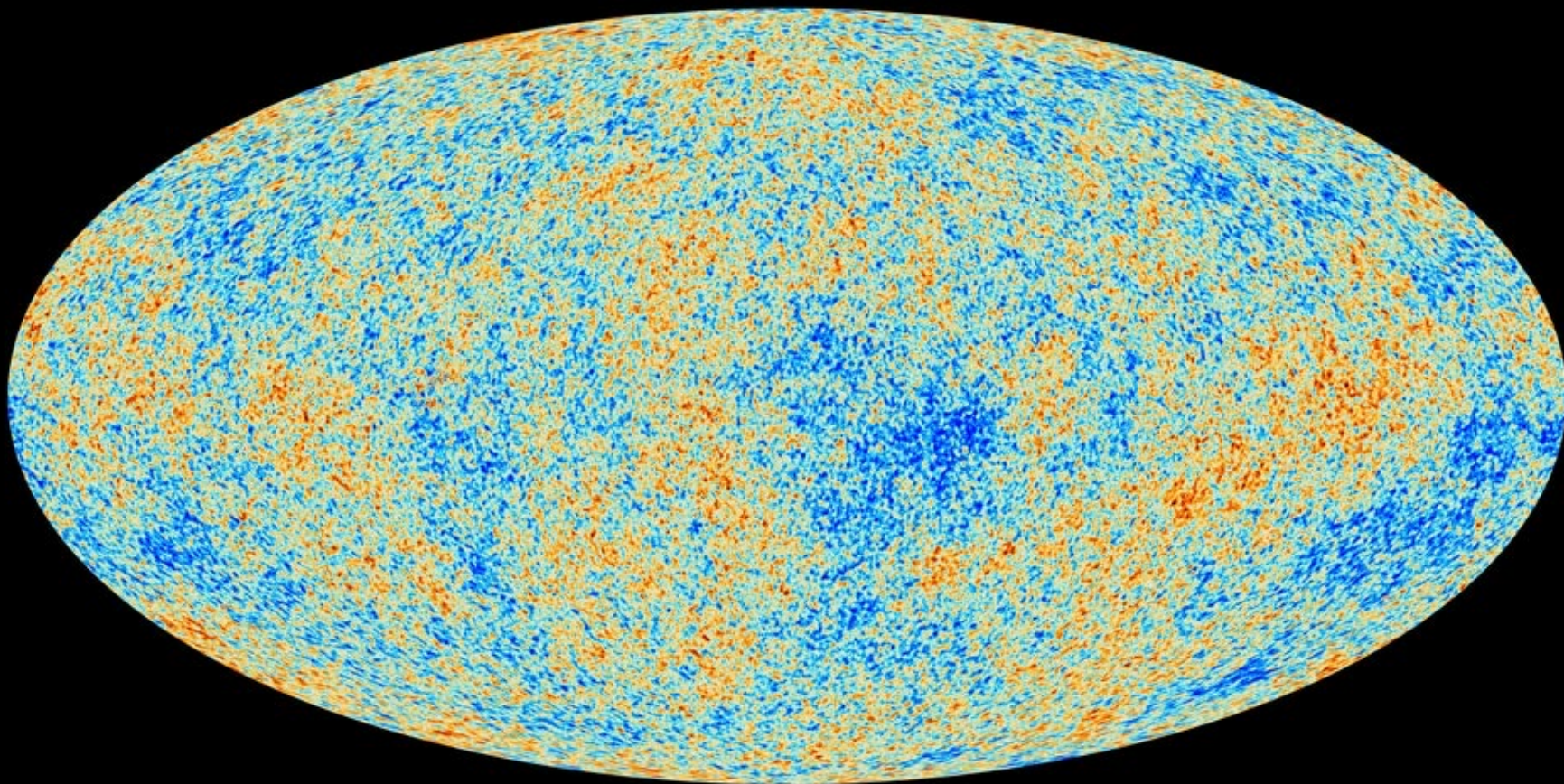
Scolnic et al. 2017

2-d galaxy correlation function: Redshift-space distortion and the BAO ring.



Samushia, Reid, White et al. 2014

Planck CMB map



Planck CMB Power Spectrum + Λ CDM model fit

