

# THE ORIGIN OF DUST IN EARLY-TYPE GALAXIES AND IMPLICATIONS FOR ACCRETION ONTO SUPERMASSIVE BLACK HOLES

PAUL MARTINI<sup>1</sup>

Department of Astronomy Department and Center for Cosmology and Astroparticle Physics, The Ohio State University, Columbus, OH 43210

DANIEL DICKEN

Institut de Astrophysique Spatiale, Paris, France

AND

THAISA STORCHI-BERGMANN

Instituto de Física, Universidade Federal do Rio Grande do Sul, Av. Bento Gonçalves 9500, Caixa Postal 15051, 91501-970 Porto Alegre, RS Brasil

*ApJ Accepted [16 February 2013]*

## ABSTRACT

We have conducted an archival *Spitzer* study of 38 early-type galaxies in order to determine the origin of the dust in approximately half of this population. Our sample galaxies generally have good wavelength coverage from  $3.6\mu\text{m}$  to  $160\mu\text{m}$ , as well as visible-wavelength *HST* images. We use the *Spitzer* data to estimate dust masses, or establish upper limits, and find that all of the early-type galaxies with dust lanes in the *HST* data are detected in all of the *Spitzer* bands and have dust masses of  $\sim 10^{5-6.5}M_{\odot}$ , while galaxies without dust lanes are not detected at  $70\mu\text{m}$  and  $160\mu\text{m}$  and typically have  $< 10^5M_{\odot}$  of dust. The apparently dust-free galaxies do have  $24\mu\text{m}$  emission that scales with the shorter wavelength flux, yet substantially exceeds the expectations of photospheric emission by approximately a factor of three. We conclude this emission is dominated by hot, circumstellar dust around evolved stars that does not survive to form a substantial interstellar component. The order of magnitude variations in dust masses between galaxies with similar stellar populations rules out a substantial contribution from continual, internal production in spite of the clear evidence for circumstellar dust. We demonstrate that the interstellar dust is not due to purely external accretion, unless the product of the merger rate of dusty satellites and the dust lifetime is at least an order of magnitude higher than expected. We propose that dust in early-type galaxies is seeded by external accretion, yet the accreted dust is maintained by continued growth in externally-accreted cold gas beyond the nominal lifetime of individual grains. The several Gyr depletion time of the cold gas is long enough to reconcile the fraction of dusty early-type galaxies with the merger rate of gas-rich satellites. As the majority of dusty early-type galaxies are also low-luminosity Active Galactic Nuclei and likely fueled by this cold gas, their lifetime should similarly be several Gyr.

*Subject headings:* dust – galaxies: general – galaxies: ISM – infrared: galaxies – ISM: general

## 1. INTRODUCTION

One of the most striking characteristics of elliptical and lenticular galaxies is their apparent uniformity. Much more than their later-type cousins, early-type galaxies appear to have quite smooth and symmetric surface brightness profiles. Their morphological self-similarity is largely because most early-type galaxies, and in particular ellipticals, are expected to be the result of nearly equal-mass mergers that have produced symmetric stellar distributions via dynamical relaxation. This assembly process, combined with the generally large halos that host early-type galaxies, has also substantially heated the gas in their interstellar medium (ISM) such that cooling and subsequent star formation are quite inefficient. As a result, their stellar populations tend to be mostly old and well-mixed, which reinforces their similar and smooth appearance.

Against the backdrop of these similarities, and the simplicity of this general picture, the differences between nominally similar early-type galaxies are cast into sharper relief than for the more highly structured late-type disk galaxy population. One striking difference is that some, but not all, early-type

galaxies clearly contain cold, interstellar dust. This was revealed in IRAS observations that detected a number of elliptical galaxies at  $100\mu\text{m}$  (Jura et al. 1987; Knapp et al. 1989; Goudfrooij & de Jong 1995; Bregman et al. 1998). A study by Knapp et al. (1992) also demonstrated that ellipticals had emission at  $10-12\mu\text{m}$  in excess of what was expected from stellar photospheres alone. This excess could be explained by circumstellar dust emission from evolved stars and proved to be a strong observational confirmation of expectations for mass loss from old stellar populations.

The presence of dust in early-type galaxies is interesting because it may provide additional information about their formation histories, the properties of dust when embedded within a substantially greater fraction of hot gas than is present in typical spirals, and the evolution of the interstellar medium, in addition to stellar mass loss from evolved stars. Yet the presence of dust is also in apparent conflict with the expectation that the dust destruction timescale should be relatively short ( $\tau_{\text{dust}} \sim 2 \times 10^4$  yr), largely due to sputtering of small grains in their hot ISM (Draine & Salpeter 1979b).

Observations with *HST* revealed that dust lanes were common and probably present in the majority of early-type galaxies. These observations showed dust lanes in absorption within 100s of parsecs to a kpc of the nucleus (van Dokkum

<sup>1</sup> Visiting Astronomer, North American ALMA Science Center and University of Virginia, Charlottesville, VA

& Franx 1995). This study also noted that the incidence of dust is higher in radio galaxies than in radio-quiet galaxies, estimated that the mass of dust ranged from  $10^{3-7} M_{\odot}$ , and that the distribution of the dust lanes suggests external accretion. Subsequent studies of atomic (Morganti et al. 2006) and molecular gas kinematics (Young et al. 2011; Davis et al. 2011) supported external accretion because the gas kinematics are often decoupled from the stellar kinematics.

While there is good, anecdotal evidence for external accretion, the evolved stars in early-type galaxies are also a potential source for the dust (Knapp et al. 1992). Athey et al. (2002) showed that the mid-infrared emission from early-type galaxies is consistent with stellar mass loss of on order  $0.1-1 M_{\odot} \text{ yr}^{-1}$  for a typical  $L^*$  galaxy. For a dust-to-gas ratio of  $\epsilon_{dg} = 0.005$  and a dust lifetime of  $10^{7-8}$  yr characteristic of the Milky Way, this would lead to a typical reservoir of  $5 \times 10^{3-5} M_{\odot}$  (or  $10-100 M_{\odot}$  for  $\tau_{dust} = 2 \times 10^4$  yr). While this dust would initially match the spatial and kinematic distribution of the evolved stellar population, Mathews & Brighenti (2003) suggest that cooling in dust-rich gas could lead to clumping and settling into the central kiloparsec on a timescale of  $10^{8-9}$  yr. While this substantially exceeds the expected lifetime of individual dust grains, the clumpiness may sufficiently shield the dust to produce a steady state dust mass that is consistent with the observations. However, the internal origin hypothesis does not explain the dramatic variation in dust mass between otherwise quite similar galaxies. Temi et al. (2004) showed that there is no correlation between the far-infrared luminosity of early-type galaxies and their visible-wavelength luminosities, even though visible-wavelength light should correlate reasonably well with the number of mass-losing stars. This absence of a correlation can be more readily explained by the external accretion hypothesis.

Another important aspect of these studies was the observation that the majority of the early-type galaxies with dust also have emission-line nuclei that often indicate the presence of a LINER or Seyfert galaxy (van Dokkum & Franx 1995; Ravindranath et al. 2001; Lauer et al. 2005). In order to investigate this correlation with a well-selected sample of early-type galaxies, in Simões Lopes et al. (2007) we studied archival *HST* images of a carefully-matched sample of active and inactive early-type hosts and determined that all active early-type galaxies also have dust within 100s of parsecs of their nuclei, while only  $\sim 25\%$  of inactive galaxies had evidence for dust. This study showed that  $\sim 60\%$  of the early-type galaxy population has interstellar dust. As we noted in Simões Lopes et al. (2007), the high incidence of dust in early-type galaxies presents a key challenge to the external origin hypothesis, namely that  $\sim 60\%$  of the early-type galaxy population must have accreted a gas and dust-rich dwarf within a time period comparable to the dust destruction time. For a dust destruction timescale of  $10^{7-8}$  yr, this implies a very high rate of gas-rich mergers.

A missing ingredient in the Simões Lopes et al. (2007) study is that there was no constraint on the dust mass distribution in the early-type galaxies, which would provide a useful constraint on the mass range and consequently mass ratio of the satellite galaxies required to provide the observed mass of dust. Simões Lopes et al. (2007) also employed the structure map technique of Pogge & Martini (2002) to identify dust lanes. As this is a contrast enhancement technique, it is insensitive to uniform or diffusely distributed dust. Uniformly-distributed dust in the galaxies without dust lanes in the cen-

tral kpc would provide strong support for the internal origin hypothesis.

Over the last few years, several studies with *Spitzer* and *Herschel* have assembled far-infrared measurements and estimated dust masses and basic dust properties for many early-type galaxies. One result of this work is that the dust in early-type galaxies is warmer than in spiral galaxies (Bendo et al. 2013; Skibba et al. 2011; Smith et al. 2012; Auld et al. 2013), which may be due to more intense radiation fields or different dust grain properties. The *Herschel* KINGFISH survey showed that early-type galaxies exhibit a strong correlation between the dust to stellar flux ratio and the specific star formation rate, which could be due to low levels of on-going star formation (Skibba et al. 2011). The *Herschel* Reference Survey (Smith et al. 2012) and the *Herschel* Virgo Cluster Survey (Auld et al. 2013) detect many early-type galaxies and measure dust masses in the range of  $\sim 10^{5-7} M_{\odot}$ . The Smith et al. (2012) study concluded that much of this dust was acquired from interactions due to the wide range in dust to stellar mass ratio. A similar conclusion was reached by Rowlands et al. (2012), who detected 5.5% of luminous ETGs in the *Herschel*-ATLAS/GAMA study. While only sensitive to quite high dust masses (their mean detected dust mass was  $5.5 \times 10^7 M_{\odot}$ ), they conclude that these high dust masses could not be produced internally.

In this paper we present a *Spitzer* archival study of the origin of the dust in early-type galaxies. Our sample is composed of galaxies in the Simões Lopes et al. (2007) early-type galaxy sample that have both IRAC and MIPS observations. We describe this sample in §2 and our data processing and photometry in §3. All of the galaxies in this sample are detected in the IRAC bands, which are dominated by stellar emission, as well as in the  $24\mu\text{m}$  MIPS band. Many are also detected in the longer wavelength MIPS bands. The  $24\mu\text{m}$  emission from galaxies not detected at longer wavelengths appears to be dominated by circumstellar dust. We describe how we account for this emission in §4. To derive the dust masses and properties of the dust, we fit these galaxies with the dust models of Draine & Li (2007). These fits and the derived properties are described in §5. We use these data to develop a new hypothesis for the origin of the dust in early-type galaxies in §6 and summarize our results in §7.

## 2. SAMPLE

Our sample is composed of 38 bright, nearby, early-type galaxies (types E, E/S0, and S0). They constitute all of the early-type galaxies from the *HST* study of Simões Lopes et al. (2007) that have observations in at least two MIPS bands. The goal of the Simões Lopes et al. (2007) study was to compare dust structure in the central 100s of parsecs between active and inactive galaxies and that sample contained equal numbers of well-matched active and inactive galaxies from the Palomar survey of Ho et al. (1995). The Palomar survey is very well suited for this purpose because it consists of very high signal-to-noise ratio (SNR) spectroscopy of all bright galaxies in a fixed region of the sky. Furthermore, all of the nuclear spectra have been classified as either absorption-line nuclei, HII galaxies, LINERs, transition objects, or Seyfert galaxies (Ho et al. 1997b). The Palomar survey sample is thus both unbiased with respect to nuclear activity and has homogeneous and sensitive nuclear classifications. A further advantage is that there are a large number of ancillary data products, which are described in Ho (2008).

The Simões Lopes et al. (2007) study began with all of

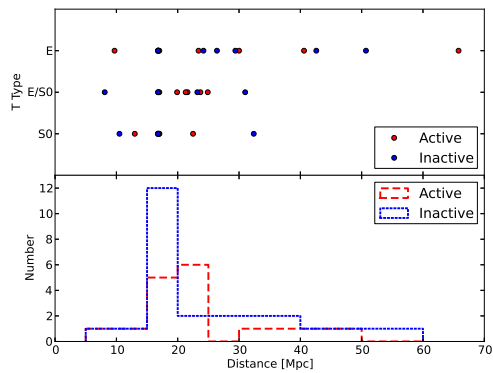


FIG. 1.— Sample distribution as a function of morphological type, activity, and distance. (*Top panel*) Active and inactive galaxies (red and blue circles, respectively) as a function of morphological type and distance. (*Bottom panel*) Histogram of all morphological types of the active and inactive galaxies (red and blue lines, respectively) as a function of distance. The substantial overdensity at 16.8 Mpc is because many galaxies in that bin are members of the Virgo cluster.

the LINERs and Seyfert galaxies (hereafter simply active galaxies) in the Palomar sample with *HST* observations and, for each active galaxy, identified a control (inactive) galaxy with the same morphology, distance, luminosity, and axis ratio. They identified 26 early-type pairs with relatively strict matching criteria (morphological  $T$  type within 1 unit, absolute  $B$  magnitude within 1 mag, distance within 50%) and eight additional pairs of early-type galaxies that were not as well matched. These 34 pairs of active and inactive early-type galaxies had very similar distributions of distances, luminosities, and morphological types and are consequently very well suited to compare the differences between active and inactive early-type galaxies. As noted in the Introduction, that *HST* study found that all active, early-type galaxies possess some form of dust structure within several 100 pc of their nuclei, whereas only 26% (nine) of the inactive galaxies exhibited evidence for such dust. These data thus show there is a strong dichotomy between dusty and active early-type galaxies and typically dust-free and inactive early-type inactive galaxies. Furthermore, as Ho et al. (1997b) found that 50% of all early-type galaxies are classified as LINERs or Seyferts (active), this result also indicates that about 60% of all early-type galaxies have dust.

We constructed our sample from all of the early-type galaxies in the Simões Lopes et al. (2007) study that have observations in at least two MIPS bands, and in most cases all three are available. All of the galaxies also have IRAC observations, in addition to the *HST* observations. This sample has approximately equal numbers of active and inactive galaxies and should be an unbiased subset of the Simões Lopes et al. (2007) sample because these galaxies were targeted for MIPS observations by a multitude of small programs. Because of this selection, and a desire to not decrease the sample size further, we did not attempt to create a pair-matched sample from this subset. We did confirm that there are not obvious trends between the active and inactive subsets as a function of distance and morphological type. Figure 1 shows the distance distribution for galaxies classified as type E, E/S0, and S0. While the true ellipticals extend out to larger distances than the two other types, the distribution of active and inactive galaxies are similar. The morphological classification, activity type, and distance for all of the galaxies are presented in

TABLE 1  
SAMPLE PROPERTIES

Name (1)	Morph (2)	Activity (3)	Distance (4)	HST Dust? (5)
NGC0315	E	active	65.8	Y
NGC0821	E/S0	inactive	23.2	N
NGC1023	S0	inactive	10.5	N
NGC2300	E/S0	inactive	31.0	N
NGC2768	E/S0	active	23.7	Y
NGC2787	S0	active	13.0	Y
NGC3226	E	active	23.4	Y
NGC3377	E/S0	inactive	8.1	Y
NGC3414	S0	active	24.9	Y
NGC3607	S0	active	19.9	Y
NGC3640	E	inactive	24.2	N
NGC3945	S0	active	22.5	Y
NGC3998	S0	active	21.6	Y
NGC4026	S0	inactive	17.0	Y
NGC4138	S0	active	17.0	Y
NGC4278	E	active	9.7	Y
NGC4291	E	inactive	29.4	N
NGC4293	S0a	active	17.0	Y
NGC4365	E	inactive	16.8	N
NGC4371	S0	inactive	16.8	Y
NGC4382	S0	inactive	16.8	N
NGC4406	E	inactive	16.8	N
NGC4526	S0a	inactive	16.8	Y
NGC4550	S0	active	16.8	Y
NGC4570	S0	inactive	16.8	N
NGC4578	S0	inactive	16.8	N
NGC4589	E	active	30.0	Y
NGC4612	S0	inactive	16.8	N
NGC4621	E	inactive	16.8	N
NGC4636	E	active	17.0	Y
NGC4649	E	inactive	16.8	N
NGC4694	E	inactive	16.8	Y
NGC5077	E	active	40.6	Y
NGC5273	S0	active	21.3	Y
NGC5308	S0	inactive	32.4	N
NGC5557	E	inactive	42.6	N
NGC5576	E	inactive	26.4	N
NGC7619	E	inactive	50.7	N

NOTE. — Properties of the galaxies in the sample. Columns are: (1) Galaxy name; (2) Morphological type; (3) Activity type; (4) Distance in Mpc; (5) Presence or absence of dust in *HST* data from Simões Lopes et al. (2007) References for morphology, activity, and distance are provided in Simões Lopes et al. (2007).

Table 1, along with whether or not they were observed to have dust structures in the study of Simões Lopes et al. (2007).

### 3. DATA PROCESSING AND PHOTOMETRY

We obtained all available IRAC and MIPS data for these galaxies from the *Spitzer* archive. The IRAC data correspond to images in bandpasses centered at approximately  $3.6\mu\text{m}$ ,  $4.5\mu\text{m}$ ,  $5.7\mu\text{m}$ , and  $8\mu\text{m}$ . For most galaxies, the first three bands are dominated by stellar emission, while the fourth is dominated by emission from polycyclic aromatic hydrocarbons (PAHs). For most early-type galaxies, the fourth band is also dominated by stellar emission, rather than PAHs, as we discuss further below. The MIPS data correspond to images in bandpasses with nominal centers at  $24\mu\text{m}$ ,  $70\mu\text{m}$ , and  $160\mu\text{m}$ . Emission at  $24\mu\text{m}$  is typically dominated by hot dust, which is either interstellar or circumstellar, while emission at longer wavelengths is dominated by cooler, diffuse, interstellar dust. We typically started our analysis with the Basic Calibrated Data (BCD) for the MIPS observations and the Post-BCD (PBCD) products for the IRAC observations. In the subsections below we describe any additional processing, photometric measurements, and how we determined upper limits.

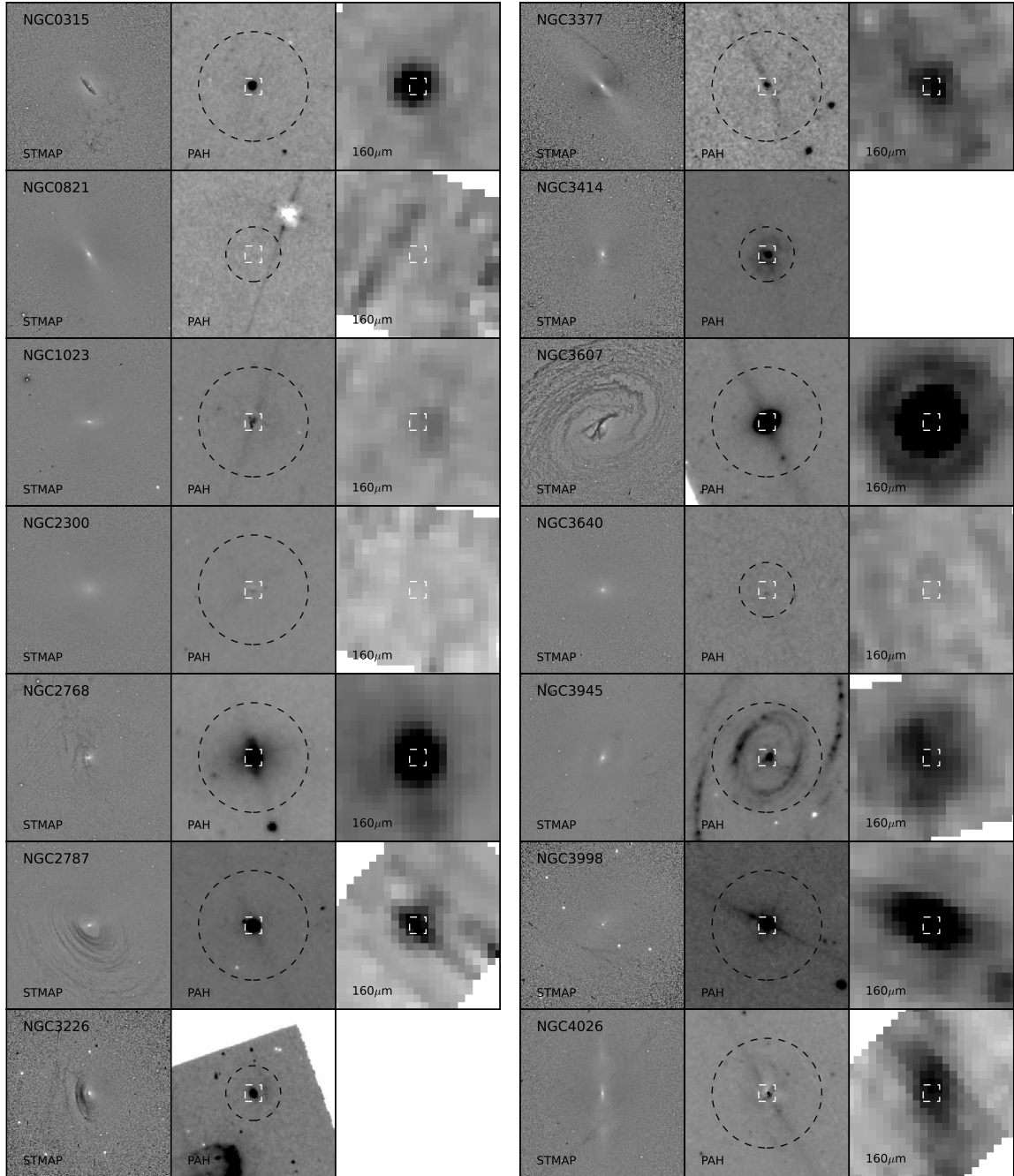


FIG. 2.— Structure maps (*left*), PAH images (*middle*), and MIPS  $160\mu\text{m}$  images (*right*) for the sample. The structure map is  $18''$  on a side, while the PAH and MIPS images are  $180''$  on a side. The small box on the PAH and MIPS images indicates the field of view of the structure map. The black, dashed circle on the PAH image indicates the photometric aperture used for the  $3.6\mu\text{m}$  to  $70\mu\text{m}$  photometry (a PSF model was used for the  $160\mu\text{m}$  data). The third panel is empty if  $160\mu\text{m}$  MIPS data were unavailable for that galaxy.

### 3.1. IRAC Data

The PBCD data for these galaxies are sufficiently robust that no additional processing was necessary in most cases. The few exceptions were galaxies that had relatively few IRAC observations. In these cases we obtained the BCD data from the archive and processed them into mosaics with the MOPEX software package from the *Spitzer* Science Center.

We measured aperture photometry in all four IRAC bands with the `phot` task in IRAF. We typically adopted an aperture radius of  $1'$  because this includes nearly all of the observed dust emission at longer wavelengths. In some cases

we used an  $0.5'$  radius due to either nearby, bright objects or the extent of the imaging data in one or more bands. In several cases bright, foreground stars were in the aperture and we masked them out by replacing those pixel values with the median of nearby pixels. The aperture size and photometry for each galaxy is listed in Table 2. These measurements include the extended source aperture correction.

The apertures are smaller than the full extent of the visible emission of these galaxies (e.g.  $D_{25}$ ). While these smaller apertures have less noise, in some cases they may lead to underestimates of the total emission.

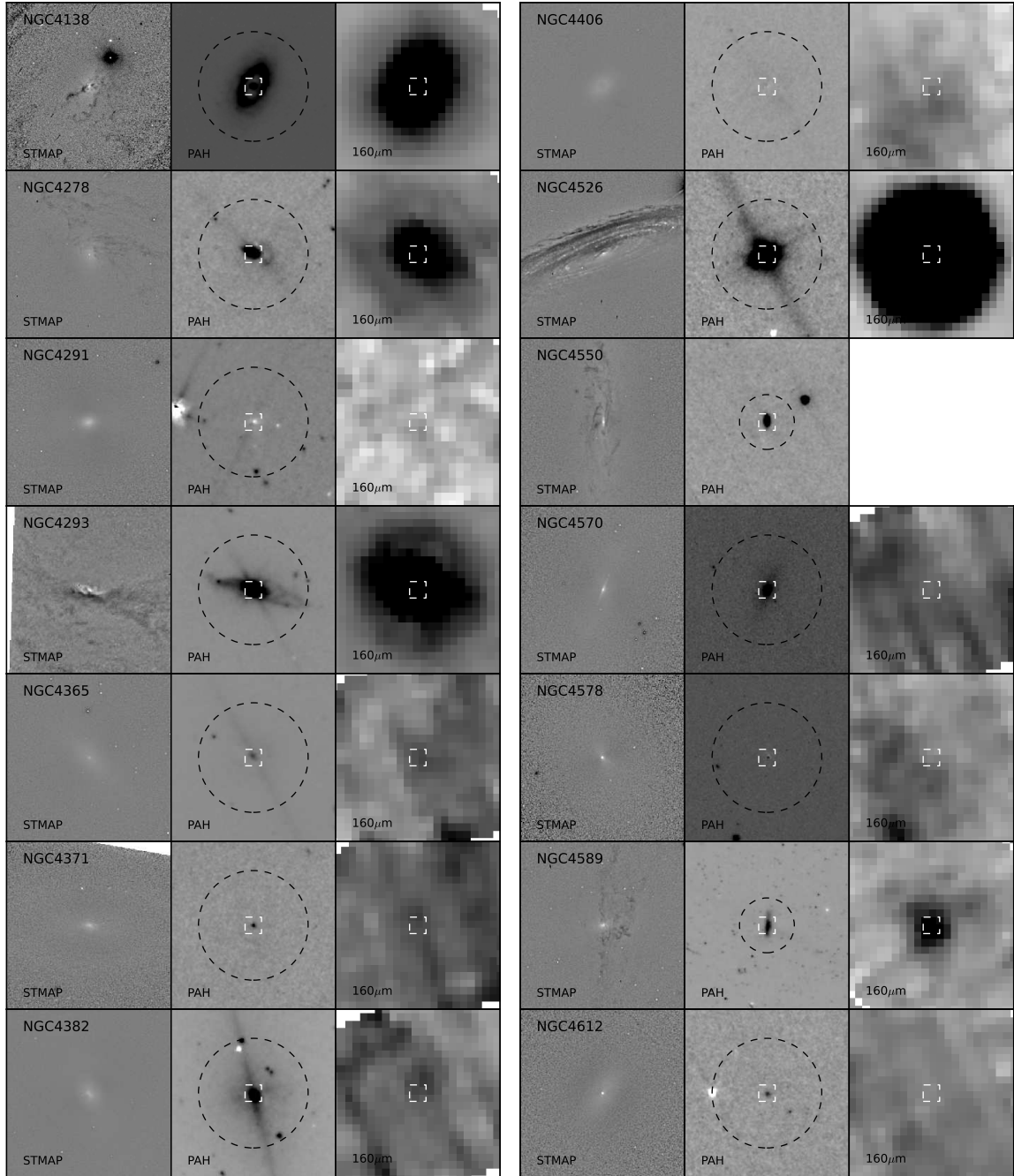


FIG. 3.— Continuation of Figure 2

### 3.2. MIPS Data

The *Spitzer* MIPS data were processed further with the MOPEX package. In addition to the mosaicing and other processing (e.g. median filtering), we used the IDL program `BCD column filter.pro` to calculate and subtract the median value from each column for each BCD. This process significantly diminishes artifacts in the images with minimal loss of flux from the source.

The fluxes at  $24\mu\text{m}$  and  $70\mu\text{m}$  were measured with aperture photometry in the GAIA package and the same aperture sizes employed for the IRAC measurements. Aperture corrections were applied to these measurements. These corrections were derived from the point spread function (PSF) of bright point

sources in MIPS data. Aperture photometry proved impossible to use for the  $160\mu\text{m}$  fluxes because it was difficult to accurately estimate the background. This is because the PSF at  $160\mu\text{m}$  is comparable in size to the field of view in many cases. There is also the strong possibility of contamination by other sources. We therefore extracted the  $160\mu\text{m}$  fluxes with the APEX package in MOPEX, which uses a PSF-fitting technique. The standard PSF available with the MOPEX package was used for this task.

We quantified several sources of measurement uncertainty. First, we calculated uncertainties for each galaxy in each band from the standard deviation of six measurements of the background. For some of the  $70\mu\text{m}$  data and most of the  $160\mu\text{m}$  data, this technique may not accurately capture the uncertain-

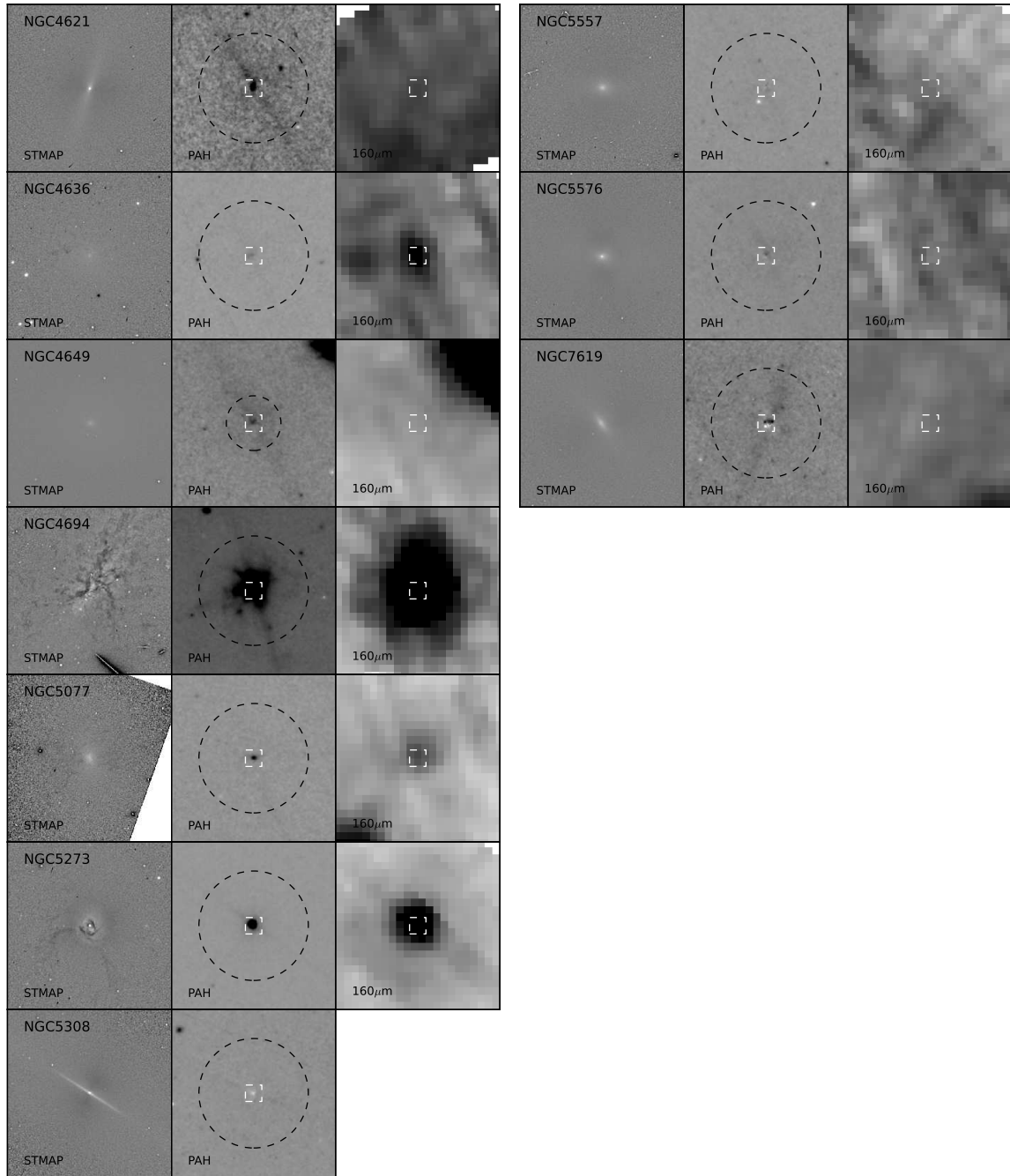


FIG. 4.— Continuation of Figure 2

ties as the field of view is too small. In these cases we set a lower limit on the uncertainty based on the noise in other, similar datasets with a larger field of view, such as work by Temi et al. (2009) and Bendo et al. (2012), as well as the confusion limit measurement by Frayer et al. (2009). Finally, we included the instrumental flux calibration uncertainties (of 4%, 10%, and 12% for  $24\mu\text{m}$ ,  $70\mu\text{m}$ , and  $160\mu\text{m}$ , respectively). Calibration uncertainties dominate the uncertainties for the majority of the detections.

All of the galaxies were easily detected at  $24\mu\text{m}$  and the apertures were centered on this emission. Detections at  $70\mu\text{m}$  and  $160\mu\text{m}$  were consistent with the same centroid as the  $24\mu\text{m}$  emission. If there was not an obvious detection in one of these two bands, then an upper limit was measured at the

coordinates of the  $24\mu\text{m}$  emission. In all cases we quote  $3\sigma$  upper limits. Because of the size of our aperture, as well as PSF-fitting at  $160\mu\text{m}$ , these upper limits are only valid if the dust is centrally concentrated.

Many of these archival datasets were included in previous studies, in particular Temi et al. (2009) and Bendo et al. (2012). Our fluxes generally agree to within the uncertainties with Temi et al. (2009), who employed a similar set of data processing and calibration techniques. The main differences are likely because Temi et al. (2009) employed apertures that were comparable in size to the visible extent of the galaxy. Our apertures are smaller, often by a factor of several, while at  $160\mu\text{m}$  we employed a PSF-based measurement rather than aperture photometry. We have larger differences

TABLE 2  
SPITZER PHOTOMETRY

Name	Aperture	3.55 $\mu$ m	4.49 $\mu$ m	5.73 $\mu$ m	7.87 $\mu$ m	23.68 $\mu$ m	71.42 $\mu$ m	155.9 $\mu$ m
NGC0315	1'	88.0	55.0	39.6	30.8	98.8 (4.0)	320.3 (33.4)	475 (58)
NGC0821	0.5'	100.9	60.6	40.2	25.1	8.8 (0.7)	< 25.9	< 87.4
NGC1023	1'	330.0	197.8	135.9	82.7	52.3 (2.1)	< 31.5	< 29.7
NGC2300	1'	122.6	73.0	49.4	30.2	19 (0.8)	< 16.9	< 66.6
NGC2768	1'	136.1	83.8	58.4	39.6	32.4 (1.3)	513.2 (51.5)	486 (61)
NGC2787	1'	178.4	107.8	78.6	60.8	40.5 (1.6)	962.9 (96.6)	833 (103)
NGC3226	0.5'	59.6	36.0	29.1	26.9	28 (1.2)	270.2 (28.0) <sup>p</sup>	...
NGC3377	1'	141.1	87.4	58.5	36.1	17.2 (0.7)	55.3 (12.3)	160 (22)
NGC3414	0.5'	98.8	59.9	42.1	30.5	26.2 (1.1)	272 (28.5)	...
NGC3607	1'	0.0	123.5	0.0	105.4	89 (3.6)	1620.1 (162.3)	2314 (278)
NGC3640	0.5'	138.0	84.3	56.7	35.3	19.5 (0.8)	< 25.6	< 49.8
NGC3945	1'	133.6	83.0	57.4	34.8	34.4 (1.4)	268.1 (27.4)	...
NGC3998	1'	199.4	127.0	96.8	74.9	149.5 (6.0)	521.5 (52.5)	615 (74)
NGC4026	1'	151.2	97.9	67.0	40.8	20.3 (0.8)	156 (16.2)	288 (35)
NGC4138	1'	94.1	62.1	64.6	102.8	173.9 (7.0)	2121.2 (212.2)	3555 (427)
NGC4278	1'	201.9	122.6	86.4	62.3	46.3 (1.9)	709.1 (71.4)	741 (90)
NGC4291	1'	84.3	51.9	34.4	20.6	21.4 (0.9)	< 32.9	< 39.1
NGC4293	1'	78.9	61.5	72.5	114.0	528.9 (21.2)	5193 (519.3)	6890 (827)
NGC4365	1'	191.7	116.0	81.0	49.6	31.2 (1.3)	< 16.0	< 35.3
NGC4371	1'	107.0	63.8	43.1	27.3	15.1 (0.6)	30.5 (6.3)	< 29.7
NGC4382	1'	206.8	131.2	94.9	58.8	54 (2.2)	< 29.0	< 34.4
NGC4406	1'	206.3	122.5	83.8	51.2	40.1 (1.6)	< 27.3	< 31.6
NGC4526	1'	310.6	191.7	170.0	224.2	284.8 (11.4)	7599.6 (760.0)	7049 (846)
NGC4550	0.5'	71.9	45.0	30.2	21.4	9.6 (0.5)	166.8 (18.3)	...
NGC4570	1'	150.7	90.5	60.0	36.9	14.5 (0.6)	< 25.0	< 29.7
NGC4578	1'	57.1	34.9	23.3	14.3	6.9 (0.4)	< 29.0	< 29.7
NGC4589	0.5'	103.9	64.4	44.8	29.9	14 (0.6)	204.8 (20.9)	326 (40)
NGC4612	1'	62.3	38.7	25.8	16.4	9.6 (0.5)	< 17.8	< 33.4
NGC4621	1'	224.6	132.1	89.8	55.5	33.2 (1.3)	< 16.4	< 29.7
NGC4636	1'	167.2	99.4	68.2	42.4	24 (1.0)	112.8 (16.0)	...
NGC4649	0.5'	399.7	234.7	161.6	99.1	59.4 (2.4)	< 18.7	< 29.7
NGC4694	1'	43.1	28.2	37.4	73.2	117.5 (4.7)	1391.9 (139.3)	2170 (262)
NGC5077	1'	93.1	56.5	38.8	25.3	20.3 (0.8)	171.8 (19.2)	192 (26)
NGC5273	1'	39.2	27.0	24.2	27.7	95.5 (3.8)	685 (68.8)	610 (74)
NGC5308	1'	88.5	54.1	36.7	21.9	7.6 (0.3)	< 26.3	...
NGC5557	1'	94.6	57.3	39.2	23.7	14.8 (0.6)	< 13.5	< 33.4
NGC5576	1'	119.0	74.2	51.8	31.3	16.1 (0.7)	< 19.4	< 32.5
NGC7619	1'	96.9	59.5	40.7	24.6	13.3 (0.5)	< 18.2	< 29.7

NOTE. — Photometry of the galaxies in the sample. Columns are: (1) Galaxy name; (2) Aperture radius in arcmin for the 3.6 $\mu$ m to 70 $\mu$ m measurements (a PSF model was used for the 160 $\mu$ m photometry, as well as the 70 $\mu$ m photometry of NGC3226, which is marked with a *p* superscript); (3-6) Flux in IRAC channels 1-4 in mJy; (7-9) Flux in MIPS channels 1-3 in mJy. Uncertainties include statistical and calibration uncertainties. All upper limits are  $3\sigma$  upper limits. While NGC4636 is clearly detected at 160 $\mu$ m, we were unable to obtain a good photometric measurement.

with the Bendo et al. (2012) measurements and the general sense of these differences is that our flux measurements tend to be smaller. Because Bendo et al. (2012) used similar aperture sizes to Temi et al. (2009), the difference is likely because Bendo et al. (2012) based their pipeline on an older set of processing and calibration tools. Two of the most significant differences we have traced to either the presence of a nearby companion (for NGC3226) or clumps of emission at large radii (for NGC4406, see also Gomez et al. 2010).

As our apertures are smaller than the full extent of the stellar emission (although not necessarily the dust emission), our measurements will underestimate the flux if the emission is more extended. In most cases these differences appear to be at most on the order of a few tens of percent. The only significant difference is NGC4526, where our 160 $\mu$ m measurement is only 60% of the value reported by Bendo et al. (2012), and about a factor of two below the PACS 160 $\mu$ m measurement of Auld et al. (2013), which has a much larger field of view and consequently better background measurement. We discuss the implications of our measurements on the inferred dust masses in §5.1.2.

#### 4. STELLAR AND CIRCUMSTELLAR EMISSION

Most of the dust in galaxies is in the interstellar medium. This dust is likely composed of a mix of amorphous silicate and graphitic grains, as well as small PAH particles. Both stars and PAH particles contribute emission to the 8 $\mu$ m IRAC band, so it is important to accurately determine the stellar contribution to the 8 $\mu$ m band in order to measure the PAH component. Similarly, both hot, circumstellar dust around evolved stars and hot, interstellar dust contribute emission to the 24 $\mu$ m MIPS band, so it is important to determine the circumstellar contribution to the 24 $\mu$ m band in order to quantify the warm component of the diffuse ISM. In the next two subsections we describe how we used our sample of galaxies with no evidence for interstellar dust to obtain an empirical measurement of the stellar and circumstellar emission in the 8 $\mu$ m and 24 $\mu$ m bands.

##### 4.1. Stellar Contribution

IRAC 8 $\mu$ m observations of most galaxies include contributions from both stellar photospheres and PAH molecules. In order to study the total flux and spatial distribution of PAHs, the conventional practice is to remove the stellar contribution by subtraction of a scaled version of the 3.6 $\mu$ m flux, where this scale factor is calculated from models of stellar photo-

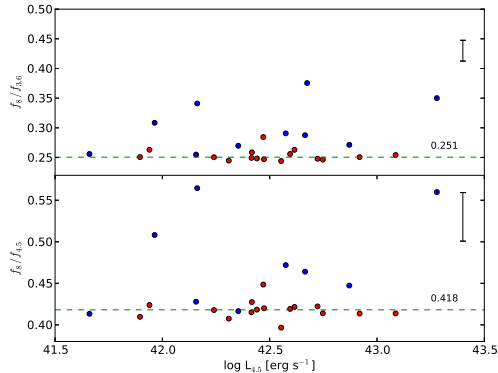


FIG. 5.— Ratio of  $8\mu\text{m}$  to  $3.6\mu\text{m}$  flux (*top panel*) and  $8\mu\text{m}$  to  $4.5\mu\text{m}$  flux (*bottom panel*) as a function of  $4.5\mu\text{m}$  luminosity for galaxies with the smallest value of this ratio. Red points correspond to galaxies without evidence for dust, both based on upper limits at  $160\mu\text{m}$  and the absence of dust structure in *HST* imaging. Blue points correspond to galaxies with  $160\mu\text{m}$  detections and dust structure in *HST* imaging. The galaxies with no evidence for dust have median ratios of  $f_8/f_{4.5} = 0.418 \pm 0.011$  and  $f_8/f_{3.6} = 0.251 \pm 0.010$  and we adopt these values to remove the stellar contribution at  $8\mu\text{m}$  for our early-type galaxy sample. The errorbar in each panel represents the average uncertainty in the measurement of the ratio. Several galaxies with detections at  $160\mu\text{m}$  (*blue points*) have similar value of this ratio, although some are substantially higher and off the upper end of the range shown on this figure.

spheres. Helou et al. (2004) estimated that this value is 0.232 based on stellar population models from Starburst 99 (Leitherer et al. 1999) and noted this factor is not very sensitive to star formation history or metallicity. They do note that the  $3.6\mu\text{m}$  emission may include a hot dust component, based on earlier work (Bernard et al. 1994; Hunt et al. 2002), but estimate that this is a small contribution. Draine et al. (2007) obtained a similar value of 0.260 with the assumption that the emission is described by a 5000K blackbody.

The stellar contribution at  $8\mu\text{m}$  is a small fraction of the total emission from the late-type spiral NGC 300 studied by Helou et al. (2004). This is also true for most of the galaxies in the SINGS sample studied by Draine et al. (2007). While approximately half of the galaxies in our sample are similarly expected to have substantial dust emission at  $8\mu\text{m}$ , others may have little to no dust emission in this band. For these galaxies, an accurate estimate of the scale factor specific to early-type galaxy stellar populations is necessary to correctly identify and measure PAH emission at  $8\mu\text{m}$ .

We have empirically estimated the appropriate scale factor for early-type galaxies with the nominally dust-free galaxies in our sample. Figure 5 shows the ratio of  $f_8/f_{3.6}$  and  $f_8/f_{4.5}$  for the subset of the sample with the smallest values of these ratios as a function of  $4.5\mu\text{m}$  luminosity. In both cases all of the dust-free galaxies have similar values of these ratios, which correspond to  $f_8/f_{3.6} = 0.25 \pm 0.01$  and  $f_8/f_{4.5} = 0.42 \pm 0.01$ . The uncertainty quoted for both ratios represents the rms variation of the dust-free galaxies. The average photometric uncertainty for the ratio measurement is also shown in each panel, although because it includes (correlated) absolute calibration uncertainties it is an overestimate of the true uncertainty in the individual points. The measured value for  $f_8/f_{3.6}$  is consistent at  $1\sigma$  with the value of 0.260 chosen by Draine et al. (2007) and is  $2\sigma$  from the value of 0.232 calculated by (Helou et al. 2004).

We have compared these values to the predicted flux ratios from stellar population models by Maraston (2005) and Conroy et al. (2009) to judge how well the models fit these

flux ratios, examine the expected variation due to stellar population differences, and estimate the significance of the  $24\mu\text{m}$  detections of apparently dust-free galaxies (in §4.2). As early-type galaxies are primarily composed of old stellar population, and this component is expected to be dominated by the stellar emission in the infrared, we only examine models with single stellar population ages, but consider metallicities from solar to super solar. From Maraston (2005) we calculate the  $f_8/f_{3.6}$  and  $f_8/f_{4.5}$  ratios for metallicities of  $Z = 0.02$ ,  $Z = 0.04$ , and  $Z = 0.07$ , a Kroupa IMF, and their red horizontal branch prescription. From Conroy et al. (2009) we calculate these ratios for  $Z = 0.019$  and  $Z = 0.035$ , a Kroupa IMF, the Padova isochrones, and the Basel library.

The flux ratios for these models as a function of population age are shown in Figure 6. The  $f_8/f_{3.6}$  and  $f_8/f_{4.5}$  ratios from the models agree well with the empirical data shown in Figure 5. The Maraston (2005) models indicate a trend of larger  $f_8/f_{3.6}$  ratio at larger metallicities. The Conroy et al. (2009) models appear relatively insensitive to metallicity, but do show some increase at larger ages. The  $f_8/f_{4.5}$  ratios for both sets of models agree well with each other and the data, and also appear essentially independent of age and metallicity. Models with different IMF prescriptions lead to essentially identical results and are not shown.

#### 4.2. Circumstellar Dust

While the galaxies without evidence for dust in *HST* images were also undetected at  $70\mu\text{m}$  and  $160\mu\text{m}$ , all are detected at  $24\mu\text{m}$ . Figure 7 displays a similar plot to Figure 5, but for  $24\mu\text{m}$  rather than  $8\mu\text{m}$ . This figure indicates that the  $24\mu\text{m}$  emission is relatively constant for the apparently dust-free galaxies, although the scatter is larger than for the  $8\mu\text{m}$  emission. The larger scatter may be due to stellar population differences, such as age or metallicity. This was indicated by the work of Athey et al. (2002), who measured significant intrinsic scatter between the mid-infrared and *B*-band luminosities of nine early-type galaxies. The ratios and the rms variation we measure are  $f_{24}/f_{4.5} = 0.253 \pm 0.074$  and  $f_{24}/f_{3.6} = 0.154 \pm 0.047$ . While some of the dusty galaxies also have consistent values of these ratios, the ratios for many are much larger and some are not shown on the figure.

These ratios for all galaxies, including the apparently dust-free galaxies, are several times larger than expected from stellar photospheric emission alone. The right panels of Figure 6 show the empirical  $f_{24}/f_{3.6}$  and  $f_{24}/f_{4.5}$  ratios compared to the same Maraston (2005) and Conroy et al. (2009) models described in the previous section. In both cases the empirical values are approximately a factor of three higher than all of the models. The models are also in good agreement with each other and show little evidence for significant variation as a function of stellar population age or metallicity. We therefore conclude that the  $24\mu\text{m}$  emission is clearly in excess of stellar photospheric emission, yet it does scale with the flux of the stellar population.

The most likely origin of this excess  $24\mu\text{m}$  flux is emission from hot dust in the circumstellar envelopes of evolved stars. For a population of galaxies with relatively uniform and old stellar populations, the fraction of evolved stars with circumstellar dust should be an approximately fixed fraction of the stellar mass, which in turn is reasonably well represented by the flux at  $3.6\mu\text{m}$  and  $4.5\mu\text{m}$ . Models of infrared emission from dust shells around AGB stars by Piovani et al. (2003) include substantial circumstellar emission from  $10\text{--}40\mu\text{m}$  from old stars. This emission includes a local maximum that ap-



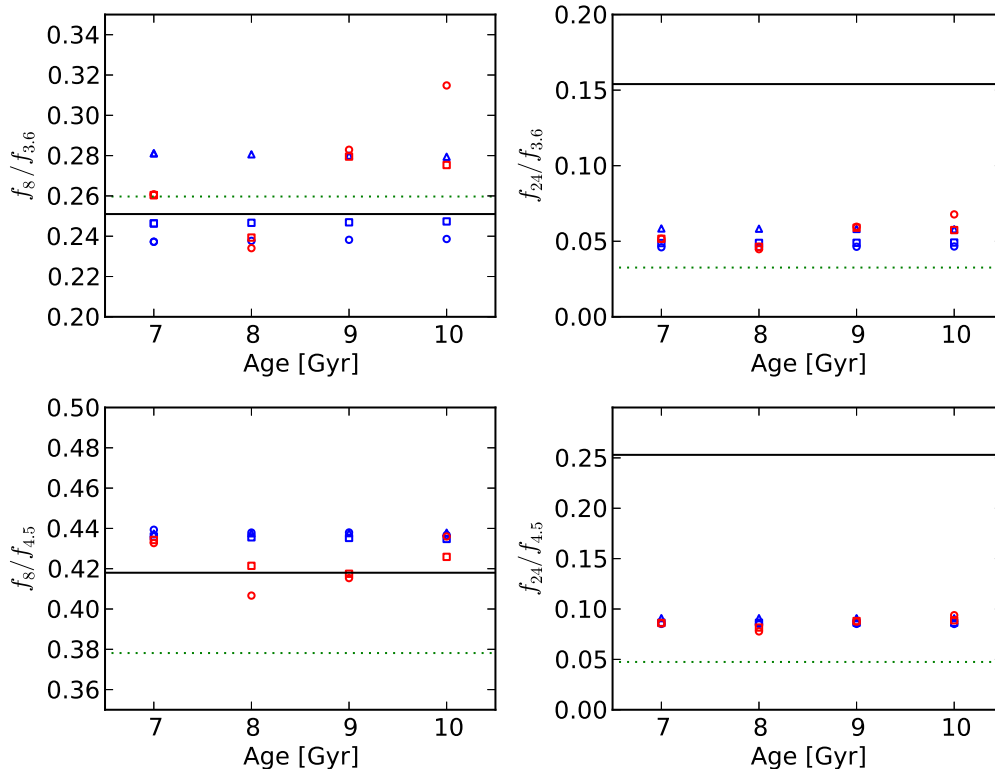


FIG. 6.— *Spitzer* IRAC and MIPS band flux ratios for stellar emission from various old stellar population models as a function of age (i.e. with no ISM or circumstellar dust contribution). The flux ratios shown are  $f_8/f_{3.6}$  (top left),  $f_{24}/f_{3.6}$  (top right),  $f_8/f_{4.5}$  (bottom left), and  $f_{24}/f_{4.5}$  (bottom right). The model points from Maraston (2005) are for  $Z = 0.02$  (blue circles),  $Z = 0.04$  (blue squares), and  $Z = 0.07$  (blue triangles). The model points from Conroy et al. (2009) are for  $Z = 0.019$  (red circles) and  $Z = 0.035$  (red squares). The empirical ratios (black solid line) and a 5000 K blackbody (dotted line) are also shown. The models are a reasonable representation of the IRAC flux ratios, but not the MIPS to IRAC flux ratios, which is evidence for a hot, circumstellar dust component. See §§4.1 and 4.2 for details.

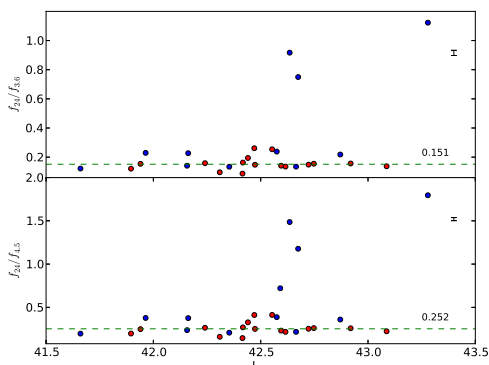


FIG. 7.— Same as Figure 5 for the ratio of  $24\mu\text{m}$  to  $3.6\mu\text{m}$  (top panel) and to  $4.5\mu\text{m}$  (bottom panel). Red points correspond to galaxies without evidence for dust, both based on upper limits at  $160\mu\text{m}$  and the absence of dust structure in *HST* imaging. Blue points correspond to galaxies with  $160\mu\text{m}$  detections and dust structure in *HST* imaging. The galaxies with no evidence for dust have median ratios of  $f_{24}/f_{4.5} = 0.252 \pm 0.072$  and  $f_{24}/f_{3.6} = 0.151 \pm 0.045$ . The errorbar in each panel represents the average uncertainty in the measurement of the ratio.

proximately falls within the  $24\mu\text{m}$  band and has been identified with silicate emission in oxygen-rich AGB stars (Suh 2002). Bressan et al. (2007) studied IRS *Spitzer* spectroscopy of many early-type galaxies, including a number of the inactive galaxies in our sample (NGC 4365, NGC 4371, NGC

4382, NGC 4570, NGC4621), and these data show clear evidence for dust emission beyond  $8\mu\text{m}$  that is well fit by a dusty silicate circumstellar envelope model (Bressan et al. 1998). This emission spectrum is also well fit by a scaled version of IRS data for stars in the globular cluster 47 Tuc studied by Lebzelter et al. (2006).

For galaxies with a substantial amount of cold, interstellar dust ( $\geq 10^6 M_\odot$ ), such as late-type galaxies, the circumstellar dust emission at  $24\mu\text{m}$  is relatively negligible. However, most of the galaxies in our sample are substantially more dust poor for their stellar mass. It is consequently important to estimate and subtract the circumstellar contribution to the  $24\mu\text{m}$  MIPS photometry to obtain an accurate estimate, or upper limit, for the cold dust component. In the next section, we describe our dust model fits and how we incorporate the circumstellar dust emission into the interstellar dust mass estimates and upper limits.

## 5. INTERSTELLAR DUST

Approximately half of these early-type galaxies are detected in the MIPS  $70\mu\text{m}$  and  $160\mu\text{m}$  bands, which indicates the presence of cold, interstellar dust. In this section we describe how we fit our IRAC and MIPS photometry for these galaxies with the dust models of Draine & Li (2007), estimate the total dust mass, and compare the properties of the dust in early-type galaxies to dust in other morphological types. We also derive upper limits to the cold dust mass for galaxies that

we do not detect at  $70\mu\text{m}$  and  $160\mu\text{m}$ .

All of the galaxies with dust lanes in the *HST* structure maps are also detected at  $8\mu\text{m}$ . We use the empirical scale factor derived in §4.1 to measure the PAH emission in this bandpass and examine the spatial distribution of the PAHs. We also estimate the fraction of the dust in PAHs with the Draine & Li (2007) models for the galaxies with suitable data and compare them to other studies.

### 5.1. Fit to Draine & Li Models

Most of the dust in galaxies is in the interstellar medium. This dust absorbs energy from starlight, which then re-emits this radiation at mid- and far-infrared wavelengths. The emission spectrum of this dust can be used to estimate the total mass in dust, as well as other properties, given a model for the typical grain size distribution and composition. These models are used to characterize the absorption and re-emission of the Interstellar Radiation Field (ISRF) as a function of wavelength and may consequently be used to derive the dust mass from the observed luminosity.

We employ the models of Draine & Li (2007) to characterize the properties of the dust in these galaxies and derive dust masses. These models assume that dust is comprised of a mixture of carbonaceous and silicate grains, and varying amounts of PAH particles. The main observational constraints on the grain size distribution, relative mixture and opacities of carbonaceous and silicate grains, and the properties of the PAH particles are the wavelength-dependent extinction observed in the Milky Way (Mathis et al. 1983), long-wavelength observations of the Milky Way (Finkbeiner et al. 1999), and studies of the properties of PAH emission from the Milky Way and nearby galaxies (e.g. Smith et al. 2007).

The mid- to far-infrared emission from dust grains depends on the incident ISRF, and thus a characterization of the distribution of starlight intensities is also necessary to infer the properties of the dust. Integrated measurements of entire galaxies will typically include emission from dust that has been heated by a wide range of different values of the local ISRF. While some studies perform detailed radiative transfer calculations to estimate the local value of the ISRF for individual dust grains (e.g. Popescu et al. 2000; Gordon et al. 2001; Piovan et al. 2006), this approach typically relies on many assumptions and may not be necessary to obtain reasonable estimates of the dust mass and other dust properties. Draine & Li (2007) propose a simple parametrization of the ISRF where a fraction  $\gamma$  of the dust mass is exposed to high-intensity radiation, such as may occur near the sites of star formation, and the remainder is exposed to the average ISRF. The dust exposed to a wide range of ISRF intensities, which Draine & Li (2007) refer to as dust associated with Photodissociation Regions (or simply PDR dust) is exposed to a power-law distribution of intensities from  $U_{min}$  to  $U_{max}$ , where  $U$  is a dimensionless scale factor such that  $U = 1$  for the local ISRF derived by Mathis et al. (1983),  $U_{min}$  is the minimum value of the ISRF,  $U_{max}$  is the maximum value, and the power-law index is  $\alpha$ . The dust exposed to the average ISRF is exposed to a radiation field of intensity  $U_{min}$  and is referred to as diffuse dust. The diffuse dust is expected to be relatively cold and dominate the emission in the  $70\mu\text{m}$  and  $160\mu\text{m}$  bands, while if present the PDR dust may be important at shorter wavelengths, most notably the  $24\mu\text{m}$  MIPS band. Draine et al. (2007) find that the SEDs of galaxies in the SINGS sample are satisfactorily reproduced with  $U_{max} = 10^6$  and a power-law index of  $\alpha = 2$ . We fix these two model pa-

rameters at those values for this study as well. The ISRF for the dust models is consequently just characterized by  $U_{min}$  and  $\gamma$ . As early-type galaxies have relatively little star formation, we do not expect large values of  $\gamma$ ; however,  $\gamma$  may not be completely negligible as some early-type galaxies have modest amounts of star formation. The PDR component may also represent dust near the active nucleus in the small number of moderate luminosity AGN in this sample.

Very small dust grains and PAHs are subject to single-photon heating to high temperatures and thus emit at much shorter wavelengths than larger grains (Sellgren 1984). PAHs are also very likely to be the cause of the emission features observed at 3.3, 6.2, 7.7, 8.6, and  $11.3\mu\text{m}$  in the Milky Way and most galaxies, and in particular the  $7.7\mu\text{m}$  feature appears to dominate the nonstellar emission in the IRAC  $8\mu\text{m}$  band. This emission has been identified with C-C stretch and C-H bending modes, primarily from ionized PAHs. The Draine & Li (2007) models include PAHs as small as 20 carbon atoms and note that PAHs with  $< 1000$  carbon atoms dominate the emission at wavelengths  $\lambda < 20\mu\text{m}$ . They present seven different Milky Way dust models that have different size distributions of very small grains and different PAH fractions  $q_{PAH}$  of 0.5% to 4.6%, where  $q_{PAH} = 4.6\%$  is a reasonable match to the Milky Way. Because each of these seven dust models has a different PAH fraction,  $q_{PAH}$  uniquely describes the dust model. The dust emission from a given galaxy is consequently characterized by  $q_{PAH}$ ,  $U_{min}$ ,  $\gamma$ , and the total dust mass  $M_{dust}$ . In the next subsection we describe how we derive these four parameters.

#### 5.1.1. Flux Ratios

The  $8\mu\text{m}$ ,  $24\mu\text{m}$ ,  $70\mu\text{m}$ , and  $160\mu\text{m}$  bands may be dominated by dust emission. We use the data from these four bands to determine the four parameters of the Draine & Li (2007) model:  $q_{PAH}$ ,  $U_{min}$ ,  $\gamma$ , and  $M_{dust}$ . Our approach uses the graphical procedure described in Draine & Li (2007) to estimate the best-fit dust model. This procedure employs three flux ratios to determine the model that is the best fit to the spectral shape. The total luminosity is used to estimate the dust mass in the context of the best-fit model. The ratios defined in that paper are:

$$P_{7.9} = \frac{\langle \nu f_{\nu}^{ns} \rangle_{7.9}}{\langle \nu f_{\nu} \rangle_{71} + \langle \nu f_{\nu} \rangle_{160}} \quad (1)$$

$$P_{24} = \frac{\langle \nu f_{\nu}^{ns} \rangle_{24}}{\langle \nu f_{\nu} \rangle_{71} + \langle \nu f_{\nu} \rangle_{160}} \quad (2)$$

$$R_{71} = \frac{\langle \nu f_{\nu} \rangle_{71}}{\langle \nu f_{\nu} \rangle_{160}} \quad (3)$$

The superscript “ns” refers to the nonstellar contribution to that bandpass. For the  $8\mu\text{m}$  band, this is the value after subtraction of the empirical stellar contribution with the procedure described in §4.1. For the  $24\mu\text{m}$  band, this is the value after the subtraction of the empirical stellar and circumstellar dust contribution to the  $24\mu\text{m}$  band as described in §4.2. The measured values of these ratios are listed in Table 3.

Not all of the galaxies with detections at  $8\mu\text{m}$ ,  $70\mu\text{m}$ , and  $160\mu\text{m}$  have a value for  $P_{7.9}$  in Table 3 because in three cases (NGC3377, NGC4026, and NGC5077) the flux of the nonstellar component at  $8\mu\text{m}$  is consistent with the uncertainty in the empirical scale factor and our aperture measurements, even though weak PAH emission is apparent in Figures 2 – 4.

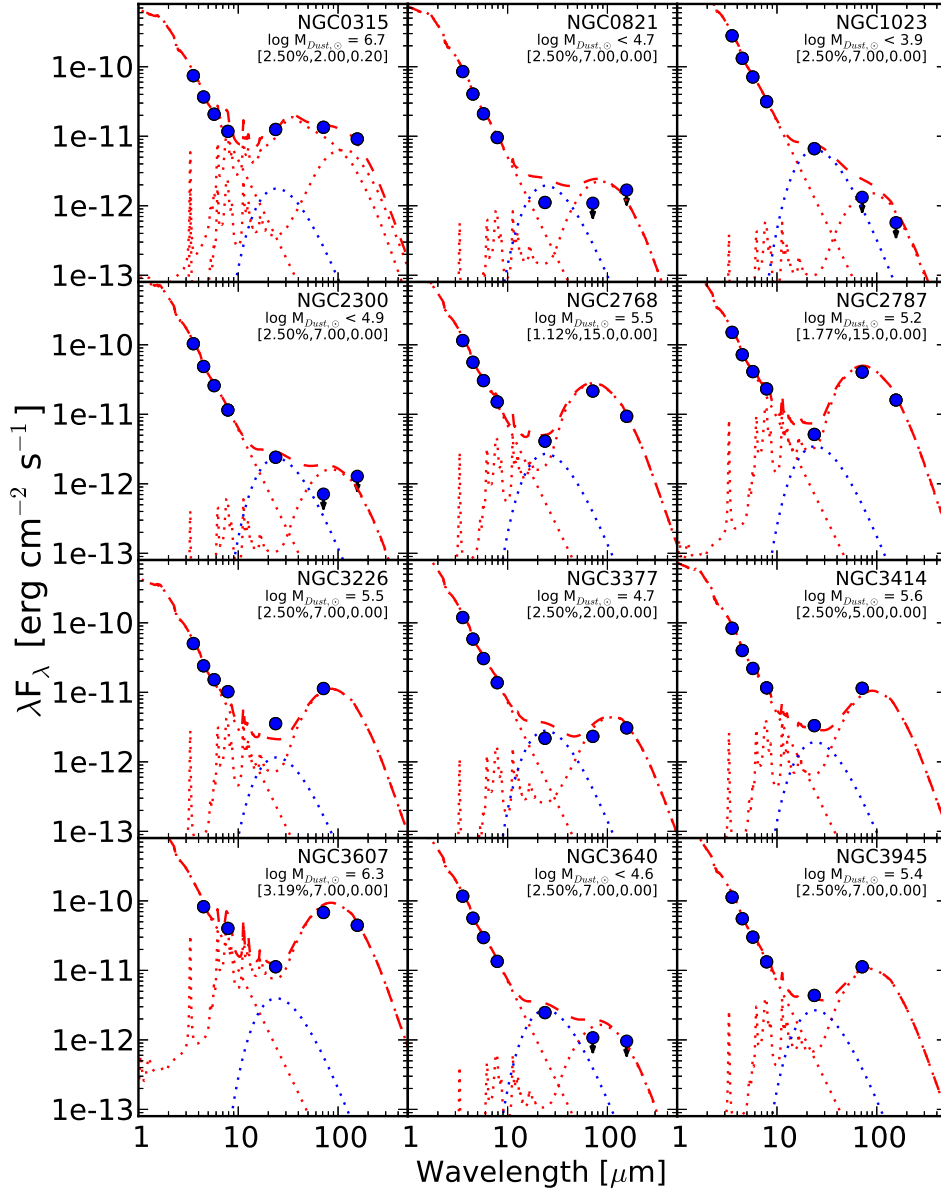


FIG. 8.— Infrared spectral energy distributions and model fits. The IRAC and MIPS photometric measurements (*blue circles or arrows*) are shown with a stellar model from Maraston (2005), diffuse and PDR dust models from Draine & Li (2007) (*red, dotted lines*), and a simple circumstellar dust model (*blue, dotted lines*) that corresponds to a fixed fraction of the  $4.5\mu\text{m}$  emission. The sum of these components is also shown (*red, dashed line*). The dust mass estimate, as well as either the best-fit or assumed dust model parameters ( $q_{PAH}$ ,  $U_{min}$ , and  $\gamma$ ) are listed below each galaxy’s name. The dust model fits are described in section §5.1.

For a similar reason, no  $P_{24}$  value is quoted for seven galaxies (the previous three cases, as well as NGC2768, NGC2787, NGC4278, and NGC4589) because there is more substantial variation in the empirical scale factor that corrects for the contribution from (mostly) hot, circumstellar dust in this pass-band.

The ratio  $P_{7,9}$  is effectively a measure of the fraction of the dust emission that is radiated by PAHs, and thus provides the strongest constraint on the dust model and the  $q_{PAH}$  parameter.

Draine & Li (2007) note that because the  $8\mu\text{m}$  emission is almost exclusively due to single photon heating,  $P_{7,9}$  is not very sensitive to the starlight intensity. The exception is that if the PAH fraction is very small, exposure to a more intense ISRF (larger  $\gamma$ ) will lead to enhanced PAH emission that may produce values of  $P_{7,9}$  that are comparable to models with larger  $q_{PAH}$  and smaller values of  $\gamma$ .  $P_{7,9}$  is less sensitive to  $\gamma$  for larger values of  $q_{PAH}$  because these galaxies exhibit substantial PAH emission even when  $\gamma = 0$ .

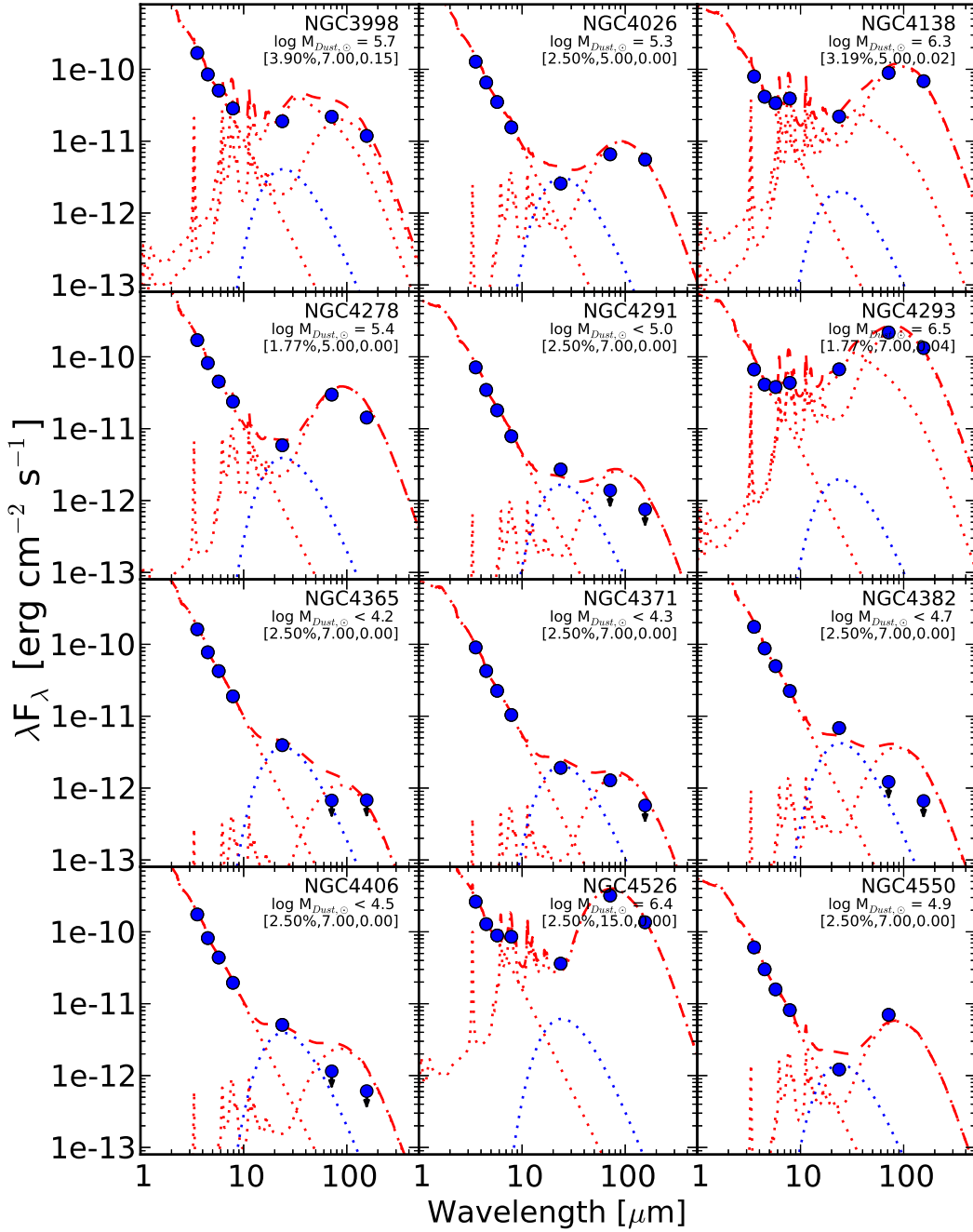


FIG. 9.— Continuation of Figure 8.

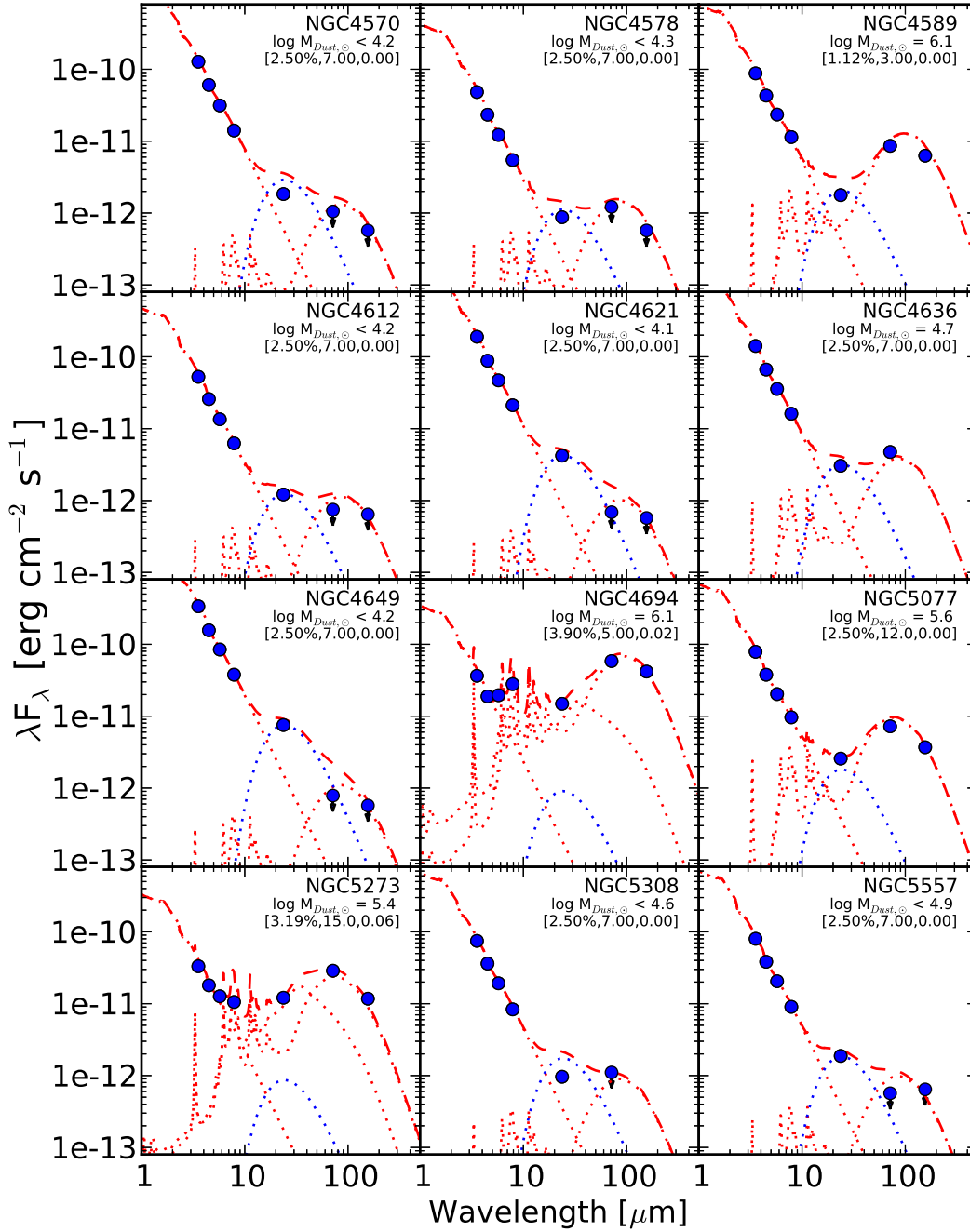


FIG. 10.— Continuation of Figure 8.

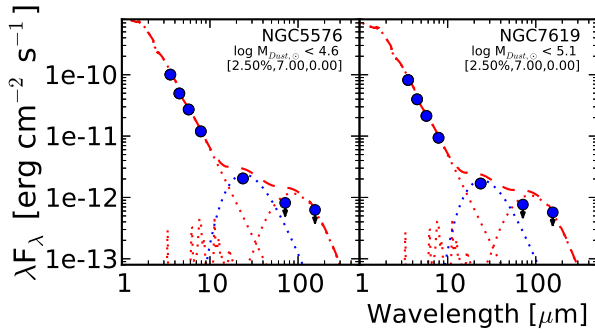


FIG. 11.— Continuation of Figure 8.

TABLE 3  
DUST MODEL FITS

Name	P7.9	P24	R71	$q_{PAH}$ [%]	$U_{min}$	$\gamma$	$\log M_{dust}$
NGC0315	0.13	0.48	1.47	2.50	2.0	0.2	6.7
NGC0821	...	...	...	2.50	7.0	0.0	<4.7
NGC1023	...	...	...	2.50	7.0	0.0	<3.9
NGC2300	...	...	...	2.50	7.0	0.0	<4.9
NGC2768	0.06	...	2.31	1.12	15.0	0.0	5.5
NGC2787	0.11	...	2.52	1.77	15.0	0.0	5.2
NGC3226	...	...	...	2.50	7.0	0.0	5.5
NGC3377	...	...	0.75	2.50	2.0	0.0	4.7
NGC3414	...	...	...	2.50	5.0	0.0	5.6
NGC3607	0.18	0.07	1.53	3.19	7.0	0.0	6.3
NGC3640	...	...	...	2.50	7.0	0.0	<4.6
NGC3945	...	...	...	2.50	7.0	0.0	5.4
NGC3998	0.25	0.44	1.85	3.90	7.0	0.15	5.7
NGC4026	...	...	1.18	2.50	5.0	0.0	5.3
NGC4138	0.19	0.13	1.30	3.19	5.0	0.02	6.3
NGC4278	0.10	...	2.09	1.77	5.0	0.0	5.4
NGC4291	...	...	...	2.50	7.0	0.0	<5.0
NGC4293	0.10	0.19	1.65	1.77	7.0	0.04	6.5
NGC4365	...	...	...	2.50	7.0	0.0	<4.2
NGC4371	...	...	...	2.50	7.0	0.0	<4.3
NGC4382	...	...	...	2.50	7.0	0.0	<4.7
NGC4406	...	...	...	2.50	7.0	0.0	<4.5
NGC4526	0.12	0.07	2.35	2.50	15.0	0.0	6.4
NGC4550	...	...	...	2.50	7.0	0.0	4.9
NGC4570	...	...	...	2.50	7.0	0.0	<4.2
NGC4578	...	...	...	2.50	7.0	0.0	<4.3
NGC4589	0.08	...	1.37	1.12	3.0	0.0	6.1
NGC4612	...	...	...	2.50	7.0	0.0	<4.2
NGC4621	...	...	...	2.50	7.0	0.0	<4.1
NGC4636	...	...	...	2.50	7.0	0.0	4.7
NGC4649	...	...	...	2.50	7.0	0.0	<4.2
NGC4694	0.23	0.14	1.40	3.90	5.0	0.02	6.1
NGC5077	...	...	1.95	2.50	12.0	0.0	5.7
NGC5273	0.15	0.28	2.45	3.19	15.0	0.06	5.4
NGC5308	...	...	...	2.50	7.0	0.0	<4.6
NGC5557	...	...	...	2.50	7.0	0.0	<4.9
NGC5576	...	...	...	2.50	7.0	0.0	<4.6
NGC7619	...	...	...	2.50	7.0	0.0	<5.1

NOTE.— Dust model results of the galaxies in the sample. Columns are: (1) Galaxy name; (2) P7.9; (3) P24; (4) R71; (5)  $q_{PAH}$ ; (6)  $U_{min}$ ; (7)  $\gamma$ ; (8)  $\log M_{dust}$  in solar masses. Galaxies with measurements of P7.9, P24 and/or R71 were fit with the Draine & Li (2007) models. The remaining galaxies were fit with a fixed set of parameters: ( $q_{PAH}$ ,  $U_{min}$ ,  $\gamma$ ) = (2.50%, 7.0, 0.0). Dust mass upper limits are for this fixed model and the  $3\sigma$  upper limits at  $70\mu\text{m}$  and  $160\mu\text{m}$ . More details are provided in §5.1.

The value of  $\gamma$  is mostly determined by the ratio  $P_{24}$ . This ratio is sensitive to the fraction of the dust emission near  $24\mu\text{m}$  and is dominated by hot, PDR dust ( $\gamma > 0$ ) if a hot component is present. According to Draine & Li (2007), when larger grains are heated by starlight intensities above  $U \sim 20$ , they will contribute to the  $24\mu\text{m}$  emission. In contrast, dust that is heated by starlight intensities of  $U \sim 0.1 - 10$  is sufficiently cold that it emits most of its luminosity at longer wavelengths, such as the  $70\mu\text{m}$  and  $160\mu\text{m}$  bands.

The coldest dust component is diffusely distributed in the ISM and heated by the average ISRF of the galaxy,  $U_{min}$ . The ratio  $R_{71}$  is sensitive to  $U_{min}$  because the intensity of the ISRF is correlated with the characteristic temperature of the cold component, and this affects the ratio of the flux in the  $70\mu\text{m}$  and  $160\mu\text{m}$  bands. For small values of  $\gamma$  (on order a few percent or less), the ratio  $R_{71}$  is a very sensitive to  $U_{min}$  because the  $70\mu\text{m}$  flux has a negligible contribution from PDR dust. For larger values of  $\gamma$ , the PDR dust contribution to the  $70\mu\text{m}$  emission is more important. In galaxies with substantial star formation, the values of both  $R_{71}$  and  $P_{24}$  are larger and  $R_{71}$  is less sensitive to  $U_{min}$ .

### 5.1.2. Dust Model Parameters

There are eight galaxies in our sample with sufficient data to constrain all three Draine & Li (2007) model parameters. For these galaxies we follow the graphical procedure recommended by Draine & Li (2007) and first estimate  $q_{PAH}$  from the values of  $P_{7.9}$  and  $R_{71}$ , and then use the values of  $P_{24}$  and  $R_{71}$  to estimate  $\gamma$  and  $U_{min}$ . Four additional galaxies have just  $P_{7.9}$  and  $R_{71}$ , which is sufficient to constrain the dust model. A histogram of  $q_{PAH}$  for these 11 galaxies is shown in the first panel of Figure 12. The median value of  $q_{PAH}$  is 2.50% for these galaxies. The second panel shows the distribution of  $\gamma$  for the subset of eight galaxies with sufficient coverage of the diffuse emission. The median value value of  $\gamma$  for these eight is 0.03. Finally, there are three galaxies with just  $R_{71}$ . For these galaxies we assume  $q_{PAH} = 2.50\%$  and  $\gamma = 0$  (to provide a more conservative constraint on the dust mass than  $\gamma = 0.03$ ) and then estimate  $U_{min}$ . The median value of  $U_{min}$  is 7.0.

With the dust model fixed, the dust mass is:

$$M_{dust} = \frac{\Psi}{\langle U \rangle} (\langle \nu f \nu \rangle_{24} + \langle \nu f \nu \rangle_{71} + \langle \nu f \nu \rangle_{160}) D^2. \quad (4)$$

The quantity  $\Psi$  is uniquely determined by the three parameters  $q_{PAH}$ ,  $\gamma$ , and  $U_{min}$  that describe the dust model, the quantity  $\langle U \rangle$  accounts for starlight heating in both PDRs and the diffuse ISM, and  $D$  is the distance. Dust mass histograms are shown for different morphological types in Figure 13 and for active and inactive galaxies in Figure 14.

The distributions of  $q_{PAH}$ ,  $\gamma$ , and  $U_{min}$  are generally different from the distributions found by Draine et al. (2007) for the SINGS sample. The  $q_{PAH}$  values are generally lower, with the median of  $q_{PAH} = 2.5\%$  below the median value of 3.4% found by Draine et al. (2007) for the 61 galaxies in the SINGS sample with similar IRAC and MIPS data. The  $8\mu\text{m}$  PAH feature is mostly due to ionized PAHs (Joblin et al. 1994), so the weakness of this feature may indicate a greater fraction of neutral PAHs, rather than a smaller PAH fraction. Kaneda et al. (2005) proposed this explanation based on their study of IRS spectra for four elliptical galaxies, which showed the short-wavelength PAH features were weak or absent, but the longer wavelength features at  $11.3\mu\text{m}$  and  $12.7\mu\text{m}$  were prominent. Their sample includes NGC4589, for which our

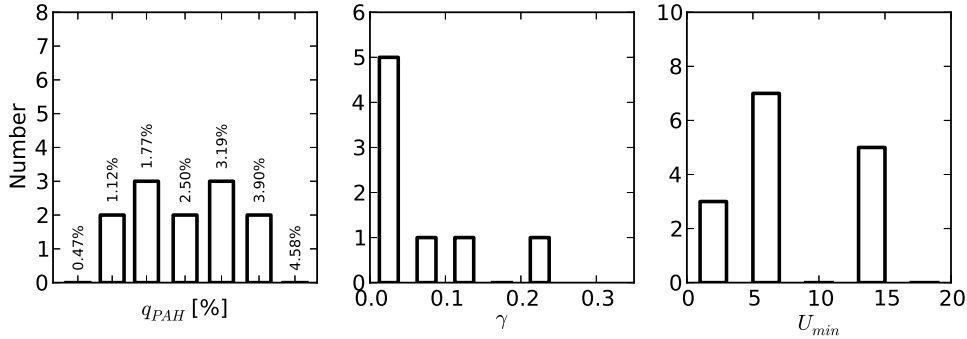


FIG. 12.— Distribution of the dust model parameters  $q_{PAH}$  (left),  $\gamma$  (middle), and  $U_{min}$  (right) in galaxies with sufficient detections to constrain one or more of these quantities. Note that NGC3998 has  $\gamma = 1$  and consequently does not fall within the range shown in the middle panel.

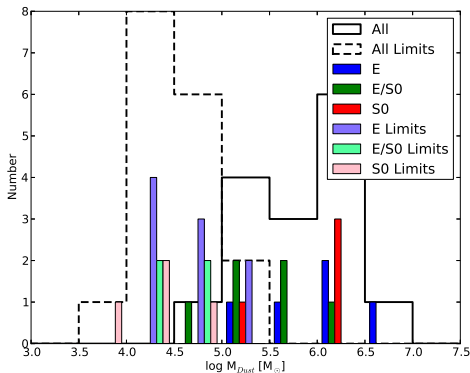


FIG. 13.— Distribution of dust masses and upper limits as a function of morphological type.

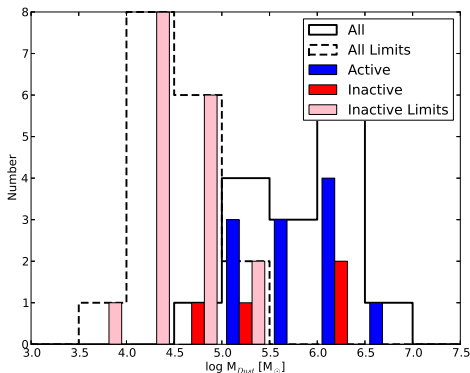


FIG. 14.— Distribution of dust masses and upper limits as a function of nuclear activity.

best model fit yields  $q_{PAH} = 1.12\%$ , yet the longer wavelength PAH features are clearly present in the IRS spectrum. Kaneda et al. (2005) suggest the relative absence of UV radiation in ellipticals could produce physical conditions amenable to primarily neutral PAHs. Such conditions are also indicated by the spectral energy distribution of the bulge of M31 by Groves et al. (2012).

Other potential explanations include the preferential destruction of small particles, such as due to sputtering in hot gas or an AGN, and low gas-phase metallicities. The dominance of larger PAHs over smaller ones, which could be a consequence of sputtering (Schutte et al. 1993; Tsai & Math-

ews 1995; Micelotta et al. 2010), would weaken the  $8\mu\text{m}$  feature. The  $q_{PAH}$  value is also observed to decline in galaxies with low gas-phase oxygen abundance. Draine et al. (2007) find that the median PAH fraction is 1.0% for galaxies with gas-phase oxygen abundances below  $12 + \log_{10} \text{O}/\text{H} < 8.1$  (it is also low for a small fraction of higher metallicity galaxies). Even though our sample is expected to possess solar to super-solar stellar abundances, the cold gas abundance may be quite low if it is the remnant of an accreted, low-mass satellite. Finally, relatively luminous AGN have also been implicated in the destruction of PAHs (Lutz et al. 2008) and all but three of the galaxies with detections in all seven bands are AGN, although they are low luminosity AGN. Smith et al. (2007) found that AGN may modify the relative distribution of intensities of various PAH features, and in particular suppress those from  $5-8\mu\text{m}$ . However, low-luminosity AGN do not appear to negatively effect the PAH abundance, as Draine et al. (2007) found that the median  $q_{PAH}$  fraction was actually slightly higher (3.8%) for AGN than the median of their full sample, as well the median of 28 galaxies with HII nuclei (3.1%).

Nearly all of the galaxies have  $\gamma < 0.1$  and the median value is  $\gamma = 0.03$ . This is consistent with the near-absence of star formation in these galaxies. The small values of  $\gamma$  also mean that the model fits and dust masses are more reliable, as in this regime the parameter  $R_{71}$  provides a better estimate of  $U_{min}$ . The median  $U_{min}$  value for this sample is 7.0, which is several times higher than the SINGS sample median of 1.5. The median for the subsample of SINGS galaxies with SCUBA data is in better agreement with our data. In the case of SINGS galaxies with SCUBA observations, the cold and PDR dust components are better separated, and thus  $U_{min}$  is better measured for those galaxies. We may be able to measure larger values of  $U_{min}$  without longer-wavelength sub-mm observations because our galaxies have lower values of  $\gamma$ . Early-type galaxies may also have more intense IS-RFs than spiral galaxies due to the presence of hot, evolved stars and higher stellar densities. This is also suggested by their higher dust temperatures relative to spirals (Bendo et al. 2013; Skibba et al. 2011; Smith et al. 2012; Auld et al. 2013). Emission from hot, evolved stars contributes to and may dominate the LINER emission spectra from some galaxies (Sarzi et al. 2010). Longer wavelength observations would help further constrain the value of  $U_{min}$ , while far-infrared line ratios would help to constrain the spectral shape of the ionizing photons (e.g. Malhotra et al. 2000).

An important caveat that affects the interpretation of the

dust model parameters is that uncertainties, or intrinsic variations, in the empirical scale factors derived in Section 4.1 increase the uncertainties in the dust model parameters. As noted previously, the data shown in Figures 5 and 7 exhibits evidence for intrinsic variation in these quantities, and some variation is expected due to stellar population differences. This is particularly relevant for  $P_{7.9}$  and  $P_{24}$ , which largely determine  $q_{PAH}$  and  $\gamma$ , and so these parameters are not as well constrained as  $U_{min}$ . In practice, as  $\gamma$  is expected to be small due to the general absence of star formation in these galaxies, the biggest potential uncertainty lies with  $q_{PAH}$ .

The measured dust masses for our sample are  $M_{dust} \sim 10^{5-6.5} M_{\odot}$ , which are two or three orders of magnitude lower than the dust masses for spiral galaxies of comparable size, but similar to other early-type galaxies (Goudfrooij & de Jong 1995; Draine et al. 2007; Smith et al. 2012). The dust masses that result from this procedure are fairly robust, even though they are only based on measurements out to  $160\mu\text{m}$ . This is true even if the model parameters  $q_{PAH}$ ,  $\gamma$ , and  $U_{min}$  are not well constrained by the data because  $q_{PAH}$  has a negligible impact on the dust mass estimate and  $\gamma = 0$  is a good approximation for most galaxies. For the full range of models presented in Draine & Li (2007), we also note that the value of  $\Psi$  that is set by the best-fit model only varies from  $\sim 0.044 - 0.066 \text{ g (erg s}^{-1}\text{)}^{-1}$ . This indicates that even if the dust model were not constrained at all by the data and one simply adopted the average of this range, there would only be a  $\sim 20\%$  uncertainty in the dust mass within the context of these models. An additional uncertainty is the ISRF because the absence of flux measurements at wavelengths longer than  $160\mu\text{m}$  do not constrain a potentially substantial mass of cold dust. However, the available data can constrain the ISRF quite well because these galaxies have little star formation. Another estimate of the uncertainties comes from the overlap between several galaxies in our study and previous investigations with ISO (Xilouris et al. 2004), *Spitzer* (Temi et al. 2007), and longer-wavelength Herschel data (Smith et al. 2012; Auld et al. 2013). The dust masses derived by those previous studies assumed a modified black body and mostly agree with our estimates to within a factor of two. The noteworthy exception is NGC3945, for which Smith et al. (2012) derive over an order of magnitude larger dust mass. The difference could be ascribed to the fact that we use a smaller aperture, although our  $70\mu\text{m}$  flux is within 5% of the IRAS  $60\mu\text{m}$  value. However, due to the large uncertainty in this IRAS measurement it is still possible that we are missing extended emission from dust in this object. We may be able to put tighter constraints on the dust mass for this object with future analysis of Herschel photometry. We also note we were unable to obtain a good measurement of NGC3945 at  $160\mu\text{m}$ . We do retain NGC3945 in our sample. Another comparison was performed by Gordon et al. (2010), who found that dust masses estimated from  $\leq 160\mu\text{m}$  data can differ by 10–36% relative to dust mass estimates that include Herschel measurements at  $250\mu\text{m}$  and  $350\mu\text{m}$ , although this study was based only on the observations of the Large Magellanic Cloud and therefore does not include uncertainties due to differences in grain size and ISRF intensity distributions. Nevertheless, this study and a recent one by Aniano et al. (2012) of two, nearby spirals that also compared *Spitzer* and Herschel provides good evidence against substantial masses of cold dust.

A final uncertainty is that the physical dust model that works so well for the Milky Way may not be appropriate

for early-type galaxies, that is the size and composition are different because of different formation and processing histories. For example, sputtering can reduce the fraction of small grains relative to the initial grain size distribution. The generally smaller values of  $q_{PAH}$  in early-type galaxies relative to spirals may indicate that this is the case, although there is also allowance for this difference in the Draine & Li (2007) models. The study of four ellipticals by Kaneda et al. (2005) also provides some evidence that the shape of the radiation field is softer in ellipticals than in the Milky Way, which may not be adequately compensated by an adjustment in  $U_{min}$ . Provided all early-type galaxies are different in the same manner, then the relative dust masses we have derived here should nevertheless be robust. The true uncertainties in the dust masses are likely dominated by these model details and are difficult to quantify. Under the assumption that the dust model is a reasonably good match to early-type galaxies, we estimate that the uncertainties in the dust masses are on order a factor of two or three due to a combination of aperture differences, calibration uncertainties, and differences (or uncertainties) in the dust models.

### 5.1.3. Upper Limits

Approximately half of the galaxies in our sample are not detected at  $70\mu\text{m}$  and  $160\mu\text{m}$ . These non-detections nevertheless provide very useful constraints on the total dust mass in these galaxies because of the extraordinary sensitivity of the *Spitzer* MIPS instrument. To calculate upper limits on the dust masses in these galaxies, we employ a dust model with  $q_{PAH} = 2.50\%$ ,  $\gamma = 0$ , and  $U_{min} = 7.0$ . The values of  $q_{PAH}$  and  $U_{min}$  are representative of the galaxies with the best data (see Figure 12). We chose to use  $\gamma = 0$ , rather than the median value of  $\gamma = 0.03$ , because this leads to a more conservative constraint on the dust mass.

We use this dust model to calculate the largest value of the dust mass that is consistent with the  $3\sigma$  upper limits at  $70\mu\text{m}$  and  $160\mu\text{m}$ . These upper limits are listed in Table 3 and shown in Figures 13 and 14. The figures clearly show that the upper limits on the dust masses are approximately an order of magnitude lower than the measured dust masses.

All of these upper limits are for galaxies that show no evidence of dust lanes within 100s of parsecs of their nuclei based on our earlier *HST* study (Simões Lopes et al. 2007, and also shown in the leftmost panels of Figures 2 – 4). While the structure map technique is insensitive to uniformly distributed or very diffuse dust, the *Spitzer* data place very strong upper limits on the mass of such dust. The PAH images are also valuable in this respect, as we describe in the next subsection.

## 5.2. PAHs

As a second search for diffuse, extended dust that may not have been present in our *HST* study, we created PAH images for all of the galaxies. These images are shown in the middle panels of Figure 2 – 4. The PAH images are the  $8\mu\text{m}$  image minus a scaled version of the  $4.5\mu\text{m}$  image, where the scale factor accounts for the relative stellar emission in the two images. The calculation of the scale factor is described in §4.1. The pair of images were convolved to the same PSF prior to subtraction. All of the galaxies with dust lanes in the *HST* structure maps also have clear PAH emission, with the exception of NGC4636, which has only marginally-detected dust lanes in the *HST* data. Conversely, none of the galaxies with no evidence for dust at visible wavelengths exhibit clear



evidence of PAH emission. A number of the PAH images of the galaxies exhibit artifacts at their centers. These are consistent with artifacts of the stellar continuum subtraction, which could be caused by uncertainties in the scale factor, the PSF shape, and centroid errors.

There is a good correspondence between the morphology of the dust lanes in the *HST* data and the distribution of PAH emission for the small subset of galaxies where the *HST* data are of sufficient quality and the dust lanes sufficiently extended. Some particularly striking examples are NGC4138 and NGC4293. In a few cases the structure maps show substantial asymmetries in the dust distribution that are not mirrored in the PAH images. The most likely explanation is that the dust lanes viewed in absorption are substantially less prominent on the side of the galaxy that is tilted away from our perspective (e.g. Hubble 1943).

### 5.3. Distribution of Dust Masses

The dust mass distribution shown in Figure 13 shows that most detections have  $10^{5-6} M_{\odot}$  of dust. There are only three detections below  $10^5 M_{\odot}$  (NGC3377, NGC4550, and NGC4626), while there are many upper limits that extend an order of magnitude lower and suggest a relative absence of galaxies with  $< 10^5 M_{\odot}$  of dust. For example, if there were as many galaxies with dust masses in the range  $10^{4-5} M_{\odot}$  as in the range  $10^{5-6}$ , we would expect ten galaxies in this lower range and that we would detect half of them, yet only one is detected. This apparent dichotomy is also supported by the similar dichotomy in the detection of dust lanes in *HST* images of these galaxies (see Table 1), as we do not expect the *Spitzer* and *HST* images to have comparable dust mass sensitivity.

One possible explanation is a difference in morphological type. Figure 13 splits the detections and upper limits by morphology into ellipticals, S0s, and E/S0s. We see no evidence that true ellipticals or true S0 galaxies are more or less likely to have interstellar dust. The sensitivity of the datasets for each morphological type are also comparable. The upper limits on the dust mass in undetected ellipticals and lenticulars both span the full range of upper limits from approximately  $10^{4-5} M_{\odot}$ . We used the Astronomical Survival Analysis (ASURV) programs from Feigelson & Nelson (1985), as implemented in the IRAF STSDAS STATISTICS package, to compare the elliptical and lenticular subsamples. We ran five different tests through the *twosamp* task and these indicated that the distributions are consistent. These similar distributions are in contrast to the results of Smith et al. (2012) with the *Herschel* Reference Survey, who detected dust in 24% of ellipticals and 62% of S0s with SPIRE. This difference in detection rate between the two morphological types could be due to their larger sample of 62 early-type galaxies. Another potential explanation is that Cortese et al. (2012) and found that the dust to stellar mass ratio is lower for ellipticals than lenticulars. If our ellipticals were more massive than our lenticulars, this would also explain their similar dust masses.

We investigated if there is a correlation between dust detections or upper limits and cluster membership. Environment may correlate with the absence of dust because the hot atmospheres of clusters may lead to an increase in the rate of dust destruction, although many cluster early-type galaxies do maintain their own atmospheres (e.g. Sun et al. 2005). With regard to environment, clusters of galaxies have substantially fewer gas-rich dwarf galaxies and sufficiently high rel-

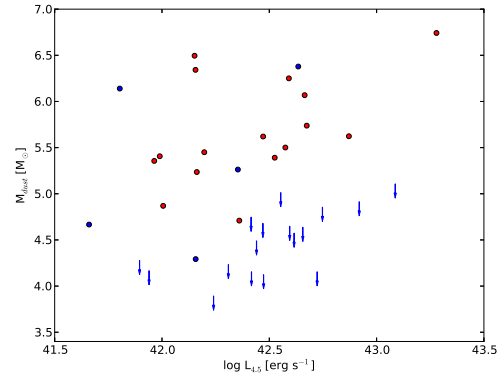


FIG. 15.— Dust mass  $M_{dust}$  vs. luminosity in at  $4.5\mu\text{m}$   $L_{4.5}$  for galaxies with good dust mass estimates (solid points) and upper limits (arrows). Active galaxies are marked with red symbols and inactive galaxies with blue symbols. The upper limits are based on the fiducial dust model described in §5.1.3 and the  $3\sigma$  upper limits on the flux at  $70\mu\text{m}$  and  $160\mu\text{m}$ .

ative velocities that mergers are more rare. We searched for differences as a function of environment, and whether or not environment could explain the dust dichotomy, with the 14 Virgo members and 27 nonmembers in our sample and detect dust in 18/27 (66.6%) nonmembers, compared to 5/14 (45.4%) Virgo members. This difference suggests a slightly larger incidence of dust in galaxies outside of Virgo, although it is not statistically significant. Smith et al. (2012) performed a similar analysis for the early-type galaxies in the *Herschel* Reference Survey and found a similar trend, but that it was also not statistically significant. We also investigated whether or not membership influenced the detection of dust in the inactive sample. We detect dust in 2 of the 11 inactive Virgo members, compared to three out of 11 of the inactive galaxies outside of Virgo. There is thus no evidence that membership in the Virgo cluster is correlated with a lower incidence of dust in inactive galaxies.

We also compared the dust detection rate with stellar luminosity, which correlates well with stellar mass. More massive galaxies generally have higher ISM temperatures, which will lead to faster dust destruction rates. This naively suggests an anticorrelation between dust mass and stellar luminosity, although no such anticorrelation is present in our data. In Figure 15 we show the dust masses and upper limits as a function of  $L_{4.5}$ , a proxy for stellar mass. While the minimum detected dust mass is a function of stellar luminosity, this is because more luminous galaxies are more rare and thus at larger distances.

The dichotomy between the dust mass estimates and upper limits thus suggests that there are distinct populations of dusty and non-dusty early-type galaxies, rather than a continuum of dust masses. To explore this possibility further, we resampled our data many times in order to determine if the apparent dichotomy is due to the sensitivity distribution of our data, rather than an intrinsically nonuniform distribution of dust masses. To perform these calculations, we estimated the minimum flux sensitivity of the  $160\mu\text{m}$  data for each galaxy. We then generated a uniform distribution in  $\log M_{dust}$ , randomly assigned dust masses from this distribution to galaxies in our sample, calculated the flux at  $160\mu\text{m}$  based on a randomly selected galaxy's distance for the dust model used to estimate upper limits, and determined if this flux would correspond to a detection or upper limit based on the sensitivity of the same galaxy's dataset. We generated 1000 realizations of

our dataset and found that the sensitivity and distance distribution of our dataset does not produce the observed dichotomy between detections and upper limits for an intrinsically uniform distribution in  $\log M_{dust}$  approximately  $\sim 95\%$  of the time.

While this is formally marginally significant, an important caveat to this statistical analysis is that it does not include variations due to the best-fit dust model, which may add a factor of two uncertainty to the dust mass, the possibility that we may systematically underestimate the dust mass by tens of percent in some cases, particularly for nearby galaxies with extended emission, and potential correlations with morphology, stellar mass, and environment. We plan to reexamine this potential dichotomy with a larger sample.

#### 5.4. Correlation with AGN

The distribution of dust masses is strikingly different for active and inactive galaxies. Galaxies classified as active, that is either LINERs or Seyferts according to Ho et al. (1997a), are all detected and have dust masses that range from  $M = 10^{5-6.5} M_{\odot}$ . In contrast, only four galaxies classified as inactive are detected and the remaining 16 have upper limits that range from  $M \sim 10^{4-5} M_{\odot}$ . This result is similar to the strong correlation between activity and the presence of dust structure within the central kpc in our earlier *HST* study (Simões Lopes et al. 2007), yet these new observations demonstrate that the galaxies without dust lanes have at least one to two orders of magnitude less dust than those with detections. As in the previous section, we used the ASURV programs from Feigelson & Nelson (1985) to compare the dust mass distributions of the active and inactive samples. All five tests available through the `twosamp` task returned zero probability that the dust masses were drawn from the same distribution.

There has been substantial discussion in the literature of the extent to which the emission lines characteristic of LINERs are actually powered by accretion onto supermassive black holes. Other proposed candidates are fast shocks, interaction with the hot phase of the ISM, and photoionization by UV emission from old stellar populations (see Ho 2008, for a review). Sarzi et al. (2010) performed a detailed analysis of emission-line ratios for many early-type galaxies and concluded that the emission-line luminosities of only a minority of LINERs are dominated by accretion. Nevertheless, AGN have been confirmed in the majority of LINERs based on measurements of radio cores, X-ray cores, and the surface brightness profiles of various emission lines relative to the stellar continuum Filho et al. (2004); Nagar et al. (2005); Filho et al. (2006); Flohic et al. (2006); Ho (2008); Sarzi et al. (2010). Some fraction of the cold ISM in the majority of these dusty early-type galaxies is therefore fueling their central, supermassive black holes, even if their emission line luminosities are not dominated by nuclear accretion. We hypothesize that the correspondence between active galaxies and dust in our sample is simply due to the presence of a sufficient quantity of cold material, some of which has accreted onto the black hole, and some of which is ionized and produces the visible-wavelength emission lines, rather than a causal relationship between the presence of dust and AGN.

## 6. ORIGIN OF THE DUST

The main motivation for this study was to use dust mass estimates for early-type galaxies to constrain the origin of their dust. Our estimates demonstrate that dusty early-type galaxies

have  $10^{5-6.5} M_{\odot}$  of dust, while the remainder have at least one order of magnitude less. Our sample is representative of the early-type galaxy population as a whole because the original selection of the sample was from the magnitude-limited Palomar Survey of Ho et al. (1995). In Simões Lopes et al. (2007), we selected an equal number of active and inactive galaxies from all of the early-type galaxies in the Palomar survey that had visible-wavelength *HST* images. Half of this sample were active galaxies and half were not, which is equivalent to the relative frequency of active and inactive galaxies in the early-type galaxy population. Simões Lopes et al. (2007) then found that all of the galaxies classified as active had dust lanes within the central kpc, whereas only 25% of the inactive galaxies had them. While we have more inactive galaxies than active galaxies in this sample, we still find that all active galaxies have interstellar dust and find a similarly small fraction (5/22 or 23%) of the inactive galaxies have dust. We therefore conclude that  $\sim 60\%$  of all early-type galaxies have dust, including all of those classified as active, and  $\sim 40\%$  do not.

The presence of dust in any early-type galaxy has long been a puzzle because thermal sputtering of dust grains in the hot ( $T > 10^6$  K) gas that comprises the bulk of their ISM should destroy dust on the timescale  $\tau_{dust} \sim 2 \times 10^4$  yr (Draine & Salpeter 1979b). These galaxies clearly do have evolved stars that produce dust, as indicated by the strong evidence for hot, circumstellar dust, and this dust must be ejected into the ISM at an approximately constant rate due to the age of their stellar populations. The expected rate of mass loss, the dust-to-gas ratio of this material, and the dust destruction timescale, can be used to estimate the steady-state dust mass of these galaxies. As noted in the Introduction, for reasonable estimates of the mass-loss rate, dust-to-gas ratio, and dust destruction time in hot gas, the steady-state dust mass should be  $10 - 100(\tau_{dust}/2 \times 10^4 \text{ yr}) M_{\odot}$ , that is none of the galaxies should have been detected.

The dust destruction timescale could be longer if the temperature of the hot phase is closer to  $10^5$  K, or if some of the gas and dust cools rapidly and settles into a cooler phase (Mathews & Brighenti 2003), although the dust destruction timescale needs to be many orders of magnitude longer to produce dust masses of  $10^5 M_{\odot}$  and above. A further complication is that this calculation predicts the expected steady-state dust mass for all early-type galaxies. As early-type galaxies form a fairly homogeneous population, all early-type galaxies should have similar dust production rates and destruction timescales. The internal origin model is consequently inconsistent with the order of magnitude differences in dust mass for similar galaxies, such as is illustrated by Figure 15.

The many galaxies with upper limits on the dust mass provide an upper limit on the typical dust destruction timescale in the hot ISM through an inversion of the argument presented above. For typical early-type galaxies, the most stringent upper limits on the dust mass are approximately  $M_{dust} < 10^{4-4.5}$ . For a continual dust production rate of  $0.1 - 1 \times 0.005 = 5 - 50 \times 10^{-4} M_{\odot} \text{ yr}^{-1}$ , the upper limit on the dust destruction timescale is:

$$\tau_{dust} < 2 \times 10^7 \left( \frac{M_{dust,lim}}{10^4} \right) \left( \frac{0.1}{\dot{M}_{gas}} \right) \left( \frac{0.005}{\epsilon_{dg}} \right) \text{ yr} \quad (5)$$

where  $M_{dust,lim}$  is the upper limit on the dust mass,  $\dot{M}_{gas}$  is the gas mass loss rate of the evolved stellar population, and  $\epsilon_{dg}$

is the dust to gas ratio. This upper limit is comparable to the value of  $\tau_{dust} < 46 \pm 25$  Myr derived by Clemens et al. (2010) with a similar argument, as well as more recent work by Smith et al. (2012). Both values are consistent with, although several orders of magnitude greater than, the calculations of Draine & Salpeter (1979b), and inconsistent with an internal origin for the one to two orders of magnitude more dust present in approximately half of the sample. As noted in the introduction, a number of previous studies have also pointed out the difficulties with a purely internal origin (Simões Lopes et al. 2007; Rowlands et al. 2012). In particular, the recent study by Smith et al. (2012) reached a similar conclusion with a similar analysis of 62 early-type galaxies observed by *Herschel*.

The alternate, and favored, hypothesis for the origin of the dust is the accretion of gas-rich satellites (e.g. Tran et al. 2001; Verdoes Kleijn & de Zeeuw 2005). The morphology of the dust lanes observed in *HST* images indicate that many of them are chaotic and clumpy and this appears inconsistent with steadily accumulation from stellar mass loss (van Dokkum & Franx 1995; Simões Lopes et al. 2007). Furthermore, when smooth dust disks are present, they do not always share the major axis of the host galaxy. Kinematic observations of atomic (Bertola et al. 1984, 1992; Sarzi et al. 2006; Morganti et al. 2006, e.g.) and molecular (Combes et al. 2007; Davis et al. 2011) gas in early-type galaxies also indicate that the gas kinematics are often not aligned with the kinematics of the stars, which further suggests an external origin.

The key challenges to the external origin hypothesis are that the merger rate of gas-rich satellites is low and the dust destruction timescale is short, yet dust is present in slightly more than half of all early-type galaxies. That is, the external origin model must satisfy the constraint:

$$f_{dust} = \mathcal{R}_{merg} \tau_{dust} \quad (6)$$

where  $f_{dust} = 0.6$  is the fraction of the population with dust above some minimum mass,  $\mathcal{R}_{merg}$  is the merger rate of gas-rich satellites that could supply sufficient dust, and  $\tau_{dust}$  is the dust destruction time. Dwarf galaxies with  $10^{5-6} M_{\odot}$  of dust (comparable in size to the Magellanic clouds) would correspond to 1 : 300 – 1 : 100 mass-ratio mergers for the galaxies in this sample. Based on the equations provided by Stewart et al. (2009), we calculate that the cumulative merger rate for mass ratios from equal mass mergers to 1 : 300 mergers is  $\mathcal{R}_{merg} = 0.07 - 0.2 \text{ Gyr}^{-1}$ , which is more than two orders of magnitude higher than our upper limit of  $\tau_{dust} < 0.02$  Gyr and more than four orders of magnitude greater than the theoretical estimate (Draine & Salpeter 1979b). These values predict  $f_{dust} < 0.0014 - 0.004$ , or a discrepancy of 150–430.

To evaluate the significance of this discrepancy, we estimate the uncertainty in both quantities. First, the merger rate we have adopted may be an overestimate because the theoretical calculations predict the merger rates for all galaxies as a function of stellar mass, yet not all satellite galaxies may have sufficient cold gas. It is also possible that the theoretical estimates underestimate the true merger rates. Observational evidence for an underestimate was presented by Lotz et al. (2011), who found that the observed merger rates are approximately a factor of five higher than the predictions of Stewart et al. (2009) and other recent, theoretical analyses. Lotz et al. (2011) posit that the disagreement between theory and observation could be because the visibility timescale for the mergers has been overestimated, or the theoretical rate has been underestimated. While the merger visibility timescale is ar-

guably more uncertain that the merger rates from simulations, this comparison indicates the merger rates are unlikely more than a factor of a few larger than the theoretical estimates. There is consequently insufficient uncertainty in the merger rates to resolve this discrepancy.

The other potential resolution is that the dust destruction timescale is actually substantially higher than both the theoretical estimate of Draine & Salpeter (1979b) and our empirical upper limit. While this requires an increase of about two orders of magnitude relative to the upper limit, the dust destruction timescale is much more uncertain than the merger rate. One reference value is the dust destruction timescale for the Milky Way  $\tau_{dust, MW} = 0.4$  Gyr, which is dominated by the impact of supernova shocks on the cold, neutral medium (Barlow & Silk 1977; Draine & Salpeter 1979a; Dwek & Scalo 1980; Jones et al. 1994). As the supernova rate in early-type galaxies is several times lower than in the Milky Way (e.g. Li et al. 2011), the dust destruction timescale may be several times larger in their cold ISM and plausibly on the order of a Gyr, provided the accreted dust does not mix with the hot ISM. This may be the case if a much larger dust destruction timescale, combined with the highest estimated merger rates, predicts a dusty fraction that is only a factor of a few below what is needed to reproduce the observations. This is plausibly within the uncertainties of these order of magnitude estimates, particularly if dust destruction is very inefficient in the cold ISM of early-type galaxies and the cold ISM does not mix efficiently with the hot phase. However, it is also plausible that the lifetime will be less because there is less cold ISM. A more precise estimate could be obtained with an analysis of the fraction of the supernova energy that impacts the cold ISM.

While it may be possible for purely external accretion to work, we instead propose that the solution is a hybrid of internal production and external accretion. When early-type galaxies accrete a gas-rich satellite, they accrete substantial amounts of both cold gas and dust. While dust will be destroyed by a combination of supernova shocks and sputtering, this destruction could be balanced by continued dust grain growth in the accreted cold ISM. While this process is not constrained by observations of early-type galaxies, many studies of the Milky Way have concluded that > 90% of dust formation by mass occurs in the cold ISM (Draine & Salpeter 1979a; Dwek & Scalo 1980; McKee 1989; Draine 2009), rather than from stellar sources such as mass loss and supernova alone (Barlow et al. 2010; Matsuura et al. 2011; Dunne et al. 2011). The Milky Way has  $M_{gas} = 5 \times 10^9 M_{\odot}$  of cold gas that produces  $M_{dust} = 2.5 \times 10^7 M_{\odot}$  per dust destruction timescale, which corresponds to a steady-state dust mass of  $\epsilon_{dg} M_{gas}$ . While the dust destruction timescale is likely different from the Milky Way value, the steady-state dust mass is likely to be within an order of magnitude of that predicted by the product of the Milky Way dust-to-gas ratio and the observed cold gas supply.

Continued dust production in the accreted cold gas removes the main weakness of the internal origin hypothesis because the mass of neutral gas in early-type galaxies varies by orders of magnitude (e.g. Welch et al. 2010), even though their stellar populations are quite similar. The hybrid solution also removes the main weakness of the external origin hypothesis because dust destruction is at least partially balanced by growth in the cold gas. As a result, the timescale that is important to explain the demographics of dust is the cold gas

depletion timescale, rather than the destruction timescale of individual grains. As the depletion timescale for the cold gas appears to be on the order of Gyr, largely due to star formation, it is sufficient to maintain substantial quantities of dust in approximately half of all early-type galaxies.

This hybrid solution leads to several testable predictions. First, the cold gas in early-type galaxies should be lower metallicity than the old stellar population, which may be accessible with gas-phase abundance measurements. Second, the dusty early-type galaxies should have cold gas to dust ratios comparable to the accreted satellite population, unless the cold gas and dust are destroyed at different rates. Finally, there should be more evidence of mergers within the last few Gyr in the dusty early-type galaxies than those that appear dust free.

Both external accretion and our hybrid solution also constrain the lifetime of the low-luminosity AGN in the dusty early-type galaxies. If the only source of the cold gas and dust that fuels the supermassive black hole is external accretion, and these accretion events only occur every few Gyr, the high incidence of AGN implies that these galaxies remain (weakly) active for several Gyr as well, while the inactive galaxies remain inactive for comparable timescales. The mass of dust, and the two orders of magnitude more cold gas in the ISM, is more than sufficient to maintain accretion rates of  $\leq 0.01 M_{\odot} \text{ yr}^{-1}$  for this time, as well as fuel the modest circumnuclear star formation necessary to produce the nuclear stellar disks seen in many dust-free early-type galaxies (e.g. Simões Lopes et al. 2007).

## 7. SUMMARY

We have analyzed the dust in a representative sample of 38 early-type galaxies and used these data to constrain the origin of their dust. This analysis is largely based on archival *Spitzer* IRAC and MIPS observations, although these galaxies also have *HST* observations that reveal the presence or absence of dust lanes in the central kpc, as well as high SNR, visible-wavelength spectroscopy that provides uniform classifications of nuclear activity.

The IRAC and MIPS observations detect emission from dust from every galaxy that exhibits dust lanes seen in absorption in *HST* observations. This dust emission is clearly due to both PAH particles, as detected with IRAC  $8\mu\text{m}$  observations, and cold, interstellar dust, as detected by MIPS observations at  $70\mu\text{m}$  and  $160\mu\text{m}$ . Conversely, galaxies that show no evidence for dust lanes in *HST* observations also do not exhibit dust emission at longer wavelengths. The absence of dust emission indicates that galaxies without clumpy dust lanes within 100s of parsecs of their centers do not have a substantial quantity of uniform, diffusely-distributed dust that would have been difficult to detect with contrast enhancement techniques.

The galaxies with no evidence for interstellar dust are a valuable sample to estimate the stellar spectral energy distribution for old stellar populations. We use these data to estimate the ratio of the stellar emission at  $8\mu\text{m}$  to that at  $3.6\mu\text{m}$  and  $4.5\mu\text{m}$ . We then use these flux ratios to scale and subtract the stellar contribution from the  $8\mu\text{m}$  band for the galaxies with interstellar dust and obtain a good estimate of the emission from PAHs in this bandpass. These flux ratios are in reasonable agreement with spectral synthesis models of old stellar populations.

We also used the galaxies without interstellar dust to estimate the ratio of the flux in the  $24\mu\text{m}$  MIPS band to

the shorter-wavelength, photospheric emission at  $3.6\mu\text{m}$  and  $4.5\mu\text{m}$ . The ratio of the  $24\mu\text{m}$  emission to these two shorter wavelength bands is fairly constant across galaxies of a wide range of luminosity, yet the ratio exceeds that expected from photospheric emission by approximately a constant factor of four. We conclude that the discrepancy is because emission from hot dust in the circumstellar envelopes of evolved stars makes a substantial contribution to the  $24\mu\text{m}$  band. We use this ratio to remove the circumstellar dust contribution from the early-type galaxies that have dust in order to study the dust properties of the interstellar medium.

A number of these galaxies have sufficient diffuse dust emission that we can determine one or more of the dust model parameters introduced by Draine & Li (2007). These are the PAH fraction  $q_{\text{PAH}}$ , the fraction of the dust heated by a strong radiation field  $\gamma$ , and the minimum starlight intensity  $U_{\text{min}}$ . The best-fit model and the far-infrared luminosity then determine the dust mass. This analysis indicates that early-type galaxies are usually well fit by the same dust models that work well for spiral galaxies. We do find evidence that early-type galaxies have slightly lower values of  $q_{\text{PAH}}$ , which may be due to the presence of primarily neutral PAHs and/or reflect low ISM metallicity. These galaxies also have lower values of  $\gamma$  and higher values of  $U_{\text{min}}$  than typical spirals.

The dust masses of these early-type galaxies are at least several orders of magnitude lower than the dust masses of spirals. The dust mass of a typical early-type galaxy detected in the far-infrared is  $10^{5-6.5} M_{\odot}$ ; however, many galaxies are undetected in the long-wavelength MIPS bands and the upper limits on the dust masses in these galaxies range up to an order of magnitude lower, or  $10^{4-5}$ . As our sample was designed to be representative of the entire early-type galaxy population, our results indicate that approximately 60% of typical early-type galaxies have  $\geq 10^5 M_{\odot}$  of interstellar dust.

There is no correlation between the presence of dust and galaxy morphology. Our sample contains approximately equal numbers of ellipticals and lenticular galaxies and the same fraction of each morphological type has interstellar dust. We also see no strong evidence for a correlation between the presence of dust and environment. There is a strong correlation between the detection of dust and the presence of visible-wavelength emission lines, which are usually consistent with some form of nuclear activity. We detect dust emission from all of the galaxies with nuclear activity, while only approximately 25% of the galaxies classified as inactive have detectable dust emission. Based on the relatively weak nuclear emission in these galaxies, we conclude that the dust, and the larger reservoir of cold gas associated with it, is a necessary but not sufficient condition for accretion onto the center, supermassive black hole.

We use our dust mass measurements and the demographics of dust in early-type galaxies to demonstrate that most of the dust mass can not originate from evolved stars. The main argument is that there are orders of magnitude variations in the dust mass between galaxies with the same morphological type and stellar mass. We also use these data to rule out an exclusively external origin for the dust. An external origin requires that the product of the merger-rate of gas-rich galaxies and the dust destruction timescale equals the fraction of dusty early-type galaxies. While many observations of dust lane morphology and gas kinematics provide strong evidence for an external origin, the observed dust masses require mergers of gas-rich galaxies that are at least an order of magnitude too

rare to explain the presence of dust in the majority of early-type galaxies. The dust destruction timescale would need to be nearly an order of magnitude greater than the Milky Way value of  $4 \times 10^8$  years, rather than the expectation that it is  $10^{4-5}$  years due to sputtering in hot gas, in order for purely external accretion to be viable.

We propose instead that the external accretion of cold gas provides an environment for the continual growth of dust for much longer than the nominal destruction timescale of individual grains. If dust grains continue to grow in mass in the externally-accreted cold medium, the reduction in the steady-state dust mass should scale with the much longer depletion timescale of the cold gas, rather than the typical destruction timescale for individual grains. In fact, continual dust grain growth in this cold gas seems inevitable, provided the conditions are similar to those that lead to dust grain growth in the Milky Way. The longer gas depletion timescale of several gigayears is consistent with the merger rates of gas-rich satellites, the morphology and kinematics of the cold dust and gas, and the distribution of dust masses. In this scenario, the

lifetime for the low-luminosity AGN present in most dusty, early-type galaxies is also comparable to this several gigayear timescale.

We thank Ramiro Simões Lopes for his assistance with the early stages of this project. We are grateful to Karin Sandstrom and the referee for many comments on the manuscript, as well as to Alison Crocker, Adam Leroy, and Craig Sarazin for helpful discussions. PM is grateful for support from the sabbatical visitor program at the North American ALMA Science Center (NAASC) at NRAO and the hospitality of both the NAASC and the University of Virginia while this work was completed. This work is based on archival data obtained with the Spitzer Space Telescope, which is operated by the Jet Propulsion Laboratory, California Institute of Technology under a contract with NASA. Support for this work was provided by an award issued by JPL/Caltech.

*Facilities:* HST, SPITZER.

## REFERENCES

- Aniano, G., Draine, B. T., Calzetti, D., Dale, D. A., Engelbracht, C. W., Gordon, K. D., Hunt, L. K., Kennicutt, R. C., Krause, O., Leroy, A. K., Rix, H.-W., Roussel, H., Sandstrom, K., Sauvage, M., Walter, F., Armus, L., Bolatto, A. D., Crocker, A., Donovan Meyer, J., Galametz, M., Helou, G., Hinz, J., Johnson, B. D., Koda, J., Montiel, E., Murphy, E. J., Skibba, R., Smith, J.-D. T., & Wolfire, M. G. 2012, *ApJ*, 756, 138
- Athey, A., Bregman, J., Bregman, J., Temi, P., & Sauvage, M. 2002, *ApJ*, 571, 272
- Auld, R. et al. 2013, *MNRAS*, 428, 1880
- Barlow, M. J. & Silk, J. 1977, *ApJ*, 211, L83
- Barlow, M. J. et al. 2010, *A&A*, 518, L138
- Bendo, G.J., et al. 2012, *AJ*, 125, 2361
- Bendo, G.J., Galliano, F., & Madden, S.C. 2012, *MNRAS*, 423, 197
- Bernard, J. P., Boulanger, F., Desert, F. X., Giard, M., Helou, G., & Puget, J. L. 1994, *A&A*, 291, L5
- Bertola, F., Bettoni, D., Rusconi, L., & Sedmak, G. 1984, *AJ*, 89, 356
- Bertola, F., Buson, L. M., & Zeilinger, W. W. 1992, *ApJ*, 401, L79
- Bregman, J. N., Snider, B. A., Grego, L., & Cox, C. V. 1998, *ApJ*, 499, 670
- Bressan, A., Granato, G. L., & Silva, L. 1998, *A&A*, 332, 135
- Bressan, A., Panuzzo, P., Silva, L., Buson, L., Clemens, M., Granato, G. L., Rampazzo, R., Valdes, J. R., & Vega, O. 2007, in *Astronomical Society of the Pacific Conference Series*, Vol. 374, *From Stars to Galaxies: Building the Pieces to Build Up the Universe*, ed. A. Vallenari, R. Tantaló, L. Portinari, & A. Moretti, 333
- Clemens, M. S., Jones, A. P., Bressan, A., Baes, M., Bendo, G. J., Bianchi, S., Bomans, D. J., Boselli, A., Corbelli, E., Cortese, L., Dariush, A., Davies, J. I., de Looze, I., di Serego Alighieri, S., Fadda, D., Fritz, J., Garcia-Appadoo, D. A., Gavazzi, G., Giovanardi, C., Grossi, M., Hughes, T. M., Hunt, L. K., Madden, S., Pierini, D., Pohlen, M., Sabatini, S., Smith, M. W. L., Verstappen, J., Vlahakis, C., Xilouris, E. M., & Zibetti, S. 2010, *A&A*, 518, L50
- Combes, F., Young, L. M., & Bureau, M. 2007, *MNRAS*, 377, 1795
- Conroy, C., Gunn, J. E., & White, M. 2009, *ApJ*, 699, 486
- Cortese, L. et al. 2012, *A&A*, 540, 52
- Davis, T. A., Alatalo, K., Sarzi, M., Bureau, M., Young, L. M., Blitz, L., Serra, P., Crocker, A. F., Krajnović, D., McDermid, R. M., Bois, M., Bournaud, F., Cappellari, M., Davies, R. L., Duc, P.-A., de Zeeuw, P. T., Emsellem, E., Khochfar, S., Kuntschner, H., Lablanche, P.-Y., Morganti, R., Naab, T., Oosterloo, T., Scott, N., & Weijmans, A.-M. 2011, *MNRAS*, 417, 882
- Draine, B. T. 2009, in *Astronomical Society of the Pacific Conference Series*, Vol. 414, *Cosmic Dust - Near and Far*, ed. T. Henning, E. Grün, & J. Steinacker, 453
- Draine, B. T., Dale, D. A., Bendo, G., Gordon, K. D., Smith, J. D. T., Armus, L., Engelbracht, C. W., Helou, G., Kennicutt, Jr., R. C., Li, A., Roussel, H., Walter, F., Calzetti, D., Moustakas, J., Murphy, E. J., Rieke, G. H., Bot, C., Hollenbach, D. J., Sheth, K., & Teplitz, H. I. 2007, *ApJ*, 663, 866
- Draine, B. T. & Li, A. 2007, *ApJ*, 657, 810
- Draine, B. T. & Salpeter, E. E. 1979a, *ApJ*, 231, 438
- . 1979b, *ApJ*, 231, 77
- Dunne, L. et al. 2011, *MNRAS*, 417, 1510
- Dwek, E. & Scalo, J. M. 1980, *ApJ*, 239, 193
- Feigelson, E. D., & Nelson, P. I. 1985, *ApJ*, 293, 192
- Filho, M. E., Barthel, P. D., & Ho, L. C. 2006, *A&A*, 451, 71
- Filho, M. E., Fraternali, F., Markoff, S., Nagar, N. M., Barthel, P. D., Ho, L. C., & Yuan, F. 2004, *A&A*, 418, 429
- Finkbeiner, D. P., Davis, M., & Schlegel, D. J. 1999, *ApJ*, 524, 867
- Flohic, H. M. L. G., Eracleous, M., Chartas, G., Shields, J. C., & Moran, E. C. 2006, *ApJ*, 647, 140
- Frayer, D.T. et al. 2009, *ApJ*, 138, 1261
- Gomez, H.L. et al. 2010, *A&A*, 518, L45
- Gordon, K. D., Galliano, F., Hony, S., Bernard, J.-P., Bolatto, A., Bot, C., Engelbracht, C., Hughes, A., Israel, F. P., Kemper, F., Kim, S., Li, A., Madden, S. C., Matsuura, M., Meixner, M., Misselt, K., Okumura, K., Panuzzo, P., Rubio, M., Reach, W. T., Roman-Duval, J., Sauvage, M., Skibba, R., & Tielens, A. G. G. M. 2010, *A&A*, 518, L89
- Gordon, K. D., Misselt, K. A., Witt, A. N., & Clayton, G. C. 2001, *ApJ*, 551, 269
- Goudfrooij, P. & de Jong, T. 1995, *A&A*, 298, 784
- Groves, B., Krause, O., Sandstrom, K., Schmedeke, A., Leroy, A., Linz, H., Kapala, M., Rix, H.-W., Schinnerer, E., Tabatabaei, F., Walter, F., & da Cunha, E. 2012, *ArXiv e-prints*
- Helou, G., Roussel, H., Appleton, P., Frayer, D., Stolovy, S., Storrie-Lombardi, L., Hurt, R., Lowrance, P., Makovoz, D., Masci, F., Surace, J., Gordon, K. D., Alonso-Herrero, A., Engelbracht, C. W., Misselt, K., Rieke, G., Rieke, M., Willner, S. P., Pahre, M., Ashby, M. L. N., Fazio, G. G., & Smith, H. A. 2004, *ApJS*, 154, 253
- Ho, L. C. 2008, *ARA&A*, 46, 475
- Ho, L. C., Filippenko, A. V., & Sargent, W. L. 1995, *ApJS*, 98, 477
- Ho, L. C., Filippenko, A. V., & Sargent, W. L. W. 1997a, *ApJS*, 112, 315+
- Ho, L. C., Filippenko, A. V., Sargent, W. L. W., & Peng, C. Y. 1997b, *ApJS*, 112, 391+
- Hubble, E. 1943, *ApJ*, 97, 112
- Hunt, L. K., Giovanardi, C., & Helou, G. 2002, *A&A*, 394, 873
- Joblin, C., D'Hendecourt, L., Leger, A., & Defourneau, D. 1994, *A&A*, 281, 923
- Jones, A. P., Tielens, A. G. G. M., Hollenbach, D. J., & McKee, C. F. 1994, *ApJ*, 433, 797
- Jura, M., Kim, D. W., Knapp, G. R., & Guhathakurta, P. 1987, *ApJ*, 312, L11
- Kaneda, H., Onaka, T., & Sakon, I. 2005, *ApJ*, 632, L83
- Knapp, G. R., Guhathakurta, P., Kim, D.-W., & Jura, M. A. 1989, *ApJS*, 70, 329
- Knapp, G. R., Gunn, J. E., & Wynn-Williams, C. G. 1992, *ApJ*, 399, 76
- Lauer, T. R., Faber, S. M., Gebhardt, K., Richstone, D., Tremaine, S., Ajhar, E. A., Aller, M. C., Bender, R., Dressler, A., Filippenko, A. V., Green, R., Grillmair, C. J., Ho, L. C., Kormendy, J., Magorrian, J., Pinkney, J., & Siopis, C. 2005, *AJ*, 129, 2138
- Lebzelter, T., Posch, T., Hinkle, K., Wood, P. R., & Bouwman, J. 2006, *ApJ*, 653, L145

- Leitherer, C., Schaerer, D., Goldader, J. D., González Delgado, R. M., Robert, C., Kune, D. F., de Mello, D. F., Devost, D., & Heckman, T. M. 1999, *ApJS*, 123, 3
- Li, W., Chornock, R., Leaman, J., Filippenko, A. V., Poznanski, D., Wang, X., Ganeshalingam, M., & Mannucci, F. 2011, *MNRAS*, 412, 1473
- Lotz, J. M., Jonsson, P., Cox, T. J., Croton, D., Primack, J. R., Somerville, R. S., & Stewart, K. 2011, *ApJ*, 742, 103
- Lutz, D., Sturm, E., Tacconi, L. J., Valiante, E., Schweitzer, M., Netzer, H., Maiolino, R., Andreani, P., Shemmer, O., & Veilleux, S. 2008, *ApJ*, 684, 853
- Malhotra, S., Hollenbach, D., Helou, G., Silbermann, N., Valjavec, E., Rubin, R. H., Dale, D., Hunter, D., Lu, N., Lord, S., Dinerstein, H., & Thronson, H. 2000, *ApJ*, 543, 634
- Maraston, C. 2005, *MNRAS*, 362, 799
- Mathews, W. G. & Brighenti, F. 2003, *ApJ*, 590, L5
- Matsuura, M. et al. 2011, *Science*, 333, 1258
- Mathis, J. S., Mezger, P. G., & Panagia, N. 1983, *A&A*, 128, 212
- McKee, C. 1989, in *IAU Symposium*, Vol. 135, *Interstellar Dust*, ed. L. J. Allamandola & A. G. G. M. Tielens, 431
- Micelotta, E. R., Jones, A. P., & Tielens, A. G. G. M. 2010, *A&A*, 510, A37
- Morganti, R., de Zeeuw, P. T., Oosterloo, T. A., McDermid, R. M., Krajnović, D., Cappellari, M., Kenn, F., Weijmans, A., & Sarzi, M. 2006, *MNRAS*, 371, 157
- Nagar, N. M., Falcke, H., & Wilson, A. S. 2005, *A&A*, 435, 521
- Piovan, L., Tantaló, R., & Chiosi, C. 2003, *A&A*, 408, 559
- . 2006, *MNRAS*, 370, 1454
- Pogge, R. W. & Martini, P. 2002, *ApJ*, 569, 624
- Popescu, C. C., Misiriotis, A., Kylafis, N. D., Tuffs, R. J., & Fischera, J. 2000, *A&A*, 362, 138
- Ravindranath, S., Ho, L. C., Peng, C. Y., Filippenko, A. V., & Sargent, W. L. W. 2001, *AJ*, 122, 653
- Rowlands, K. et al. 2012, *MNRAS*, 419, 2545
- Sarzi, M., Falcón-Barroso, J., Davies, R. L., Bacon, R., Bureau, M., Cappellari, M., de Zeeuw, P. T., Emsellem, E., Fathi, K., Krajnović, D., Kuntschner, H., McDermid, R. M., & Peletier, R. F. 2006, *MNRAS*, 366, 1151
- Sarzi, M., Shields, J. C., Schawinski, K., Jeong, H., Shapiro, K., Bacon, R., Bureau, M., Cappellari, M., Davies, R. L., de Zeeuw, P. T., Emsellem, E., Falcón-Barroso, J., Krajnović, D., Kuntschner, H., McDermid, R. M., Peletier, R. F., van den Bosch, R. C. E., van de Ven, G., & Yi, S. K. 2010, *MNRAS*, 402, 2187
- Schutte, W. A., Tielens, A. G. G. M., & Allamandola, L. J. 1993, *ApJ*, 415, 397
- Sellgren, K. 1984, *ApJ*, 277, 623
- Simões Lopes, R. D., Storchi-Bergmann, T., de Fátima Saraiva, M., & Martini, P. 2007, *ApJ*, 655, 718
- Skibba et al. 2011, *ApJ*, 738, 89
- Smith, J. D. T., Draine, B. T., Dale, D. A., Moustakas, J., Kennicutt, Jr., R. C., Helou, G., Armus, L., Roussel, H., Sheth, K., Bendo, G. J., Buckalew, B. A., Calzetti, D., Engelbracht, C. W., Gordon, K. D., Hollenbach, D. J., Li, A., Malhotra, S., Murphy, E. J., & Walter, F. 2007, *ApJ*, 656, 770
- Smith, M. W. L., Gomez, H. L., Eales, S. A., Ciesla, L., Boselli, A., Cortese, L., Bendo, G. J., Baes, M., Bianchi, S., Clemens, M., Clements, D. L., Cooray, A. R., Davies, J. I., de Looze, I., di Serego Alighieri, S., Fritz, J., Gavazzi, G., Gear, W. K., Madden, S., Mentuch, E., Panuzzo, P., Pohlen, M., Spinoglio, L., Verstappen, J., Vlahakis, C., Wilson, C. D., & Xilouris, E. M. 2012, *ApJ*, 748, 123
- Stewart, K. R., Bullock, J. S., Barton, E. J., & Wechsler, R. H. 2009, *ApJ*, 702, 1005
- Suh, K.-W. 2002, *MNRAS*, 332, 513
- Sun, M., Vikhlinin, A., Forman, W., Jones, C., & Murray, S. S. 2005, *ApJ*, 619, 169
- Temi, P., Brighenti, F., Mathews, W. G., & Bregman, J. D. 2004, *ApJS*, 151, 237
- Temi, P., Brighenti, F., & Mathews, W. G. 2007, *ApJ*, 660, 1215
- Temi, P., Brighenti, F., & Mathews, W. G. 2009, *ApJ*, 707, 890
- Tran, H. D., Tsvetanov, Z., Ford, H. C., Davies, J., Jaffe, W., van den Bosch, F. C., & Rest, A. 2001, *AJ*, 121, 2928
- Tsai, J. C. & Mathews, W. G. 1995, *ApJ*, 448, 84
- van Dokkum, P. G. & Franx, M. 1995, *AJ*, 110, 2027
- Verdoes Kleijn, G. A. & de Zeeuw, P. T. 2005, *A&A*, 435, 43
- Welch, G. A., Sage, L. J., & Young, L. M. 2010, *ApJ*, 725, 100
- Xilouris, E. M., Madden, S. C., Galliano, F., Vigroux, L., & Sauvage, M. 2004, *A&A*, 416, 41
- Young, L. M., Bureau, M., Davis, T. A., Combes, F., McDermid, R. M., Alatalo, K., Blitz, L., Bois, M., Bournaud, F., Cappellari, M., Davies, R. L., de Zeeuw, P. T., Emsellem, E., Khochfar, S., Krajnović, D., Kuntschner, H., Lablanche, P.-Y., Morganti, R., Naab, T., Oosterloo, T., Sarzi, M., Scott, N., Serra, P., & Weijmans, A.-M. 2011, *MNRAS*, 414, 940