

# Vintage Lane Observatory

+173 50 20.72E

-41 29 36.27

37.50m



AUCKLAND

NORTH ISLAND

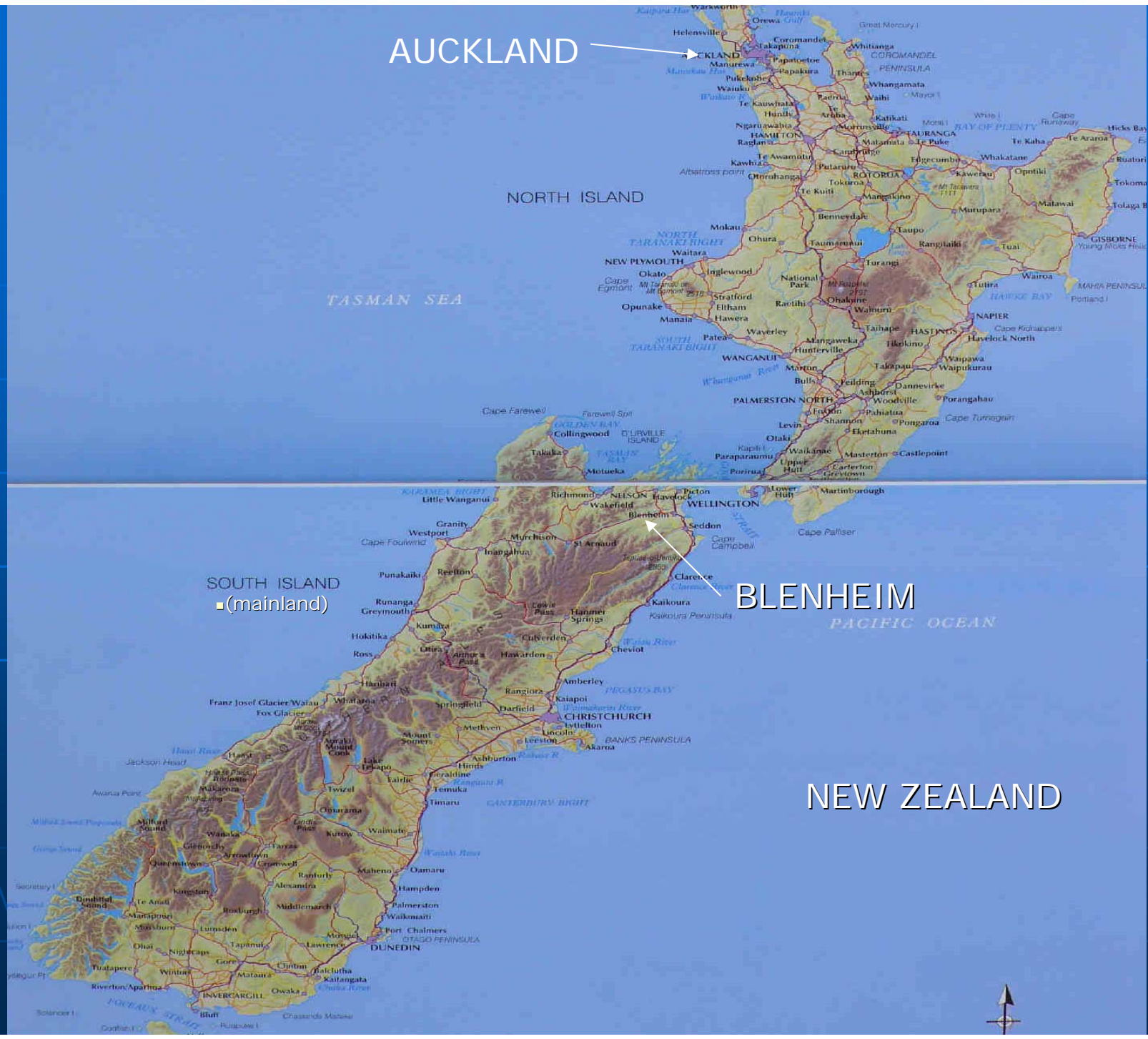
TASMAN SEA

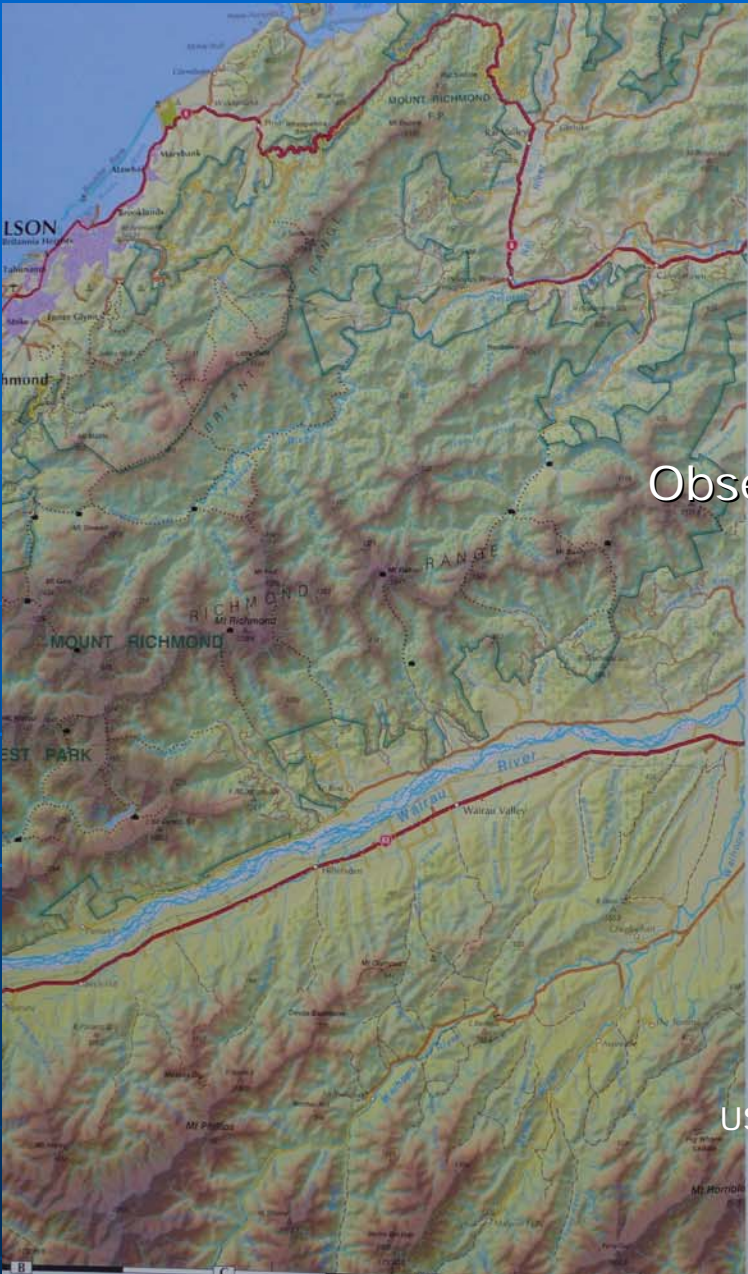
SOUTH ISLAND  
■ (mainland)

BLENHEIM

PACIFIC OCEAN

NEW ZEALAND



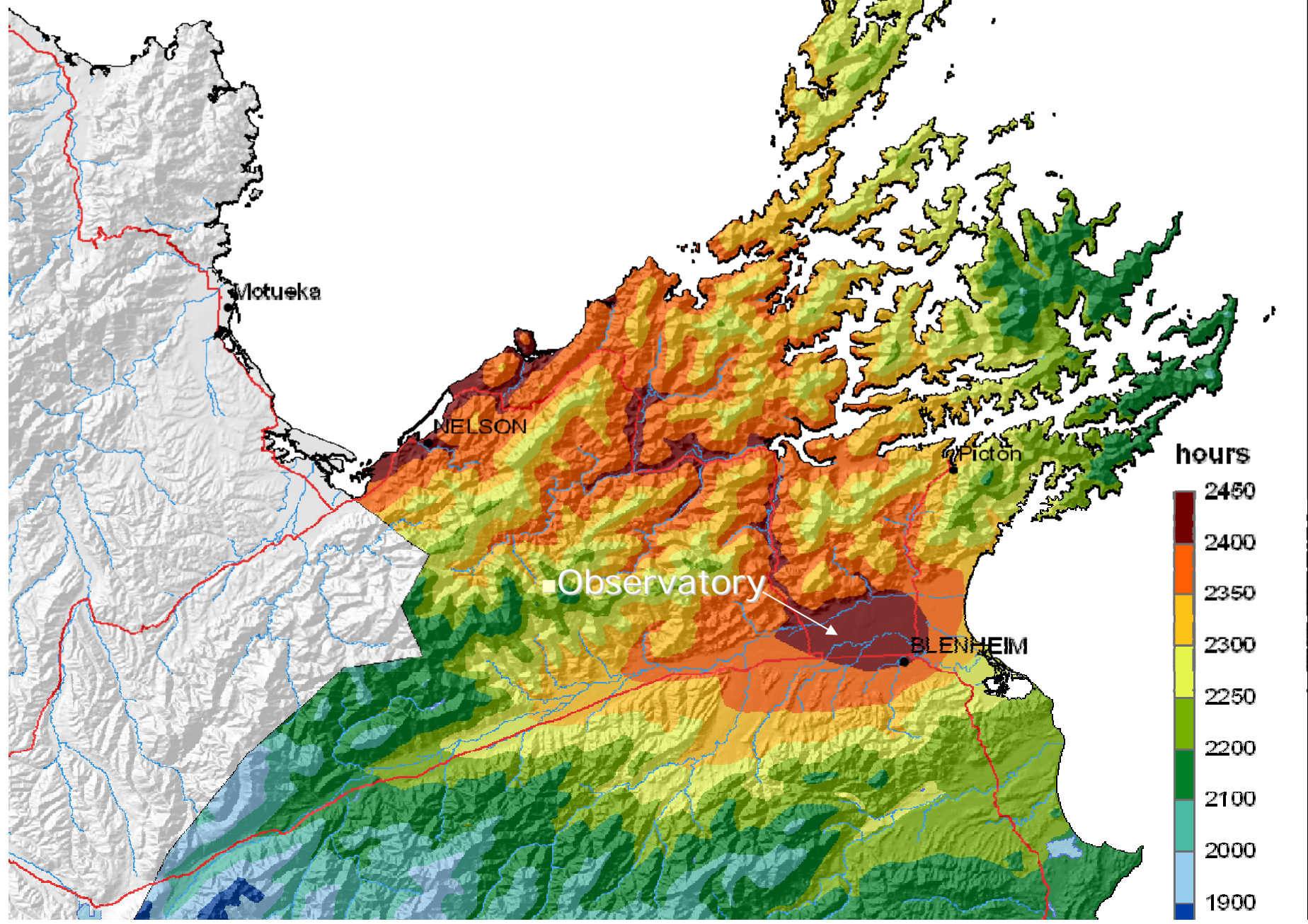


Observatory

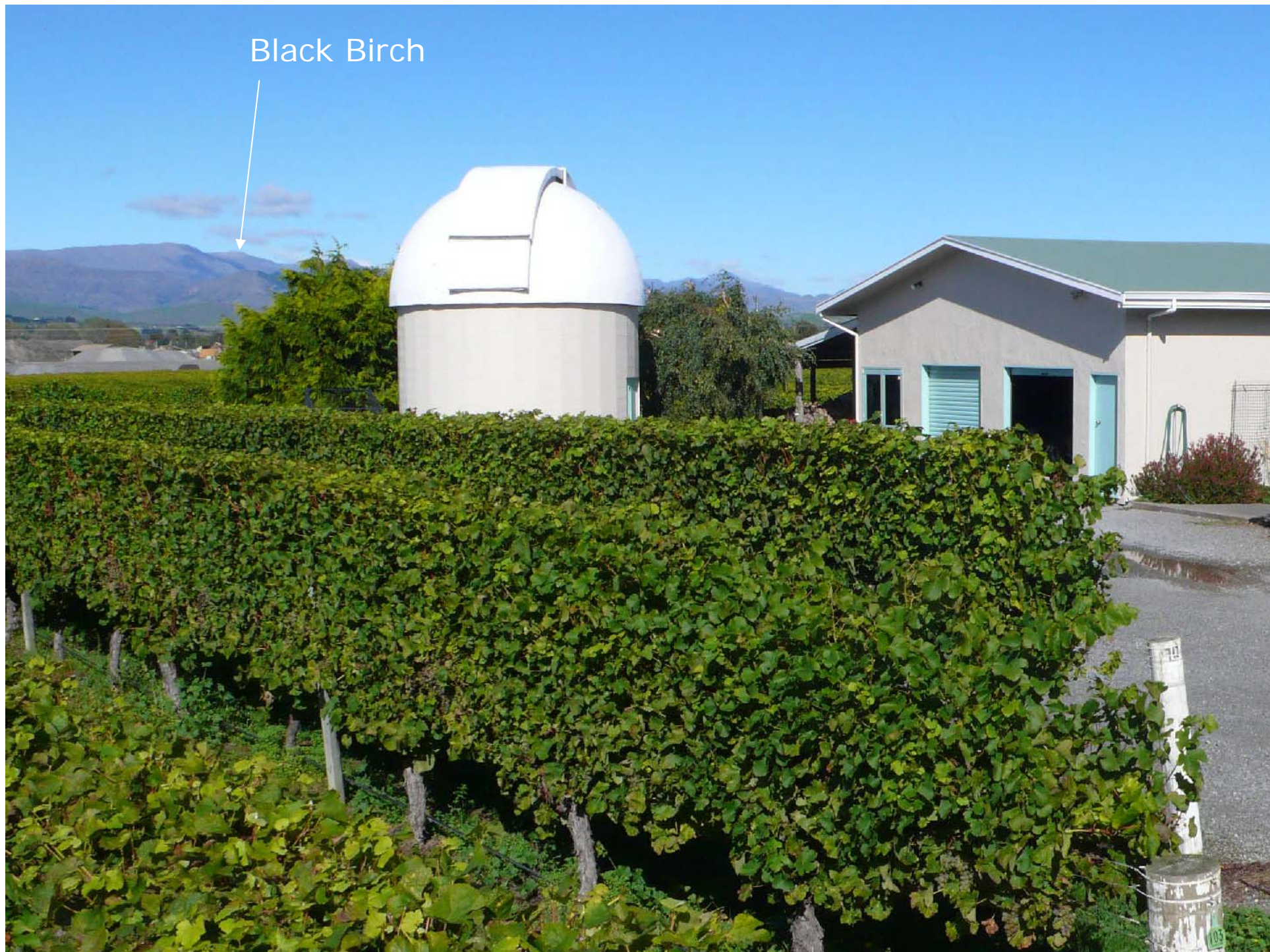
BLENHEIM

USNO

# Nelson - Marlborough Median Annual Sunshine Hours



Black Birch





40 cm f15 Cassegrain





Master DL 4 - v005113 31 Aug 2009 001C.BI

File Edit View Analysis Process Filter Color Plugins Window Help

100%

31 Aug 2009 001C.BI

001C.BI

**Master CCD**

Expos | Settings | Transmitt | Focus | Image | Scale | Setup

Advanced Features

Auto Cal 1.0 Dec 2009

Status: Status Time Code

0 0.0

Full Image Size

Camera On Full Frame

**Telescope Control**

Telescope | Catalog | Data | Focus | Autostar | Setup

RA: 19h 35m 25s Dec: 47° 26' 52"

Target Coordinates

RA: [ ] [ ] [ ]

Dec: [ ] [ ] [ ]

Take Image Exposure

Go To [ ] [ ] [ ] [ ] [ ] [ ]

**POBI Handset**

LST 11 30 34 Shutter [ ] [ ] [ ]

RA 11 33 45 Az [ ] [ ] [ ]

Dec -41 29 00

Az 270 14 54

Alt 60 05 14

Start Scope [ ] [ ] [ ] [ ] [ ] [ ]

Track [ ] [ ] [ ] [ ] [ ] [ ]

Show Drive [ ] [ ] [ ] [ ] [ ] [ ]

Control Drive [ ] [ ] [ ] [ ] [ ] [ ]

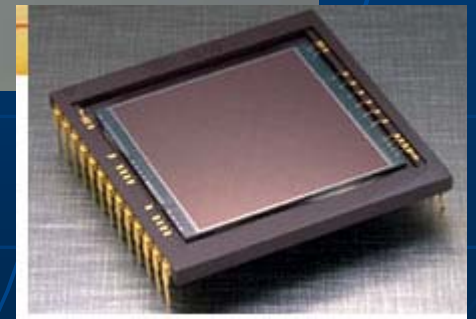
Traffic [ ] [ ] [ ] [ ] [ ] [ ]

Start [ ] [ ] [ ] [ ] [ ] [ ]

Master DL 4 - v005113 POBI Handset My Documents 6:35 a.m.



SBIG STL 1001E



magnitude of lens 16.62

*ob08513*

Sum of five 10 second images  
2008 09 07





SEQUENCE U,B,U

WAITING FOR FILTER U \*\*\*

1.06	7724.70192
1.11	7728.31619
1.16	7738.75074

AVERAGE = 7730.58962

STANDARD DEV OF MEAN=4.20956755

QUALITY FACTOR=0

SIGMAG=.591040016

WAITING FOR FILTER B \*\*\*

1.25	7766.66472
------	------------

WAITING...

MASTER 2008

VARIABLE STAR REDUCTION PROGRAMME (with error calculations)

Variable	Eta Carina	Catalog	Spec	V	B-V	U-B	Averages			
Comp A	HD93010	RoB 64	B3III	6.390	0.000	-0.56	V	B	U	
Comp B	HD93502	RoB 64	A0IV	6.250	0.040	0.04	Sky	105	226	75
Variable/comp A	Eta Car	measured	uncorrected	5.053	0.550	-0.50	Comp A	2452	8280	2879
Variable/comp B	Eta Car	measured	uncorrected	5.028	0.571	-0.35	Eta Car	8147	16860	5564
Variable	Dec	59.4167	degrees	Voltage	1100		Comp B	2715	9028	2100
Variable	RA	10.7183	hours	Diaphragm	60		Ave(B-A)	264	748	-779

Date UT 29 Nov 770.5

Time UT

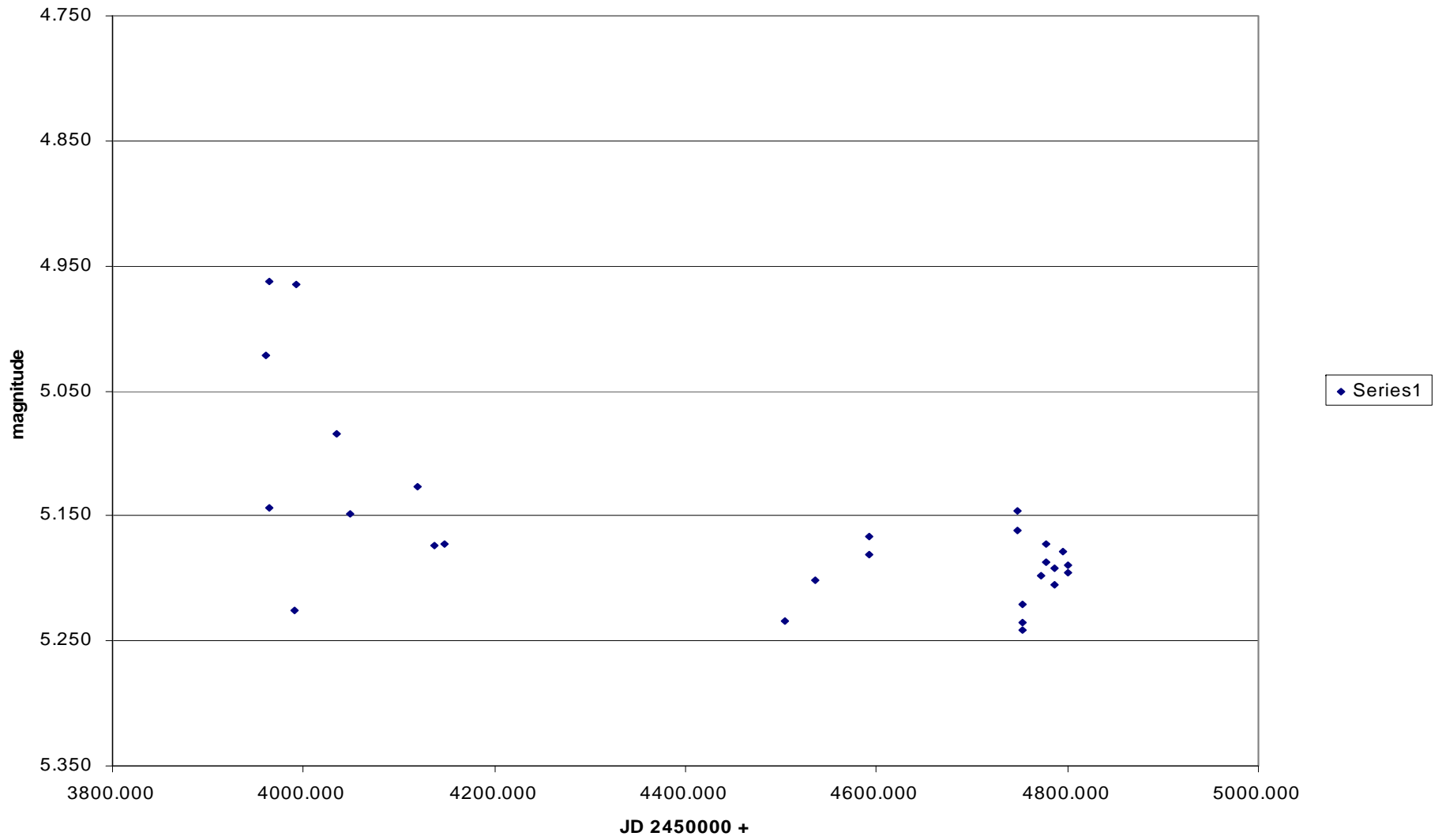
Object	Hours	Minutes	V	B	U	time	AM	JD	V	B-V	U-B	
sky	13	10	101	217	73	hours		2454000 +				
Comp A	13	14	2474	8314	2833	13.23	1.68					
Comp A	13	15	2464	8175	2850	13.25	1.67					
Comp A	13	17	2454	8300	2872	13.28	1.66					
Var	13	20	8171	16695	5430	13.33	1.65	Uncorrected	5.040	0.560	-0.427	
Var	13	22	8086	16595	5465	13.37	1.64	Corrected	800.059	5.039	0.652	-0.496
Var	13	23	8226	16998	5588	13.38	1.64					
Comp B	13	27	2703	8919	2070	13.45	1.62		V	5.039		
Comp B	13	29	2726	9050	2107	13.48	1.62	Comments	B	5.691		
Comp B	13	30	2716	9114	2122	13.50	1.61		U	5.194		
Var	13	34	8079	16784	5578	13.57	1.60	Telescope	40cm			
Var	13	35	8120	16995	5630	13.58	1.59	Wind	Nil			
Var	13	37	8199	17094	5695	13.62	1.59	Moon	Nil			
Comp A	13	40	2429	8258	2917	13.67	1.58	Transparency	VG			
Comp A	13	42	2451	8391	2912	13.70	1.57	Seeing	VG			
Comp A	13	44	2437	8242	2887	13.73	1.56	Temp at start	16.8			
Sky	13	47	109	234	77			QF	1			
						Comp A	Comp B	Ave	Altitude	39.8	13:38	1.6

Transform Coefficients	eta	0.0831	V	5.053	5.025	5.04
May 3 2008	mu	1.1636	B-V	0.640	0.664	0.65
	psi	1.1623	U-B	-0.584	-0.409	-0.50

delta	V-v	B-b	U-u	v	b-v	u-b
variable/comp A	-1.337	-0.787	-0.730	-1.337	0.550	0.058
Variable/comp B	-1.222	-0.691	-1.083	-1.222	0.531	-0.392
				-1.280	0.540	-0.167

Average uncorrected differentials

**Eta Car U filter  
PMT Observations  
from Aug 12 2006**





Eta Carina  
U Filter

