

a Essentials of running an active and successful research program

Altaf Wani, Ph.D.

The Ohio State University

LEAP Workshop at OSU

September 8-15, 2019

Background

Personal, Professional

Program

Foundational Research

-Idea

-Launch and Manage
funding, personnel

Persevere, Produce, collaborate

Interactions

Local, national, international

Challenges

Reviewers, peers, personalities

Rewards

Mentorship, mentees, results, impact

Peer appreciation

Background

Personal, Professional

Background

Personal, Professional

Program

Foundational Research

- Idea

- Launch and Manage

 - funding, personnel

Persevere, Produce, collaborate

Background

Personal, Professional

Program

Foundational Research

- Idea

- Launch and Manage

funding, personnel

Persevere, Produce, collaborate

Interactions

Local, national, international

Background

Personal, Professional

Program

Foundational Research

- Idea

- Launch and Manage
funding, personnel

Persevere, Produce, collaborate

Interactions

Local, national, international

Challenges

Reviewers, peers, personalities

Background

Personal, Professional

Program

Foundational Research

-Idea

-Launch and Manage
funding, personnel

Persevere, Produce, collaborate

Interactions

Local, national, international

Challenges

Reviewers, peers, personalities

Rewards

Mentorship, mentees, results, impact

Peer appreciation

Background

Personal, Professional

Program

Foundational Research

-Idea

-Launch and Manage
funding, personnel

Persevere, Produce, collaborate

Interactions

Local, national, international

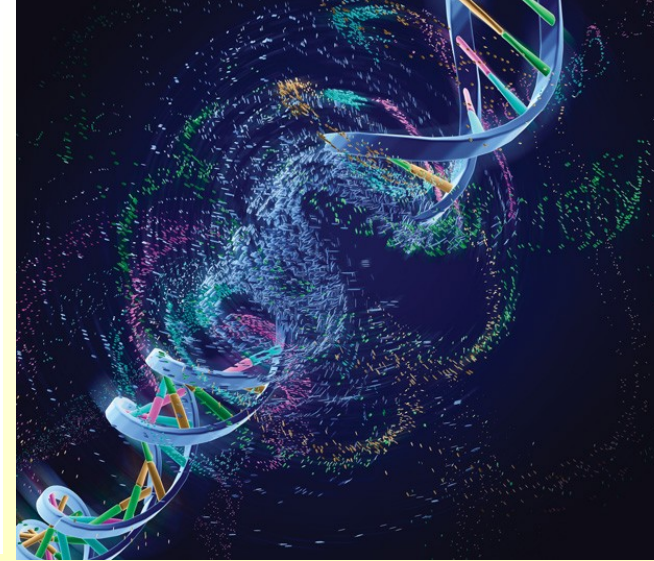
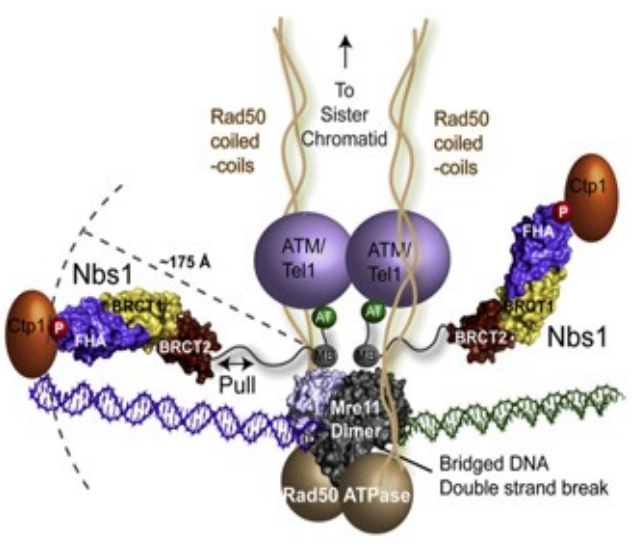
Challenges

Reviewers, peers, personalities

Rewards

Mentorship, mentees, results, impact

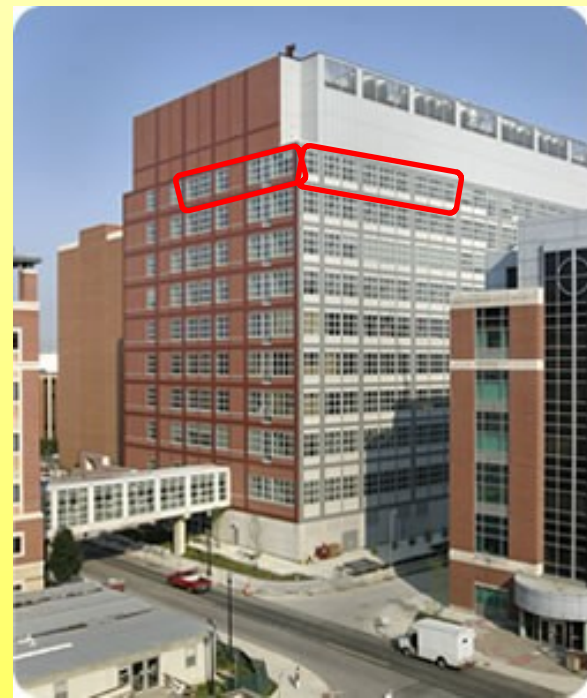
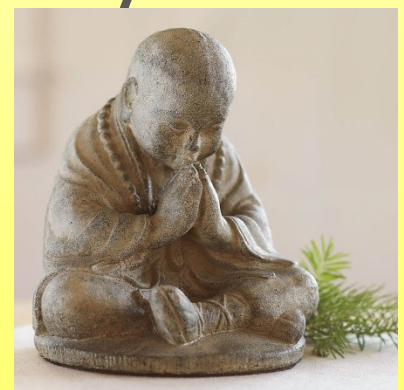
Peer appreciation



Acknowledgements

Many thanks

\$\$\$- NIH

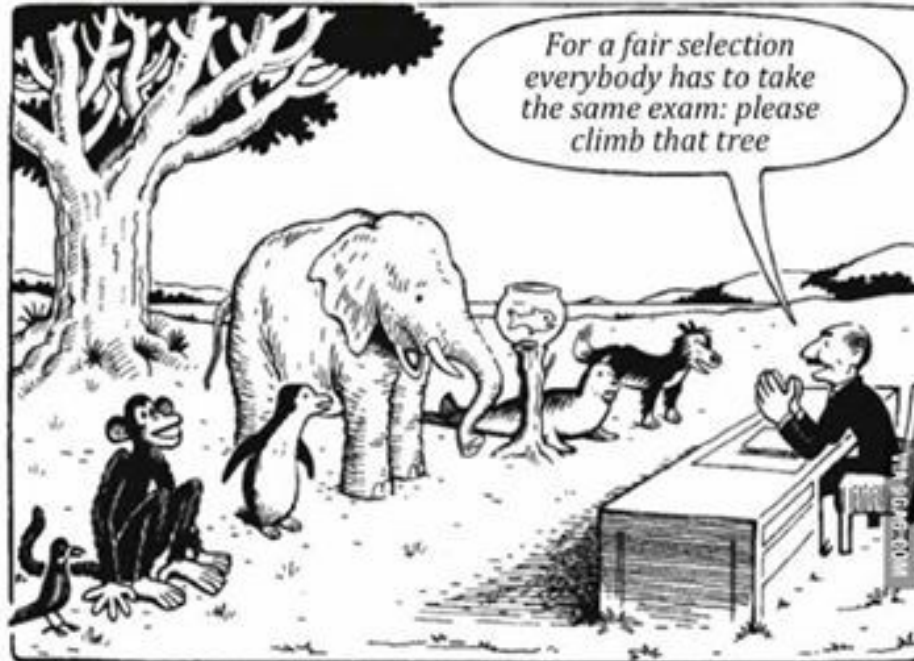






Thanks!

Thanks



Our Education System

"Everybody is a genius. But if you judge a fish by its ability to climb a tree, it will live its whole life believing that it is stupid."

- Albert Einstein

Correcting the Blueprint of life

