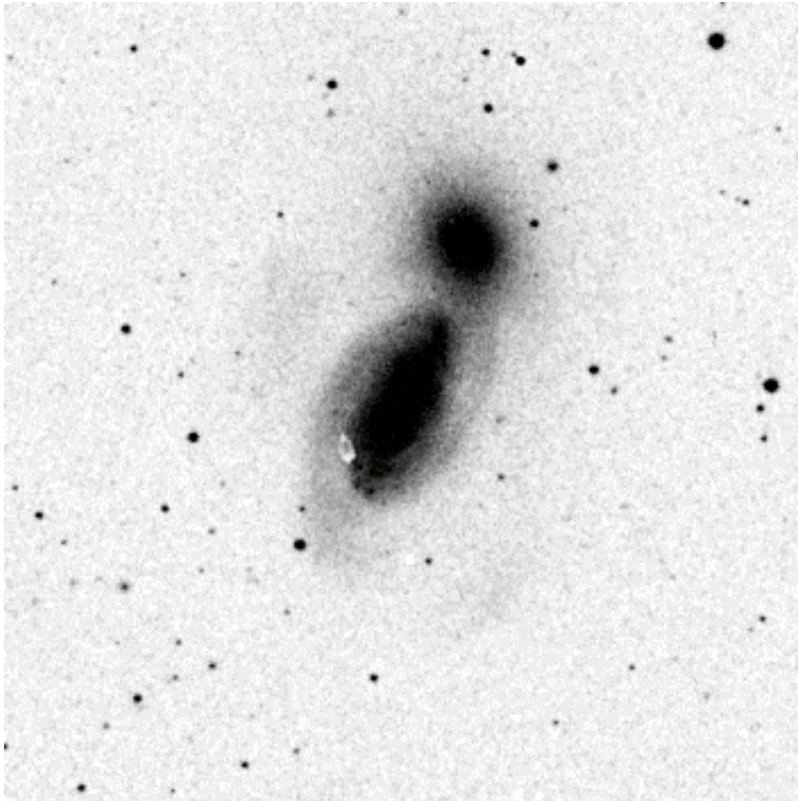


Finding Charts for Reverberation Mapping Targets

- All positions and charts are from NED.
- Positions are epoch 2000.0
- Charts are from DSS.
 - Each field is 10 arcmin \times 10 arcmin, source at exact center of field
 - North is up, East is to left.
- Compiled by Brad Peterson
 - Version 2 (5 March 2003)

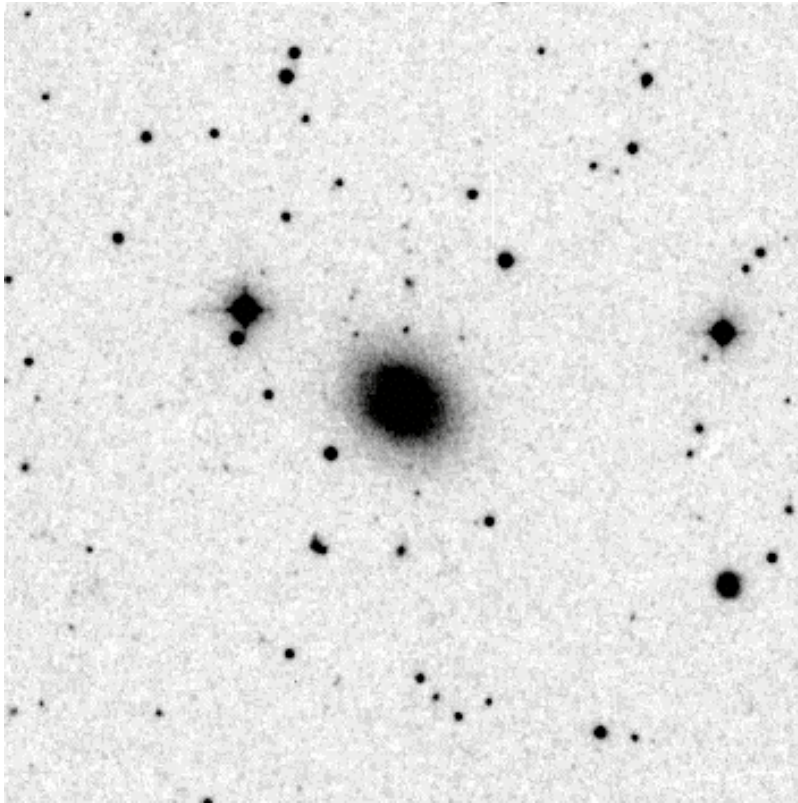
NGC 3227: Primary Target



- $\alpha_{2000} = 10:23:30.6$
- $\delta_{2000} = 19:51:54$
- 6.5×4.5 arcmin
- Type Sb
- Guidestar(s):

	X	Y
	15700	16500
(better)	19700	12500

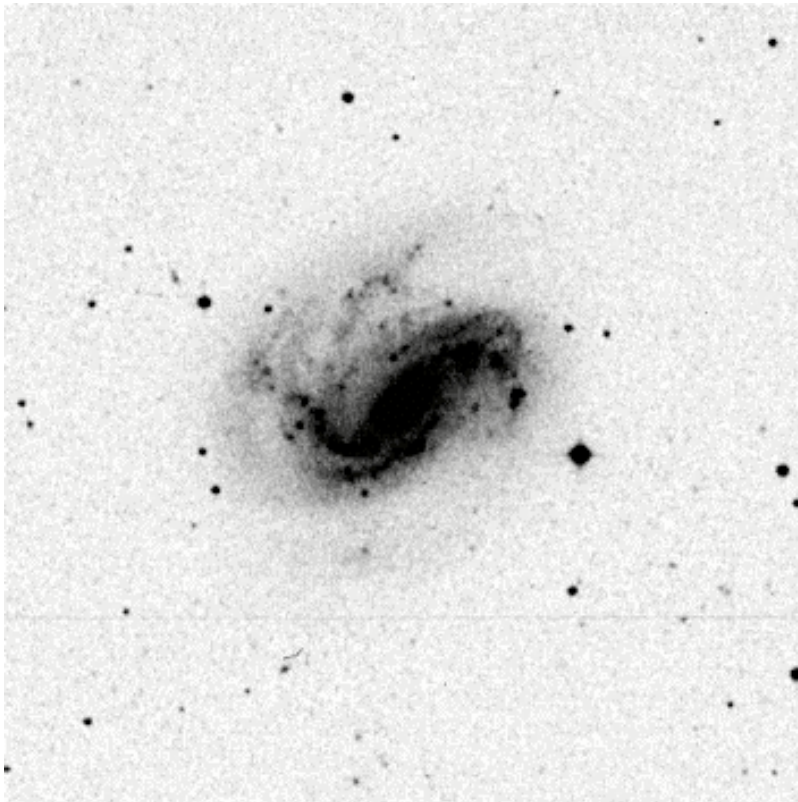
NGC 3516: Primary Target



- $\alpha_{2000} = 11:06:47.49$
- $\delta_{2000} = 72:34:06.88$
- 1.7×1.3 arcmin
- Guidestar(s):

	X	Y
Bright:	5000	11000

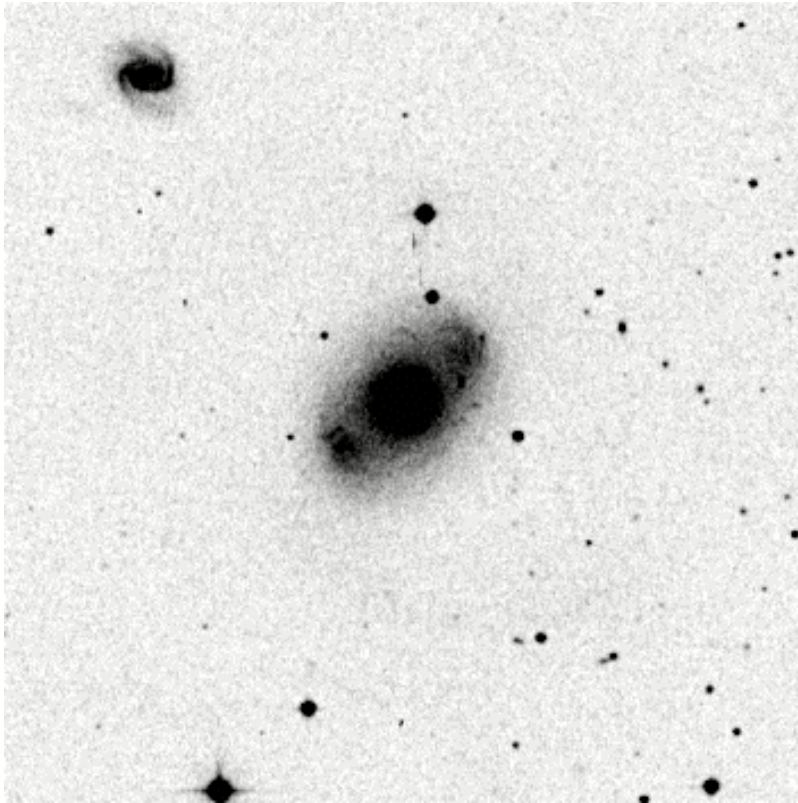
NGC 4051: Secondary Target



- $\alpha_{2000} = 12:03:09.6$
- $\delta_{2000} = 44:31:53$
- 6.0×5.0 arcmin
- Type Sb/SBc
- Guidestar(s):

	X	Y
Bright:	8000	6000
<u>Use this 1st:</u>	12000	8000

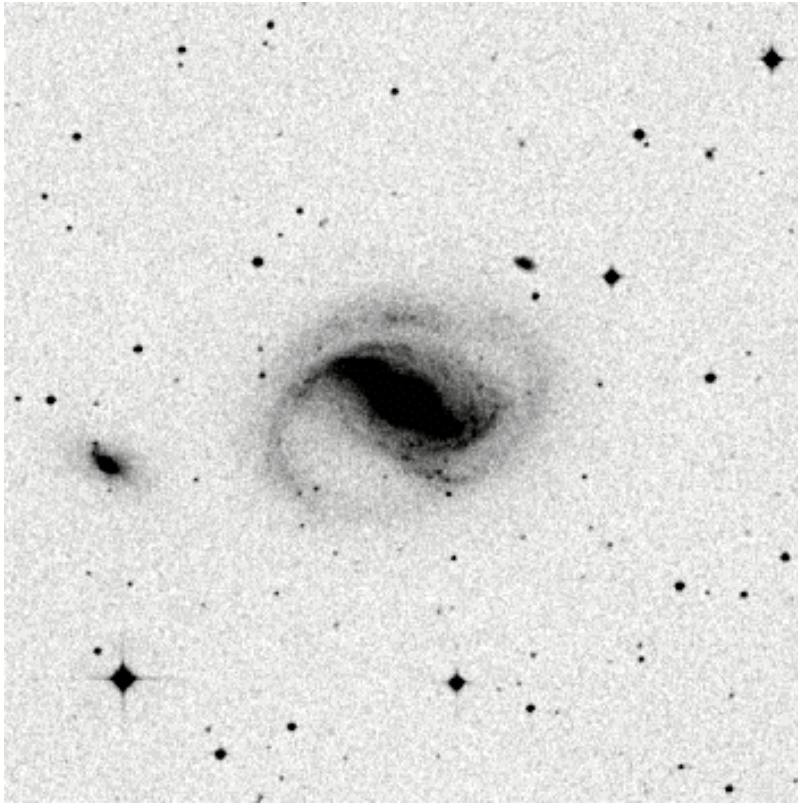
NGC 4151: Primary Target



- $\alpha_{2000} = 12:10:32.6$
- $\delta_{2000} = 39:24:21$
- 7×6 arcmin
- Type Sa/SBb
- Guidestar(s):

	X	Y
	5000	11000
<u>Better:</u>	14000	11000

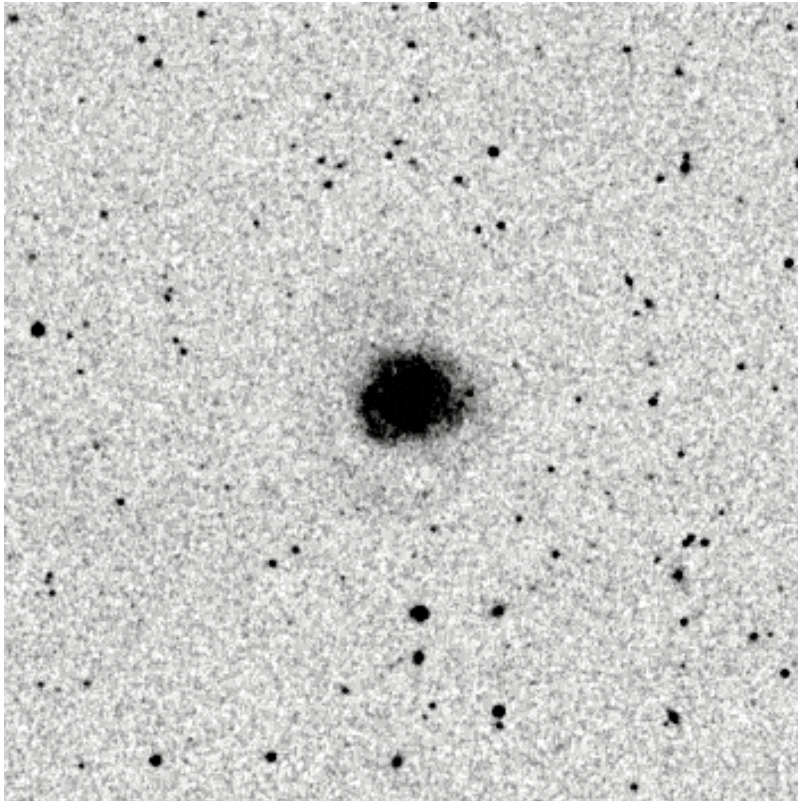
NGC 4593: Primary Target



- $\alpha_{2000} = 12:39:39.425$
- $\delta_{2000} = -05:20:39.34$
- Guidestar(s):

X	Y
11000	11000
19000	12000
25000	10000
10000	10000

NGC 5548: Secondary Target



- $\alpha_{2000} = 14:17:56.7$
- $\delta_{2000} = 25:08:12$
- Alt.: RA: 14:18:14.1
Dec: 25:10:39
- Guidestar(s):

	X	Y
	2000	11000
v. brght:	21500	11000
v. brght:	21000	9000
	14000	9000
	10000	8000
	7000	8000