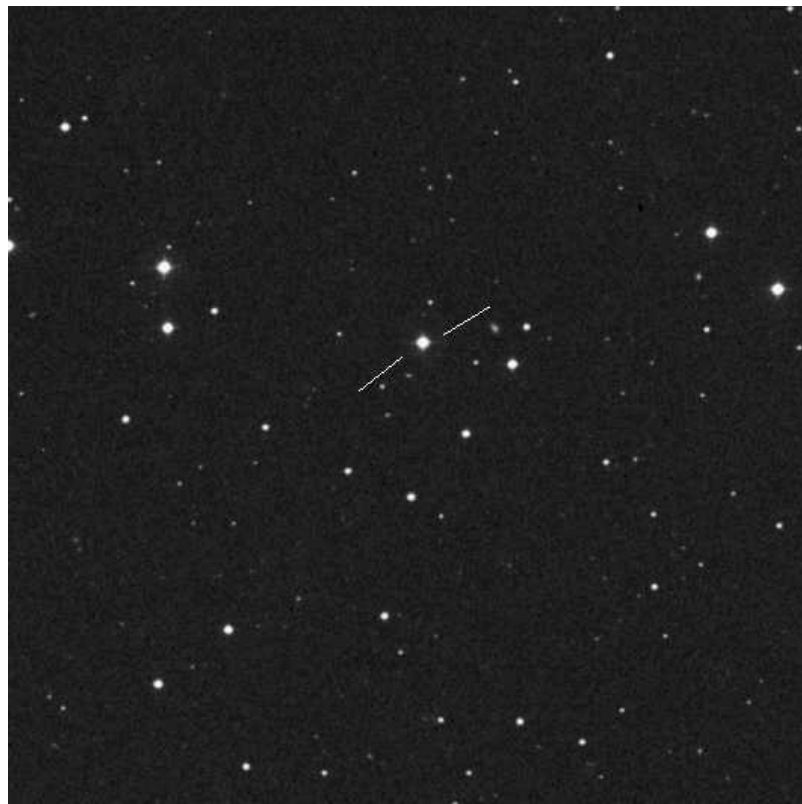


# Feige 34: Primary Standard

- $\alpha_{2000} = 10\ 39\ 36.71$
- $\delta_{2000} = +43\ 06\ 10.1$
- $V = 11.18$
- DO

Guidestar(s):

	X	Y
Bright:	<b>7000</b>	<b>11000</b>



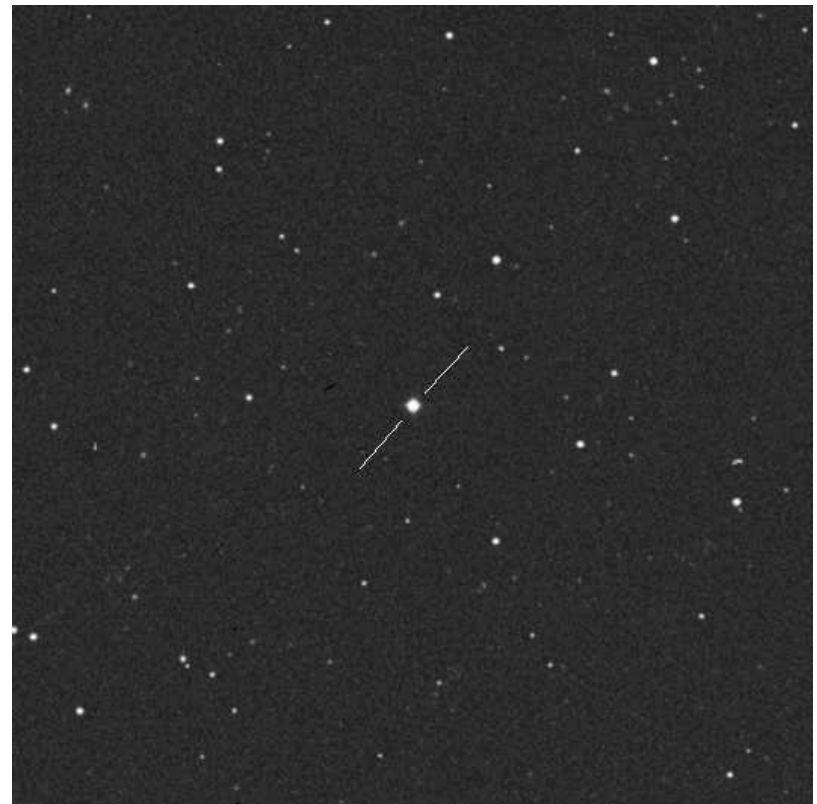
15' × 15'

# Feige 56: Primary Standard

- $\alpha_{2000} = 12\ 06\ 47.3$
- $\delta_{2000} = +11\ 40\ 13$
- $V = 11.06$
- B5p

Guidestar(s):

	X	Y
v. brght:	<b>6000</b>	<b>10000</b>
	<b>22000</b>	<b>9000</b>



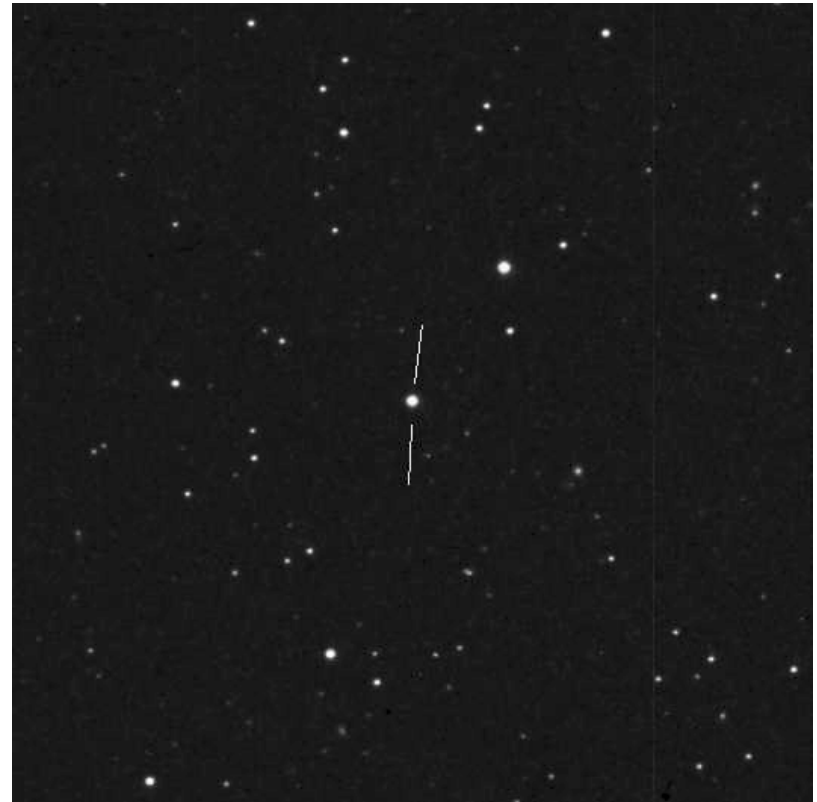
15' × 15'

# Feige 98: Primary Standard

- $\alpha_{2000} = 14\ 38\ 24$
- $\delta_{2000} = +27\ 31$
- $V = 11.8$
- B7

Guidestar(s):

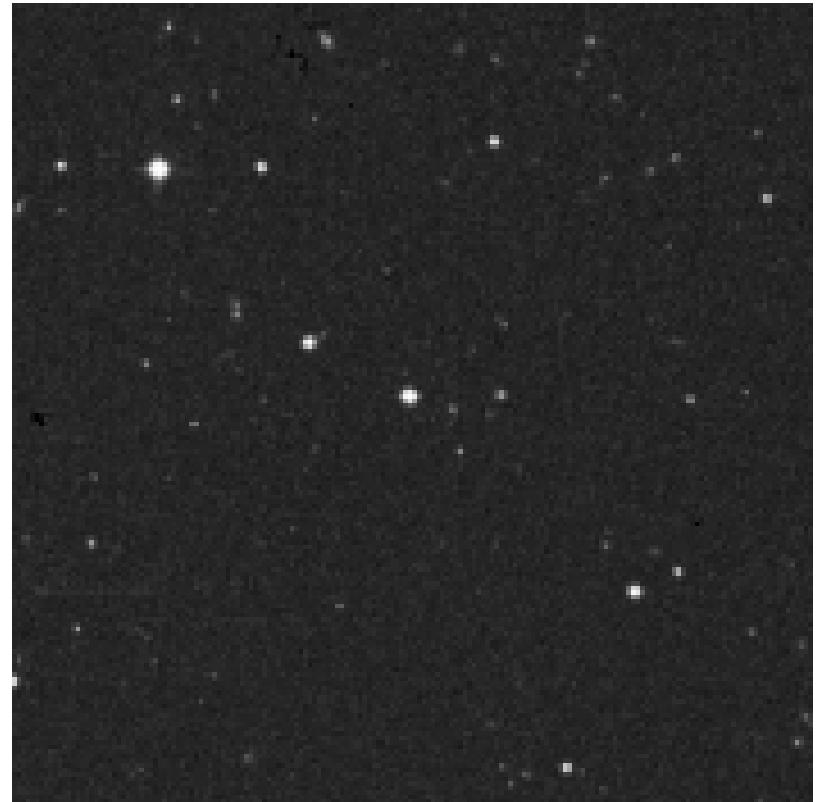
	X	Y
v. brght:	<b>5000</b>	<b>11000</b>
	<b>17000</b>	<b>11000</b>
	<b>2000</b>	<b>11000</b>
	<b>16000</b>	<b>8000</b>



15' × 15'

# HZ 43: Secondary Standard

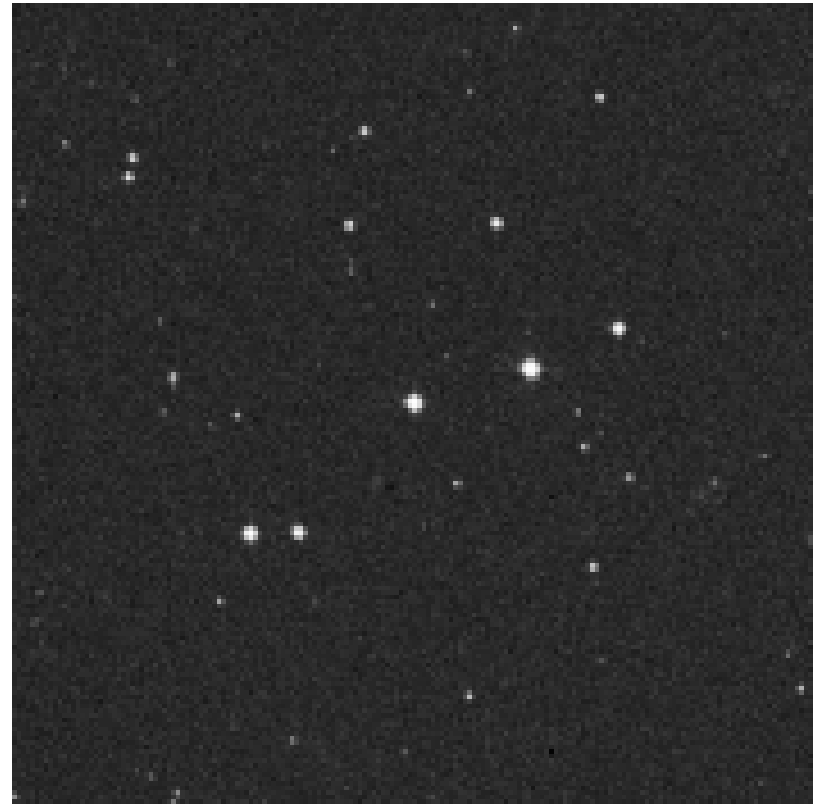
- $\alpha_{2000} = 13\ 16\ 21.99$
- $\delta_{2000} = +29\ 05\ 57.0$
- $V = 12.91$
- DA1



10' × 10'

# HZ 44: Secondary Standard

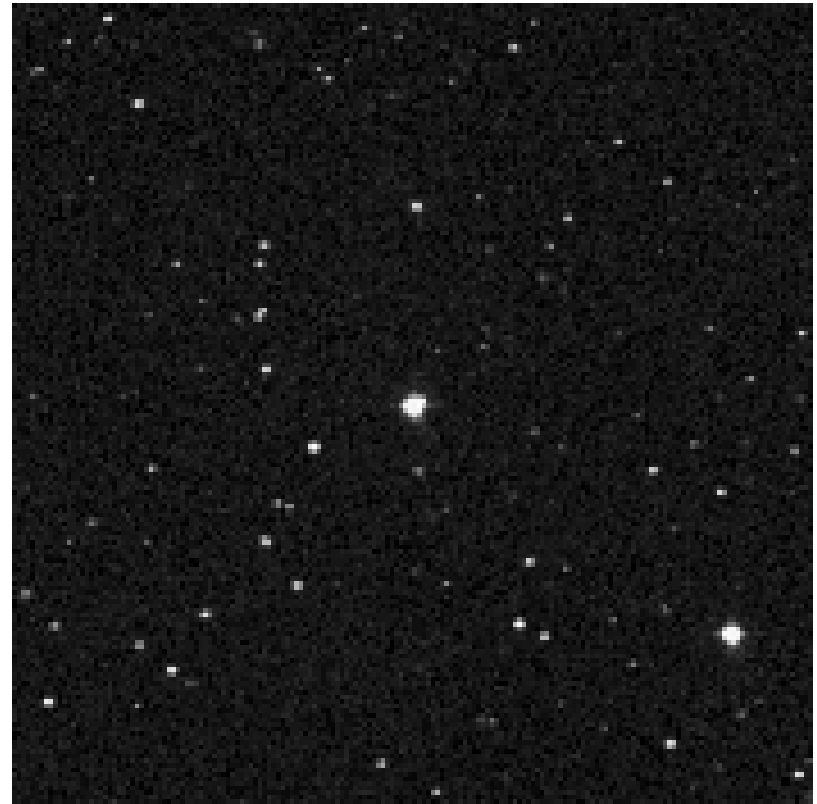
- $\alpha_{2000} = 13\ 23\ 35.37$
- $\delta_{2000} = +36\ 08\ 00.0$
- $V = 11.66$
- sdO



10' × 10'

# BD +33° 2642: Secondary Standard

- $\alpha_{2000} = 15\ 51\ 59.86$
- $\delta_{2000} = +32\ 56\ 54.8$
- $V = 10.81$
- B2IV



10' × 10'